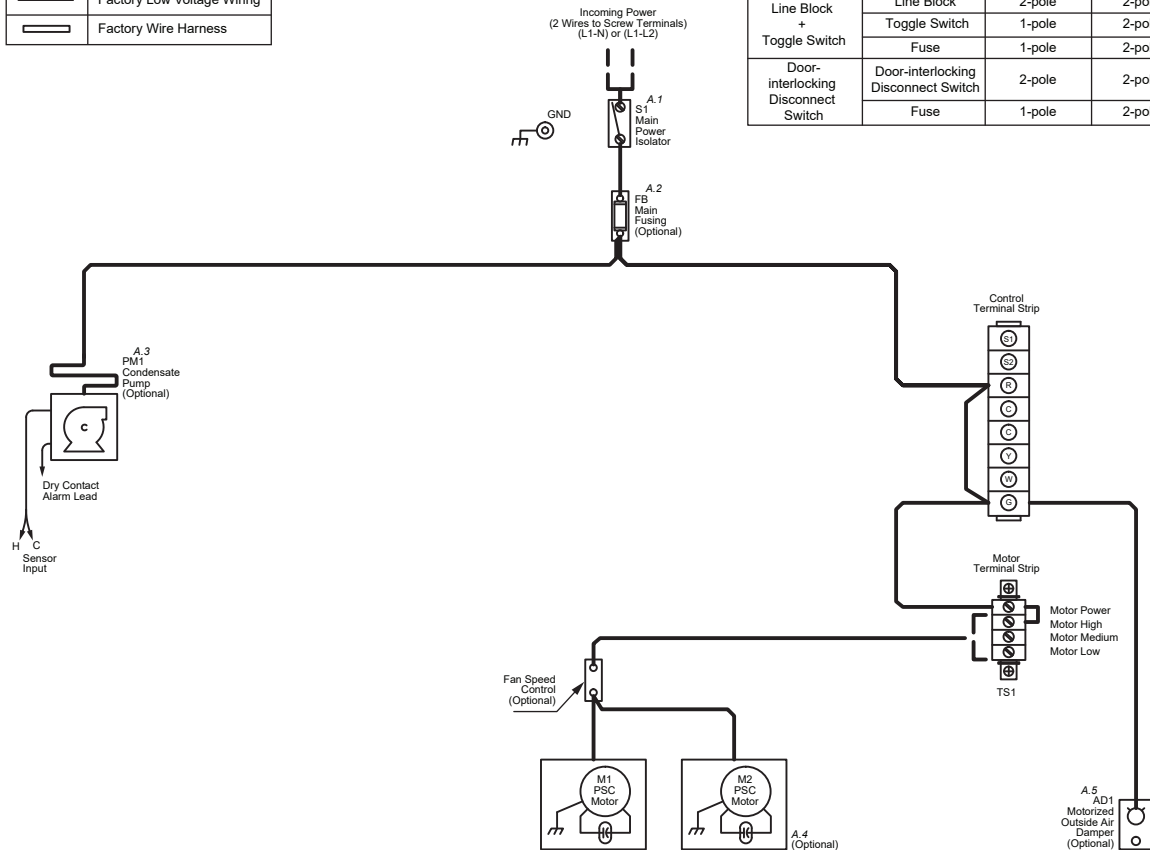
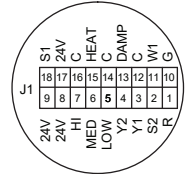


LEGEND	
	Field Line Voltage Wiring
	Field Low Voltage Wiring
	Factory Line Voltage Wiring
	Factory Low Voltage Wiring
	Factory Wire Harness

Unit Disconnect / Main Fusing		Line - Neutral (L1-N)	Line - Line (L1-L2)
		115v/220v/277v	208v/230v
Line Block Only	Line Block	2-pole	2-pole
	Fuse	1-pole	2-pole
Line Block + Toggle Switch	Line Block	2-pole	2-pole
	Toggle Switch	1-pole	2-pole
Door-interlocking Disconnect Switch	Door-interlocking Disconnect Switch	2-pole	2-pole
	Fuse	1-pole	2-pole

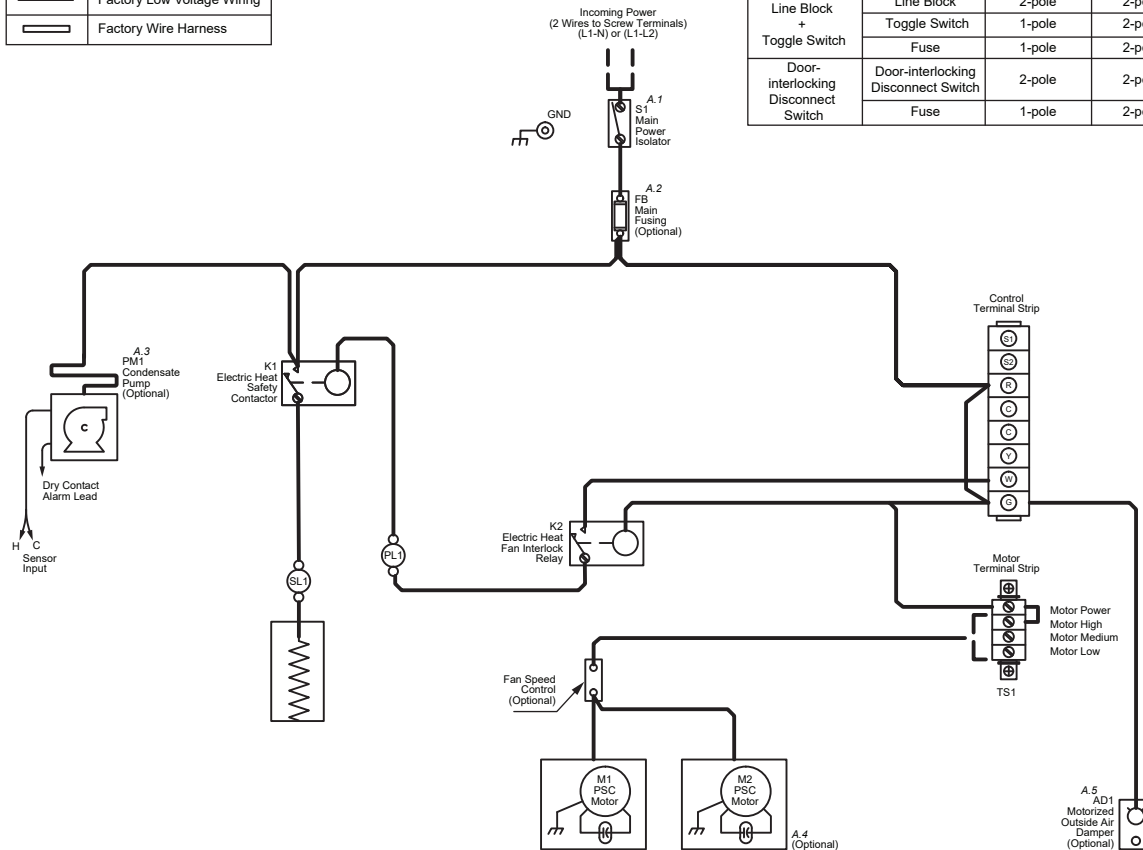
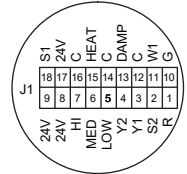


**NOTES:**

- A. Device ordering options
- Optional incoming power disconnect:
    - None (Line block only)
    - Toggle switch (Available only with non-EH)
    - Door interlocking disconnect switch
  - Optional main fusing
  - Optional condensate pump available on KHF\*-A, KHG\*-A for 115-230V only
  - 2nd motor depends on unit model/size
  - Optional motorized OA damper available on KHF\*-A, KVP and KVF only

LEGEND	
	Field Line Voltage Wiring
	Field Low Voltage Wiring
	Factory Line Voltage Wiring
	Factory Low Voltage Wiring
	Factory Wire Harness

Unit Disconnect / Main Fusing		Line - Neutral (L1-N)	Line - Line (L1-L2)
		115v/220v/277v	208v/230v
Line Block Only	Line Block	2-pole	2-pole
	Fuse	1-pole	2-pole
Line Block + Toggle Switch	Line Block	2-pole	2-pole
	Toggle Switch	1-pole	2-pole
Door-interlocking Disconnect Switch	Door-interlocking Disconnect Switch	2-pole	2-pole
	Fuse	1-pole	2-pole

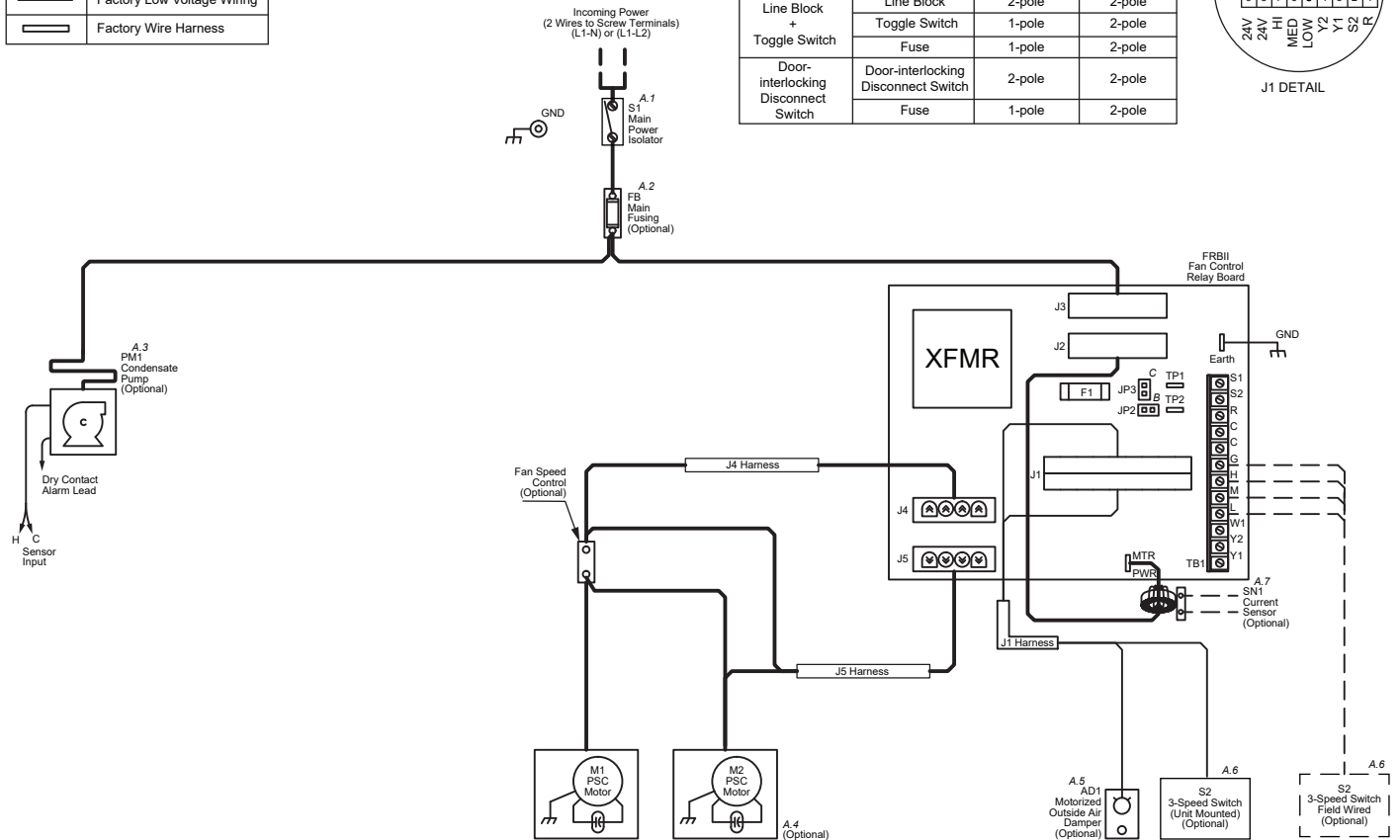
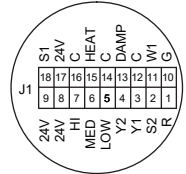


**NOTES:**

- A. Device ordering options
- Optional incoming power disconnect:
    - None (Line block only)
    - Toggle switch (Available only with non-EH)
    - Door interlocking disconnect switch
  - Optional main fusing
  - Optional condensate pump available on KHF\*-A, KHG\*-A for 115-230V only
  - 2nd motor depends on unit model/size
  - Optional motorized OA damper available on KHF\*-A, KVP and KVF only

LEGEND	
	Field Line Voltage Wiring
	Field Low Voltage Wiring
	Factory Line Voltage Wiring
	Factory Low Voltage Wiring
	Factory Wire Harness

Unit Disconnect / Main Fusing		Line - Neutral (L1-n)	Line - Line (L1-I2)
		115v/220v/277v	208v/230v
Line Block Only	Line Block	2-pole	2-pole
	Fuse	1-pole	2-pole
Line Block + Toggle Switch	Line Block	2-pole	2-pole
	Toggle Switch	1-pole	2-pole
Door-interlocking Disconnect Switch	Door-interlocking Disconnect Switch	2-pole	2-pole
	Fuse	1-pole	2-pole

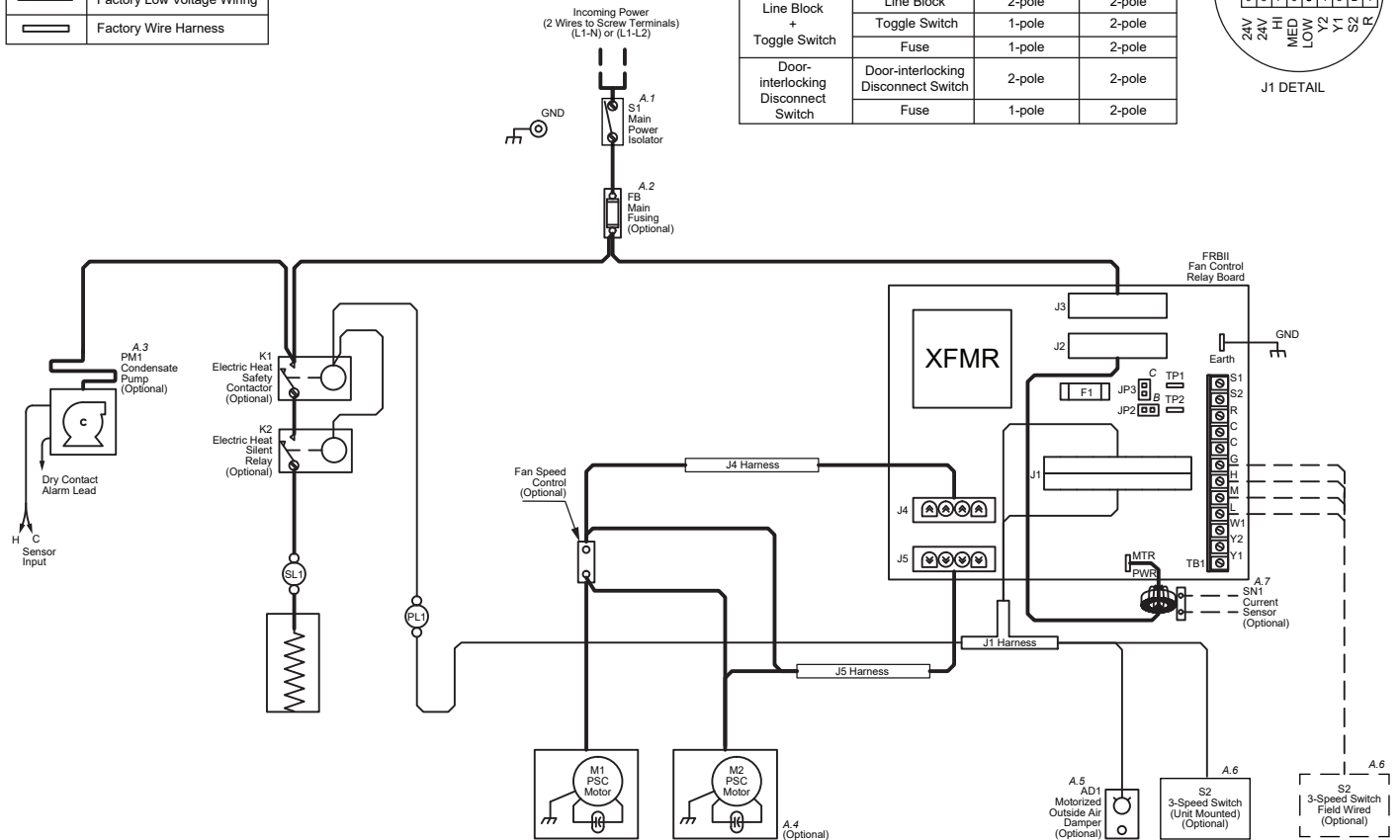
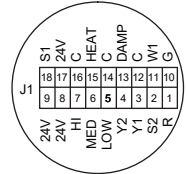


**NOTES:**

- A. Device ordering options
- Optional incoming power disconnect:
    - None (Line block only)
    - Toggle switch (Available only with non-EH)
    - Door interlocking disconnect switch
  - Optional main fusing
  - Optional condensate pump available on KHF\*-A, KHG\*-A for 115-230V only
  - 2nd motor depends on unit model/size
  - Optional motorized OA damper available on KHF\*-A, KVP and KVF only
  - Optional 3-speed switch (Remote/unit mounted)
  - Optional current sensor with PSC motors on KHF\*-A and KHG\*-A only
- B. JP2 position depends on optional float switch
- C. JP3 position depends on remote fan control through G terminal

LEGEND	
	Field Line Voltage Wiring
	Field Low Voltage Wiring
	Factory Line Voltage Wiring
	Factory Low Voltage Wiring
	Factory Wire Harness

Unit Disconnect / Main Fusing		Line - Neutral (L1-n)	Line - Line (L1-I2)
		115v/220v/277v	208v/230v
Line Block Only	Line Block	2-pole	2-pole
	Fuse	1-pole	2-pole
Line Block + Toggle Switch	Line Block	2-pole	2-pole
	Toggle Switch	1-pole	2-pole
Door-interlocking Disconnect Switch	Door-interlocking Disconnect Switch	2-pole	2-pole
	Fuse	1-pole	2-pole

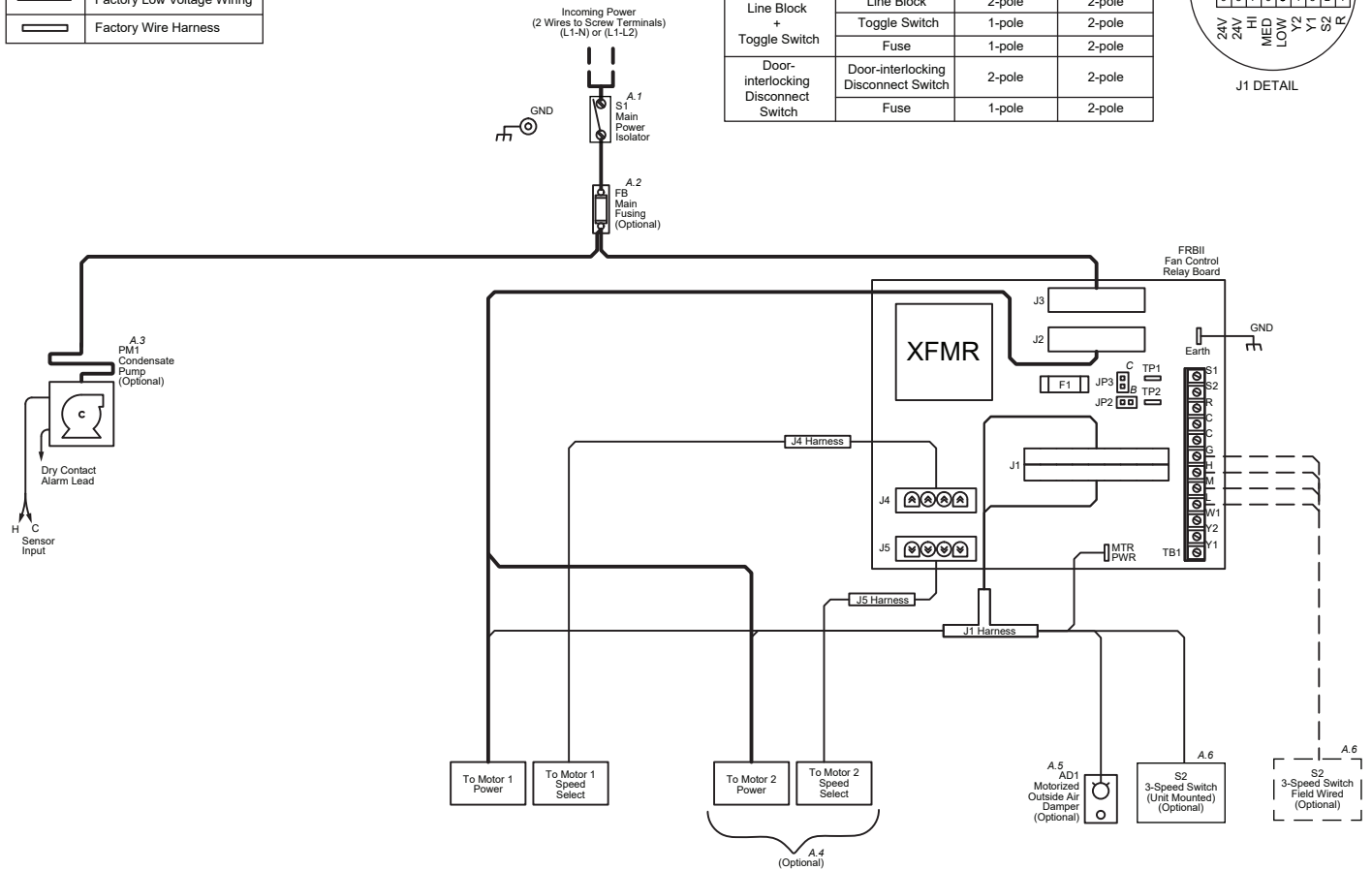
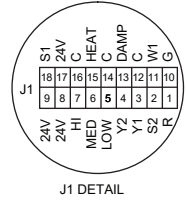


**NOTES:**

- A. Device ordering options
  1. Optional incoming power disconnect:
    - None (Line block only)
    - Toggle switch (Available only with non-EH)
    - Door interlocking disconnect switch
  2. Optional main fusing
  3. Optional condensate pump available on KHF\*-A, KHG\*-A for 115-230V only
  4. 2nd motor depends on unit model/size
  5. Optional motorized OA damper available on KHF\*-A, KVP and KVF only
  6. Optional 3-speed switch (Remote/unit mounted)
  7. Optional current sensor with PSC motors on KHF\*-A and KHG\*-A only
- B. JP2 position depends on optional float switch
- C. JP3 position depends on remote fan control through G terminal

LEGEND	
	Field Line Voltage Wiring
	Field Low Voltage Wiring
	Factory Line Voltage Wiring
	Factory Low Voltage Wiring
	Factory Wire Harness

Unit Disconnect / Main Fusing	Line - Neutral (L1-n)	Line - Line (L1-L2)
		115v/220v/277v
Line Block Only	Line Block	2-pole
	Fuse	1-pole
Line Block + Toggle Switch	Line Block	2-pole
	Toggle Switch	1-pole
Door-interlocking Disconnect Switch	Door-interlocking Disconnect Switch	2-pole
	Fuse	1-pole

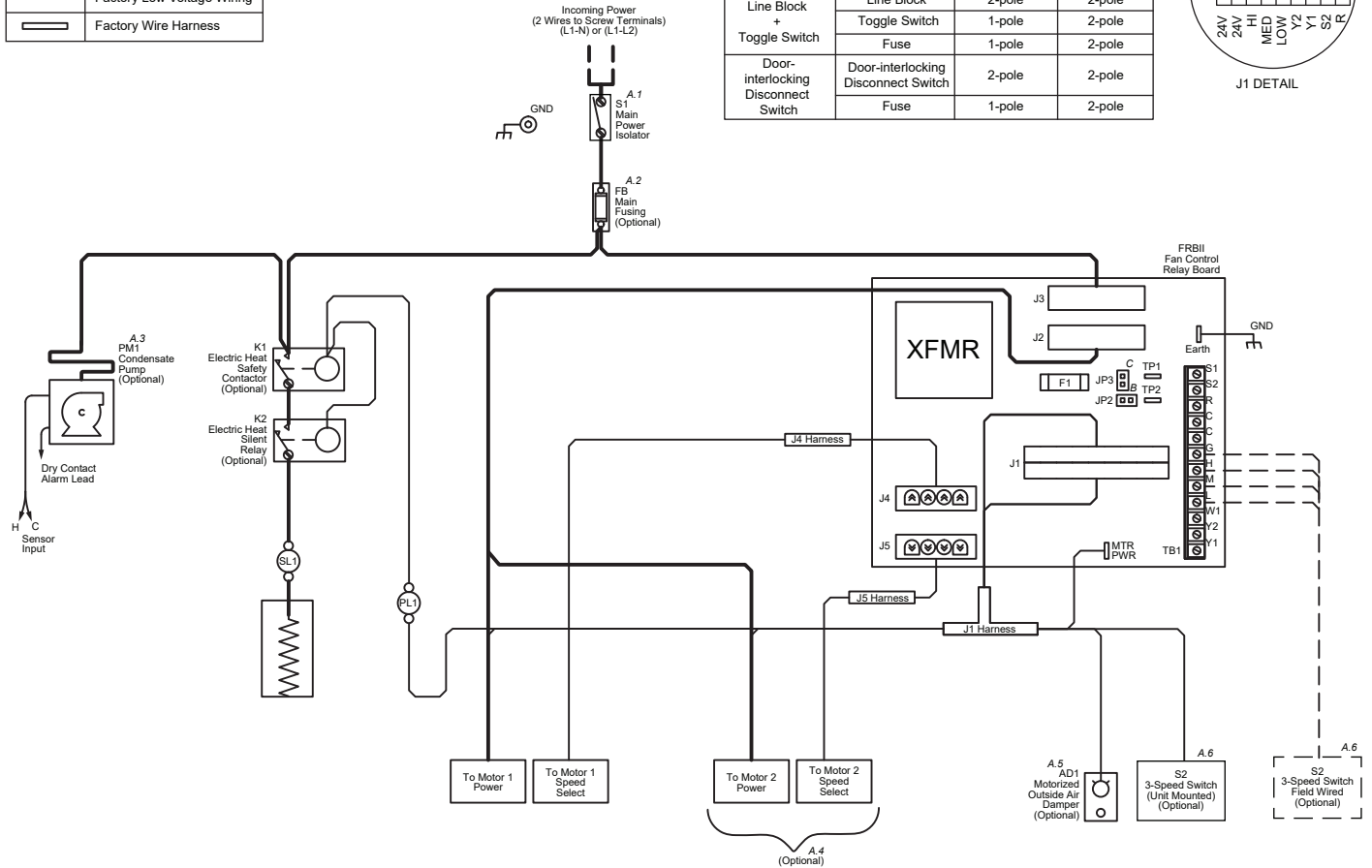
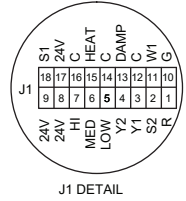


**NOTES:**

- A. Device ordering options
- Optional incoming power disconnect:
    - None (Line block only)
    - Toggle switch (Available only with non-EH)
    - Door interlocking disconnect switch
  - Optional main fusing
  - Optional condensate pump available on KHF\*-A, KHG\*-A for 115-230V only
  - 2nd motor depends on unit model/size
  - Optional motorized OA damper available on KHF\*-A, KVP and KVF only
  - Optional 3-speed switch (Remote/unit mounted)
- B. JP2 position depends on optional float switch
- C. JP3 position depends on remote fan control through G terminal

LEGEND	
	Field Line Voltage Wiring
	Field Low Voltage Wiring
	Factory Line Voltage Wiring
	Factory Low Voltage Wiring
	Factory Wire Harness

Unit Disconnect / Main Fusing	Line - Neutral (L1-n)	Line - Line (L1-L2)
		115v/220v/277v
Line Block Only	Line Block	2-pole
	Fuse	1-pole
Line Block + Toggle Switch	Line Block	2-pole
	Toggle Switch	1-pole
Door-interlocking Disconnect Switch	Door-interlocking Disconnect Switch	2-pole
	Fuse	1-pole

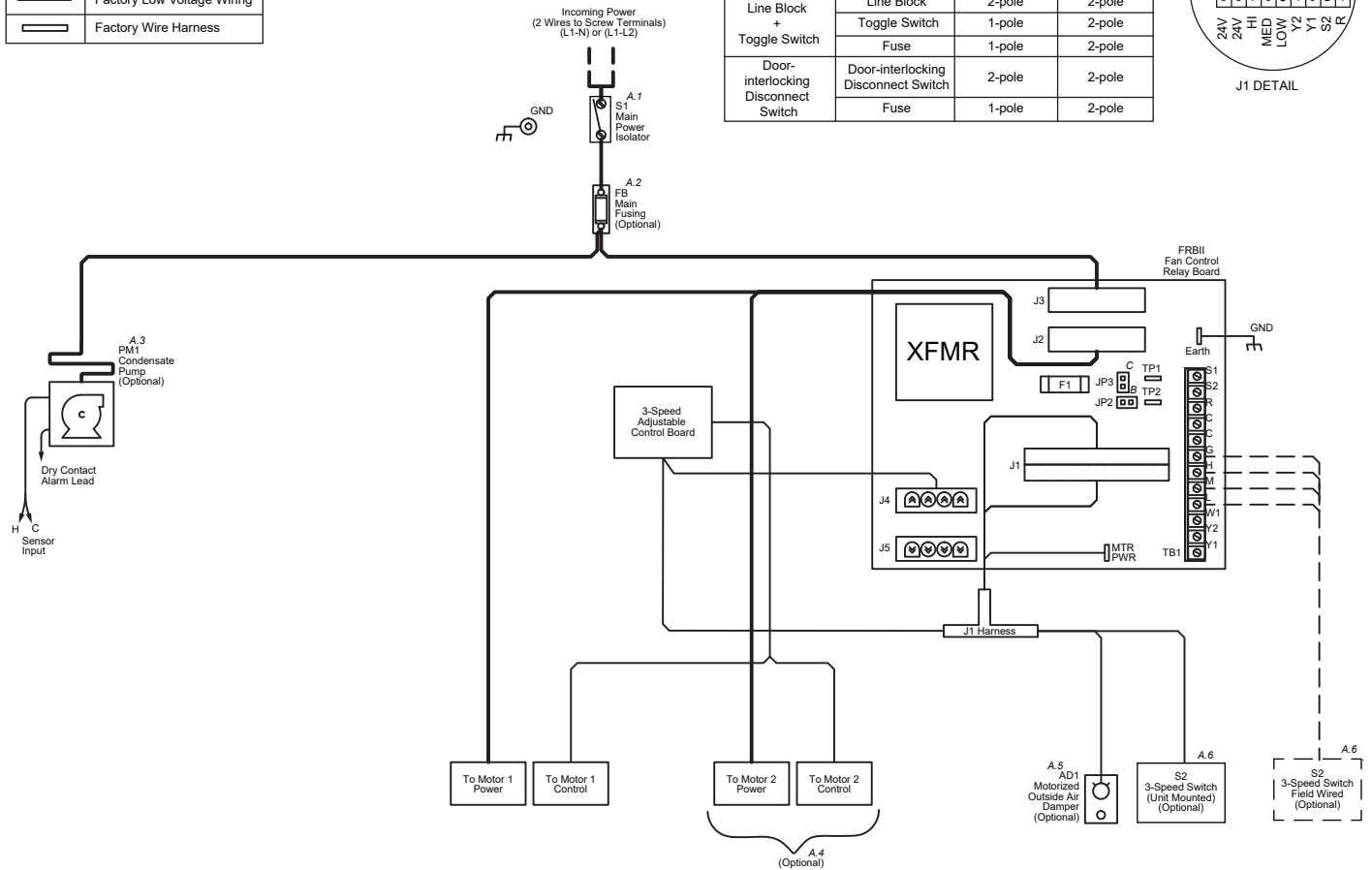
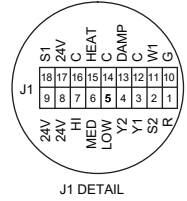


**NOTES:**

- A. Device ordering options
- Optional incoming power disconnect:
    - None (Line block only)
    - Toggle switch (Available only with non-EH)
    - Door interlocking disconnect switch
  - Optional main fusing
  - Optional condensate pump available on KHF\*-A, KHG\*-A for 115-230V only
  - 2nd motor depends on unit model/size
  - Optional motorized OA damper available on KHF\*-A, KVP and KVF only
  - Optional 3-speed switch (Remote/unit mounted)
- B. JP2 position depends on optional float switch
- C. JP3 position depends on remote fan control through G terminal

LEGEND	
	Field Line Voltage Wiring
	Field Low Voltage Wiring
	Factory Line Voltage Wiring
	Factory Low Voltage Wiring
	Factory Wire Harness

Unit Disconnect / Main Fusing		Line - Neutral (L1-n)	Line - Line (L1-I2)
		115v/220v/277v	208v/230v
Line Block Only	Line Block	2-pole	2-pole
	Fuse	1-pole	2-pole
Line Block + Toggle Switch	Line Block	2-pole	2-pole
	Toggle Switch	1-pole	2-pole
Door-interlocking Disconnect Switch	Door-interlocking Disconnect Switch	2-pole	2-pole
	Fuse	1-pole	2-pole

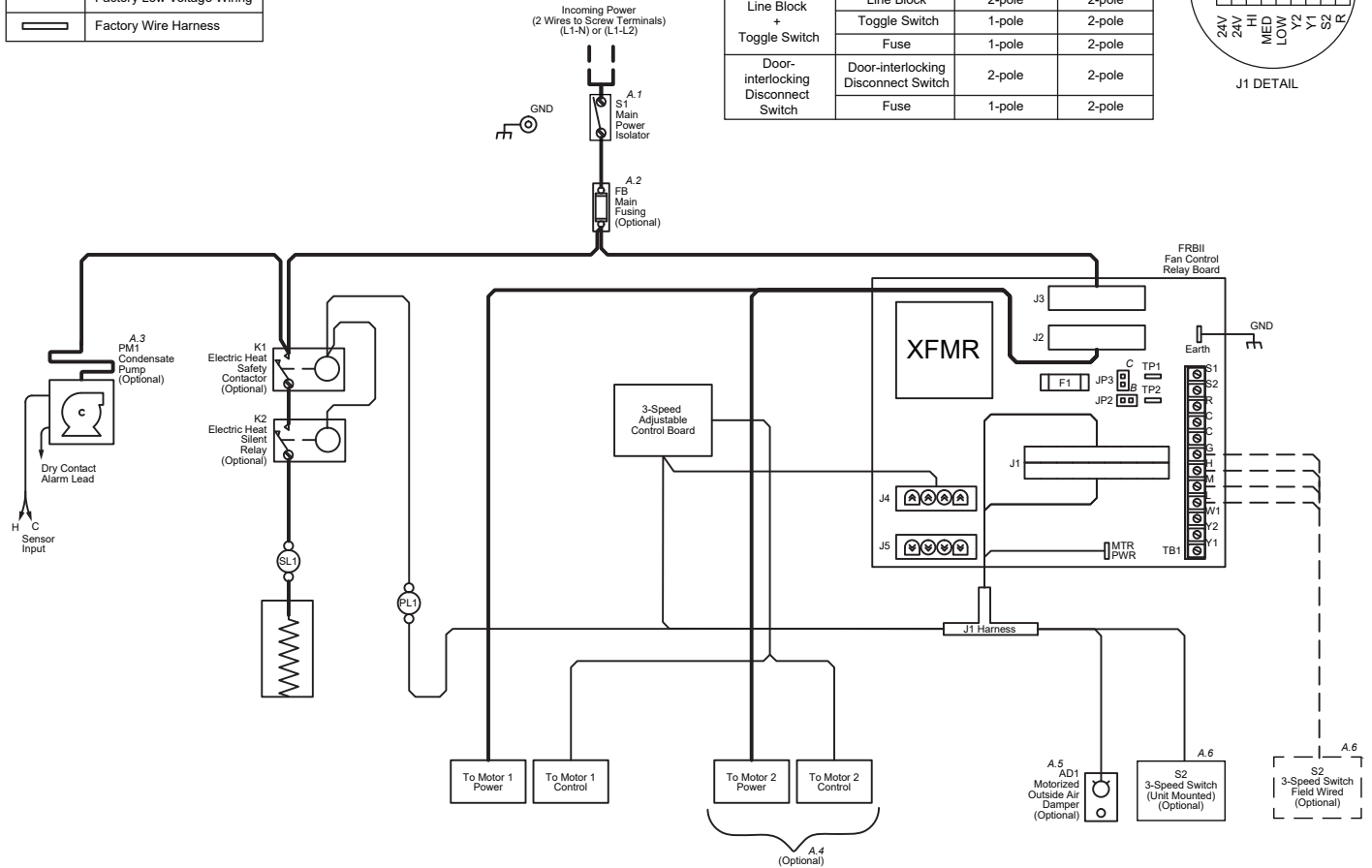
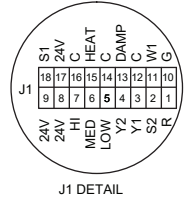


#### NOTES:

- A. Device ordering options
- Optional incoming power disconnect:
    - None (Line block only)
    - Toggle switch (Available only with non-EH)
    - Door interlocking disconnect switch
  - Optional main fusing
  - Optional condensate pump available on KHF\*-A, KHG\*-A for 115-230V only
  - 2nd motor depends on unit model/size
  - Optional motorized OA damper available on KHF\*-A, KVP and KVF only
  - Optional 3-speed switch (Remote/unit mounted)
- B. JP2 position depends on optional float switch
- C. JP3 position depends on remote fan control through G terminal

LEGEND	
	Field Line Voltage Wiring
	Field Low Voltage Wiring
	Factory Line Voltage Wiring
	Factory Low Voltage Wiring
	Factory Wire Harness

Unit Disconnect / Main Fusing		Line - Neutral (L1-n)	Line - Line (L1-L2)
		115v/220v/277v	208v/230v
Line Block Only	Line Block	2-pole	2-pole
	Fuse	1-pole	2-pole
Line Block + Toggle Switch	Line Block	2-pole	2-pole
	Toggle Switch	1-pole	2-pole
Door-interlocking Disconnect Switch	Door-interlocking Disconnect Switch	2-pole	2-pole
	Fuse	1-pole	2-pole



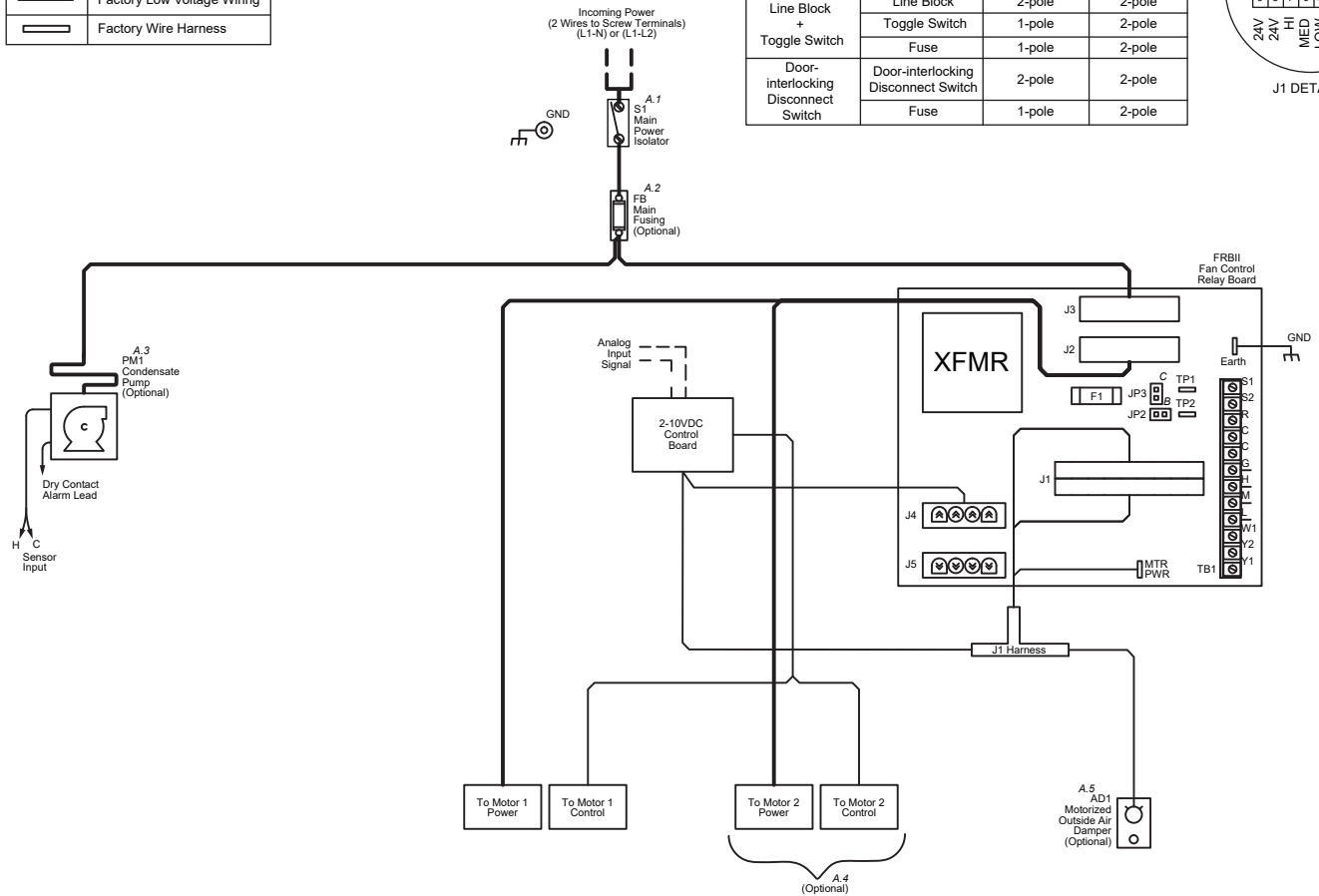
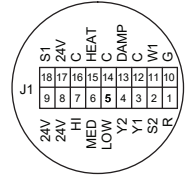
**NOTES:**

- A. Device ordering options
- Optional incoming power disconnect:
    - None (Line block only)
    - Toggle switch (Available only with non-EH)
    - Door interlocking disconnect switch
  - Optional main fusing
  - Optional condensate pump available on KHF\*-A, KHG\*-A for 115-230V only
  - 2nd motor depends on unit model/size
  - Optional motorized OA damper available on KHF\*-A, KVP and KVF only
  - Optional 3-speed switch (Remote/unit mounted)
- B. JP2 position depends on optional float switch
- C. JP3 position depends on remote fan control through G terminal



LEGEND	
	Field Line Voltage Wiring
	Field Low Voltage Wiring
	Factory Line Voltage Wiring
	Factory Low Voltage Wiring
	Factory Wire Harness

Unit Disconnect / Main Fusing	Line - Neutral (L1-n)	Line - Line (L1-I2)	
		115v/220v/277v	208v/230v
Line Block Only	Line Block	2-pole	2-pole
	Fuse	1-pole	2-pole
Line Block + Toggle Switch	Line Block	2-pole	2-pole
	Toggle Switch	1-pole	2-pole
Door-interlocking Disconnect Switch	Door-interlocking Disconnect Switch	2-pole	2-pole
	Fuse	1-pole	2-pole

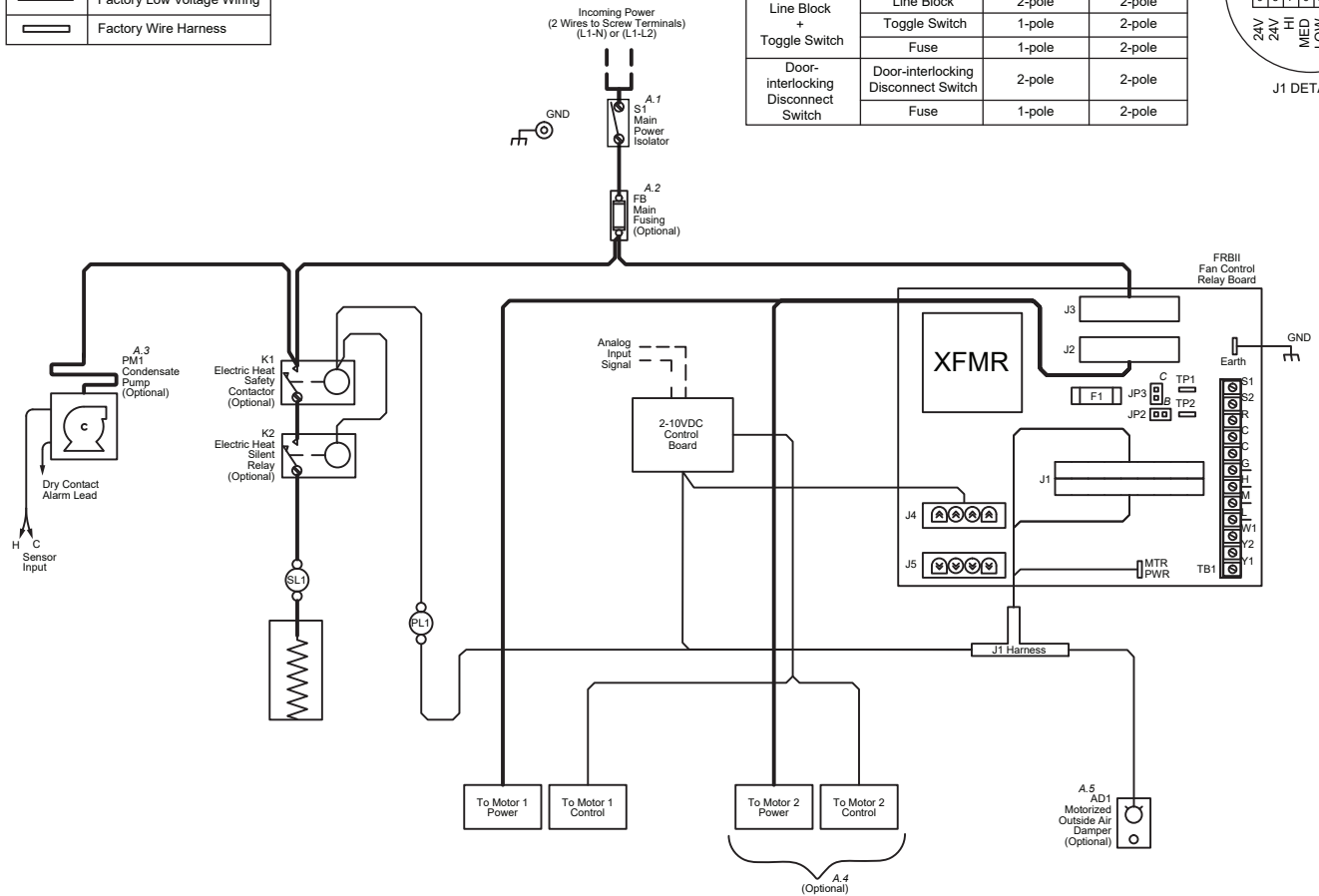
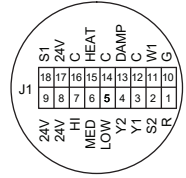


**NOTES:**

- A. Device ordering options
- Optional incoming power disconnect:
    - None (Line block only)
    - Toggle switch (Available only with non-EH)
    - Door interlocking disconnect switch
  - Optional main fusing
  - Optional condensate pump available on KHF\*-A, KHG\*-A for 115-230V only
  - 2nd motor depends on unit model/size
  - Optional motorized OA damper available on KHF\*-A, KVP and KVF only
  - Optional 3-speed switch (Remote/unit mounted)
- B. JP2 position depends on optional float switch
- C. JP3 position depends on remote fan control through G terminal

LEGEND	
	Field Line Voltage Wiring
	Field Low Voltage Wiring
	Factory Line Voltage Wiring
	Factory Low Voltage Wiring
	Factory Wire Harness

Unit Disconnect / Main Fusing	Line - Neutral (L1-n)	Line - Line (L1-I2)	
		115v/220v/277v	208v/230v
Line Block Only	Line Block	2-pole	2-pole
	Fuse	1-pole	2-pole
Line Block + Toggle Switch	Line Block	2-pole	2-pole
	Toggle Switch	1-pole	2-pole
Door-interlocking Disconnect Switch	Door-interlocking Disconnect Switch	2-pole	2-pole
	Fuse	1-pole	2-pole



**NOTES:**

- A. Device ordering options
- Optional incoming power disconnect:
    - None (Line block only)
    - Toggle switch (Available only with non-EH)
    - Door interlocking disconnect switch
  - Optional main fusing
  - Optional condensate pump available on KHF\*-A, KHG\*-A for 115-230V only
  - 2nd motor depends on unit model/size
  - Optional motorized OA damper available on KHF\*-A, KVP and KVF only
  - Optional 3-speed switch (Remote/unit mounted)
- B. JP2 position depends on optional float switch
- C. JP3 position depends on remote fan control through G terminal