

**MODEL**

- KHGE - SERIES A- Horizontal high performance fan coil unit, exposed cabinet

**FEATURES**

- Galvanized steel construction
- 1/2" thick fiberglass, foil faced, cellular insulation
- 1 1/2" duct discharge collar
- Four point hanger mounting brackets
- Integral filter rack with 1" throwaway or MERV8 filter
- Bottom or rear return (optional)

**COILS**

- Cooling - chilled water or DX (3, 4 or 6-row), heat pump compatible
- Heating - hot water (1, 2, 3 or 4-row) or steam (1 or 2-row), reheat or preheat position
- 8 total rows of cooling and heating coils maximum
- 3/8" O.D. seamless copper tubes (0.012" tube wall thickness)
- 1/2" O.D. seamless copper tubes (0.016" or 0.025" tube wall thickness)
- Stainless steel coil casing (optional)
- High efficiency aluminum fin surface
- Left or right hand coil connections
- Manual air vents
- Automatic air vents (optional)

**DRAIN PANS**

- Single wall, galvanized steel, externally insulated – fire retardant and antimicrobial closed cell foam
- Positively sloped to drain connection
- Condensate overflow switch (optional)
- Auxiliary drain pan galvanized or stainless steel (optional)
- 7/8" ODM copper outlet primary drain pan; stainless steel drain pan has 3/4" MPT galvanized steel outlet
- 5/8" ODM copper auxiliary drain outlet; stainless steel pan is 3/8" MPT galvanized steel

**FAN/MOTOR ASSEMBLIES**

- Forwardly curved, DWDI centrifugal type
- 115, 208-230, 220 & 277V, 1-phase, 3-speed PSC motors
- 115, 208-230, 220 & 277V, 1-phase EC motors in one of three options (3-speed fixed, adjustable, and 2-10V control)
- Quick disconnect motor connections
- Removable fan/motor deck for service

**ELECTRICAL**

- Electrical junction box for field wiring terminations
- Terminal block for field connections
- Unit and remote mounted three speed fan switches (optional)
- Side access electrical enclosure
- SCR fan speed controller, only for high speed (optional)
- Main fusing (optional)
- Disconnect switch, toggle, or door interlocking (optional)
- Silent electric heat relays and fan relay (optional)

**PIPING PACKAGES**

- Factory assembled, shipped loose or pre-installed
- 1/2", 3/4", and 1" piping size
- 2-way and 3-way 2 position close off, modulating floating point and proportional valves
- Isolation ball valves with memory stop
- Fixed and adjustable flow control devices (optional)
- Unions and P/T ports (optional)
- Remote mounted digital display and programmable thermostats

**CERTIFICATIONS**

- cETL Listed Electric Heat Units - Adherence to UL/ANSI Standard 1995
- AHRI 440 certified performance data

# KHGE - SERIES A

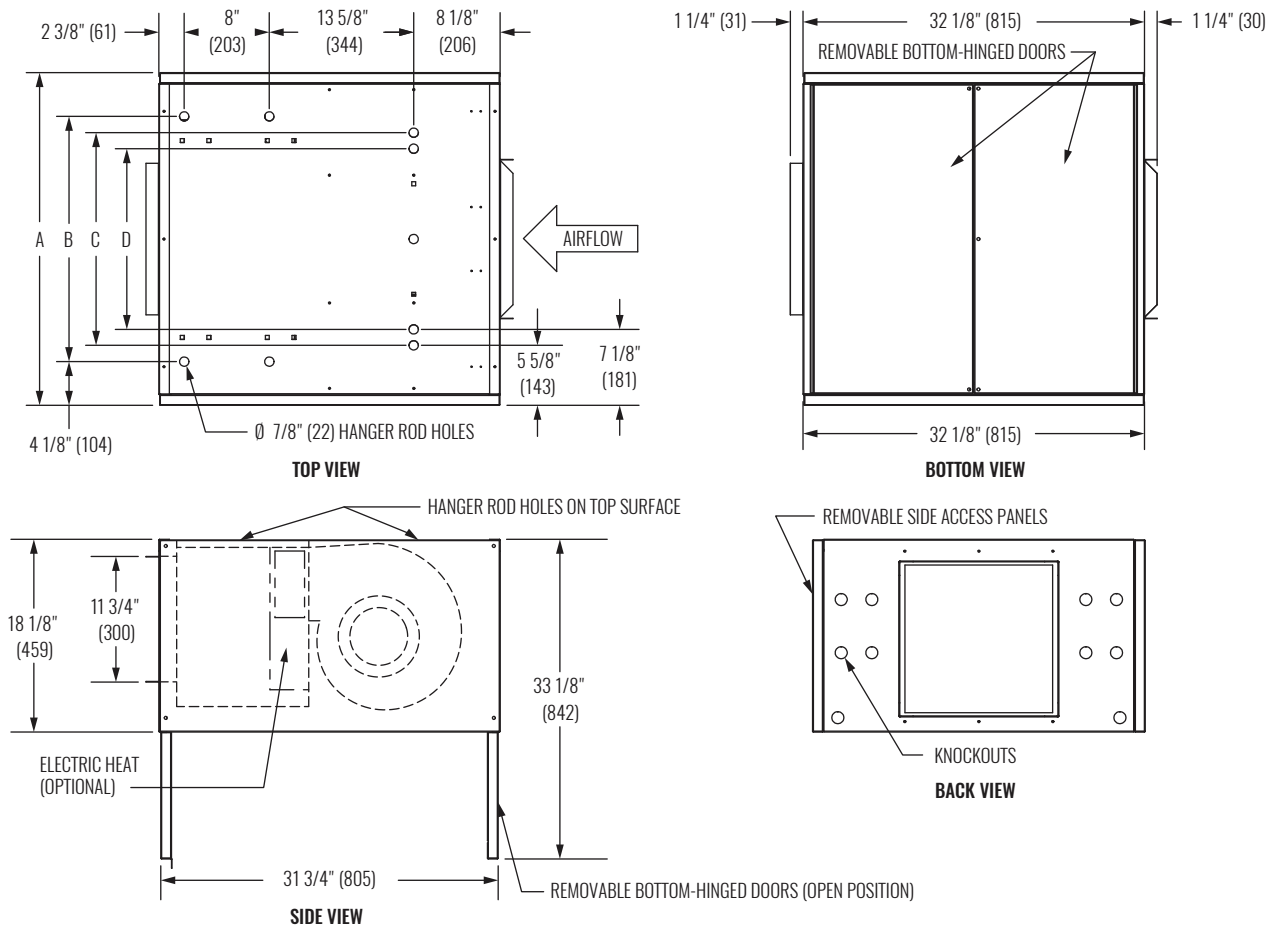
Horizontal High Performance Fan Coil Unit, Exposed Cabinet



FAN COIL UNITS

KHGE

## DIMENSIONAL DATA



NOTE: Provide access clearance for electrical enclosure per local and national electrical code requirements. Dimensions in parentheses are in millimeters (mm). See table below for dimensional references.

## PERFORMANCE AND DIMENSIONAL DATA

| SIZE | PERFORMANCE |             |                                    | DIMENSIONS                   |            |            |            |                |
|------|-------------|-------------|------------------------------------|------------------------------|------------|------------|------------|----------------|
|      | UNIT SIZE   | CFM RANGE   | TOTAL COOLING CAPACITY RANGE (MBH) | HEATING CAPACITY RANGE (MBH) | A          | B          | C          | D              |
| 06   | 643 - 690   | 5.1 - 20.8  | 22 - 46.5                          | 31 1/4" (886)                | 23" (584)  | 20" (508)  | 17" (432)  | 37 1/4" (946)  |
| 08   | 872 - 957   | 7.0 - 27.9  | 30.5 - 64.5                        | 36 1/4" (921)                | 28" (711)  | 25" (635)  | 22" (559)  | 42 1/4" (1073) |
| 10   | 903 - 994   | 17.2 - 31.6 | 35.0 - 71.6                        | 40 1/4" (1022)               | 32" (813)  | 29" (737)  | 26" (660)  | 46 1/4" (1174) |
| 12   | 1357 - 1488 | 22.9 - 44.5 | 48.5 - 97.5                        | 45 1/4" (1149)               | 37" (940)  | 34" (864)  | 31" (787)  | 51 1/4" (1302) |
| 14   | 1684 - 1800 | 12.1 - 49.9 | 57.6 - 116.9                       | 50 1/4" (1276)               | 42" (1067) | 39" (991)  | 36" (914)  | 56 1/4" (1428) |
| 16   | 1842 - 2056 | 13.9 - 60.8 | 65.5 - 134.3                       | 55 1/4" (1403)               | 47" (1194) | 44" (1118) | 41" (1041) | 61 1/4" (1556) |
| 18   | 1849 - 2085 | 32.4 - 61.5 | 70.0 - 141.8                       | 60 1/4" (1530)               | 52" (1321) | 49" (1245) | 46" (1168) | 66 1/4" (1683) |
| 20   | 1957 - 2086 | 36.2 - 32.9 | 83.9 - 148.6                       | 64 1/4" (1632)               | 56" (1422) | 53" (1346) | 50" (1270) | 70 1/4" (1784) |

NOTES: Information shown is abbreviated. See website for complete information. Data is based on 115/1/60 adjustable speed EC motor on high fan speed with 0.05" ESP. Cooling coil: 75°F DB and 63°F WB EAT, 45°F EWT, 55°F LWT. Heating coil: 70°F DB EAT, 180°F EWT, 160°F LWT. CFM and coil performance ranges will vary depending on coil combination selected.

© Copyright Krueger 2018