

MODEL

- EG5 - 1/2"x1/2"x1/2" aluminum cube core return grille, channel frame or core only
- EG10 - 1"x1"x1" aluminum cube core return grille, channel frame or core only
- EG15 - 1/2"x1/2"x1" aluminum cube core return grille, channel frame or core only

FEATURES

- Aluminum construction

GRILLE SIZES

- Width: 6" - 48" (1" increments)
- Height: 4" - 48" (1" increments)

FRAME STYLES

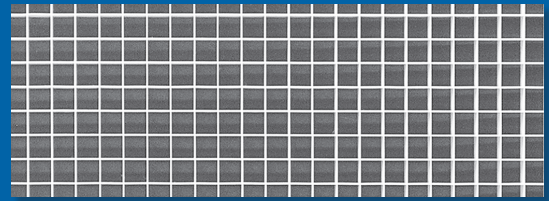
- F23 - Lay-in T-bar (core only) ¹
- FTB - Channel frame for lay-in T-bar ²

PANEL SIZES

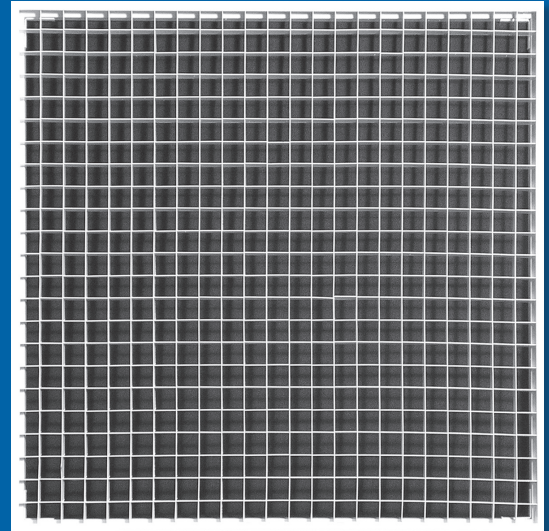
- 12"x12"
- 24"x12"
- 24"x24"
- 48"x12"
- 48"x24"

NOTES:

- ¹ F23 is loose core only with no frame. WxH must match panel size.
- ² FTB channel frame not available with panel.



EG5, FRAME 23



EG10, FRAME FTB

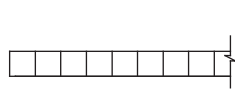


EG5 / EG10 / EG15

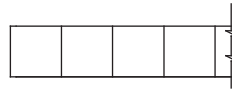
Return Grille, Egg Crate Core



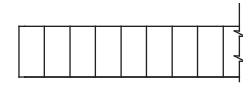
DIMENSIONAL DATA



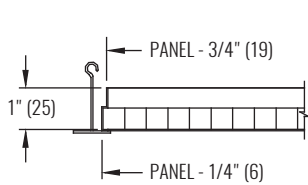
EG5 FRAME 23, LAY-IN T-BAR
1/2" x 1/2" x 1/2"
(13 x 13 x 13)



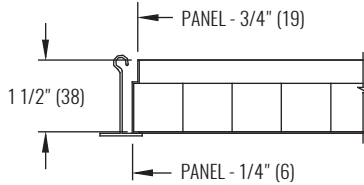
EG10 FRAME 23, LAY-IN T-BAR
1" x 1" x 1"
(25 x 25 x 25)



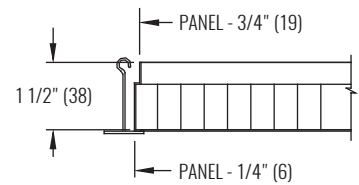
EG15 FRAME 23, LAY-IN T-BAR
1/2" x 1/2" x 1"
(13 x 13 x 25)



EG5 FRAME FTB, CHANNEL FRAME



EG10 FRAME FTB, CHANNEL FRAME



EG15 FRAME FTB, CHANNEL FRAME

NOTES: Dimensions in parentheses are millimeters (mm).

PERFORMANCE DATA

SIZE	PERFORMANCE		SIZE	PERFORMANCE		SIZE	PERFORMANCE	
NOMINAL	NC (< 25)	NC (25 - 40)	NOMINAL	NC (< 25)	NC (25 - 40)	NOMINAL	NC (< 25)	NC (25 - 40)
	CFM	CFM		CFM	CFM		CFM	CFM
MODEL: EG5			MODEL: EG10			MODEL: EG15		
6"x6"	100 - 225	256 - 350	6"x6"	75 - 188	216 - 300	6"x6"	100 - 225	256 - 350
8"x8"	150 - 375	431 - 600	8"x8"	150 - 375	431 - 600	8"x8"	150 - 375	431 - 600
10"x10"	200 - 550	638 - 900	10"x10"	250 - 575	656 - 900	10"x10"	250 - 575	656 - 900
12"x12"	300 - 775	894 - 1250	12"x6"	200 - 425	481 - 650	10"x22"	500 - 1150	1313 - 1800
14"x14"	400 - 1025	1181 - 1650	12"x12"	350 - 800	913 - 1250	12"x12"	350 - 800	913 - 1250
16"x16"	500 - 1300	1500 - 2100	14"x14"	450 - 800	914 - 1257	14"x14"	450 - 1050	1200 - 1650
18"x18"	600 - 1600	1850 - 2600	16"x16"	600 - 1350	1538 - 2100	16"x16"	600 - 1350	1538 - 2100
20"x20"	800 - 1950	2238 - 3100	20"x20"	900 - 2000	2275 - 3100	20"x8"	400 - 875	994 - 1350
22"x10"	450 - 1125	1294 - 1800	22"x10"	500 - 1150	1313 - 1800	20"x20"	925 - 2013	2284 - 3100
22"x22"	900 - 2300	2650 - 3700	22"x22"	1000 - 2350	2688 - 3700	22"x10"	500 - 1150	1313 - 1800
24"x12"	600 - 1450	1663 - 2300	24"x24"	1200 - 2750	3138 - 4300	22"x22"	1000 - 2350	2688 - 3700
24"x24"	1100 - 2700	3100 - 4300	30"x30"	1800 - 4150	4738 - 6500	24"x24"	1200 - 2750	3138 - 4300

SEE BACK SUPPLEMENT FOR DESIGN INFORMATION

NOTES: Information shown is abbreviated. See website for complete information. Dimensions in parentheses are millimeters (mm). NC ranges are based on octave band 2 - 7 sound power levels minus a room absorption of 10dB, re 10⁻¹² Watts. Data was obtained from tests conducted in accordance with ANSI/ASHRAE Standard 70, ISO Standard 5219, and ISO Standard 3741.