

MODEL

- 1500MC - Aluminum mitered corner for model 1500
- 1600MC - Aluminum mitered corner for model 1600
- 1800MC - Aluminum mitered corner for model 1800
- 1850MC - Aluminum mitered corner for model 1850
- 1700MC - Aluminum mitered corner for model 1700

FEATURES

- 90° or 135° included angle ¹
- Choice of inward, outward, or 0° deflection
- Choice of flat face angle or inside or outside corner angle
- 1700MC available in 1-way and 2-way deflection
- Bar/louver configuration to match straight linear sections
- Butt cut ends to line up with butt cut straight linear sections for continuous look

GRILLE SIZES

- Length: 12" or 18" nominal leg length based on width
- Available in widths to match straight linear section

FRAME STYLES

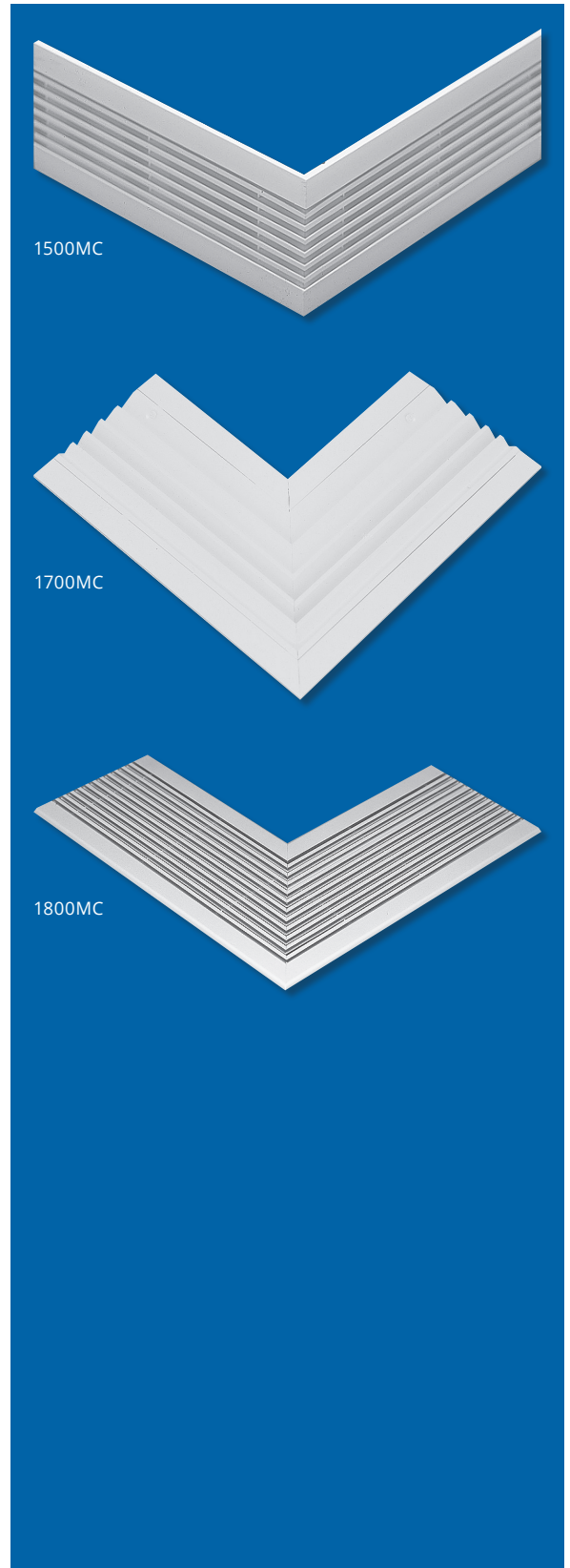
- Available in frames styles to match straight linear sections

COMPATIBLE OPTIONS AND ACCESSORIES

- Spring clip, screw hole, or concealed mounting

NOTES: Not all options available with all configurations or one another. See website for complete compatibility.

¹ Custom angles available upon request.



WEB SEARCH: MITER

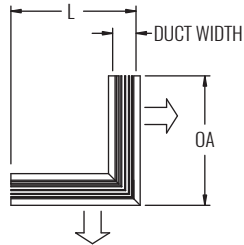


MITERED CORNERS

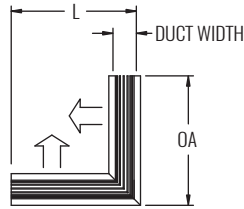
Linear Bar Grilles, Corresponding Mitered Corner Models



DIMENSIONAL DATA

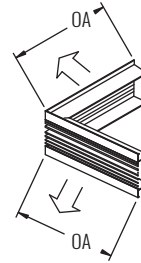


OUTWARD DEFLECTION 'CO'

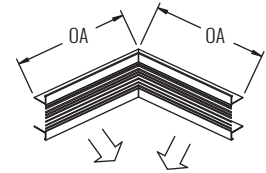


INWARD DEFLECTION 'CI'

90° MITER ANGLE - 01
 1800MC, 1850MC - FLOOR OR SILL APPLICATION
 1500MC, 1600MC - CEILING OR SILL APPLICATION
 [OPTION "S" PROVIDES 0° BLADE DEFLECTION]

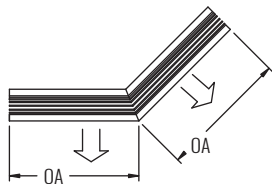


OUTWARD DEFLECTION 'WO'

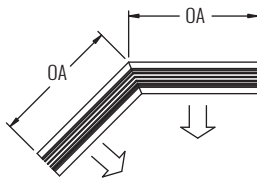


INWARD DEFLECTION 'WI'

90° MITER ANGLE - 01
 1500MC, 1600MC - SIDEWALL APPLICATION
 [NOT AVAILABLE WITH 1800MC, 1850MC]

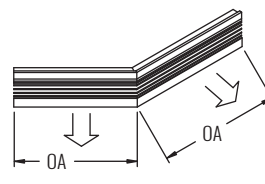


OUTWARD DEFLECTION 'CO'

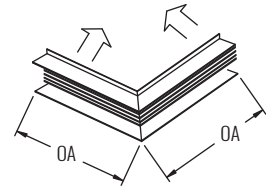


INWARD DEFLECTION 'CI'

135° MITER ANGLE - 02
 1800MC, 1850MC - FLOOR OR SILL APPLICATION
 1500MC, 1600MC - CEILING OR SILL APPLICATION
 [OPTION "S" PROVIDES 0° BLADE DEFLECTION]



OUTWARD DEFLECTION 'WO'



INWARD DEFLECTION 'WI'

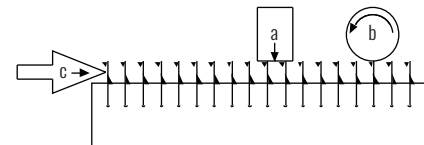
135° MITER ANGLE - 02
 1500MC, 1600MC - SIDEWALL APPLICATION
 [NOT AVAILABLE WITH 1800MC, 1850MC]

OVERALL DIMENSIONS BY FRAMESTYLE

DUCT WIDTH	DUCT L	1500/1600 FRAMES							1800/1850 FRAMES			1700 FRAMES	
		A	B	C	D	R	DS	RG	H	M	N	LA	LB
2" - 4" (OTHERS) ¹	12"	12 7/8"	12 5/8"	12 3/8"	12 1/8"	11 7/8"	12 3/16"	12"	12 7/8"	12 13/16"	12"	13"	12 3/4"
3 1/2" (MODEL 1700MC)	(305)	(327)	(321)	(314)	(308)	(302)	(310)	(305)	(327)	(325)	(305)	(330)	(224)
4 1/2" - 12" (OTHERS) ¹	18"	18 7/8"	18 5/8"	18 3/8"	18 1/8"	17 7/8"	18 3/16"	18"	18 7/8"	18 13/16"	18"	19"	18 3/4"
1/4" - 12 1/2" (MODEL 1700MC)	(457)	(479)	(473)	(467)	(460)	(454)	(462)	(457)	(479)	(478)	(457)	(483)	(476)

MAXIMUM FLOOR LOADING

MODEL	BLADE	SPACING	MAX VERTICAL DISTRIBUTED LOAD (a)	MAX VERTICAL LIVE LOAD (b)	MAX HORIZONTAL LOAD (c)
			lbs/in ²	lbs/ft ²	lbs
1800 NORMAL	7/32" (6)	1/2" (13)	250	250	50
1800 PENCIL PROOF	7/32" (6)	7/16" (11)	250	250	50



FLOOR LOADING ILLUSTRATION
 REFER TO TABLE (LEFT)

SEE PREVIOUS PAGES FOR PERFORMANCE INFORMATION

SEE BACK SUPPLEMENT FOR DESIGN INFORMATION

NOTES: Information shown is abbreviated. See website for complete information. Dimensions in parentheses are millimeters (mm).

¹ "Others" include 1500MC, 1600MC, 1800MC, and 1850MC models. See corresponding straight models on previous pages for related performance data.