

**MODEL**

- 9EGC5 - Stainless steel egg crate return grille with 1 3/8" flange

**FEATURES**

- 304 stainless steel construction (316 optional)
- 1/2" x 1/2" x 1/2" core

**GRILLE SIZE**

- Width: 4" - 48" (1" increments)
- Height: 4" - 48" (1" increments)

**FRAME STYLES**

- F22 - Surface mount
- F23 - Lay-in T-bar

**PANEL SIZES**

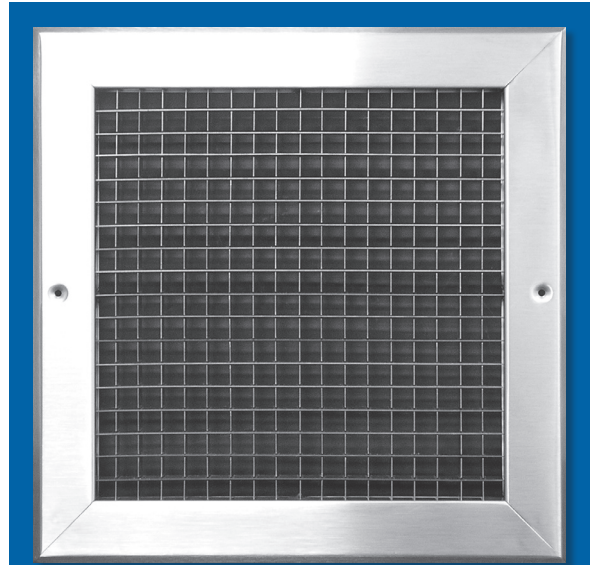
- 24"x24"
- 48"x24"

**COMPATIBLE OPTIONS AND ACCESSORIES**

- Countersunk screw holes <sup>1</sup>
- 9OBD - Stainless steel OBD welded to unit, face adjustable
- 98PF - Stainless steel plaster frame
- 9SRA - Stainless steel square to round adapter

**NOTES:**

- <sup>1</sup> Unit shipped with #6x1 1/4" stainless steel sheet metal screws.

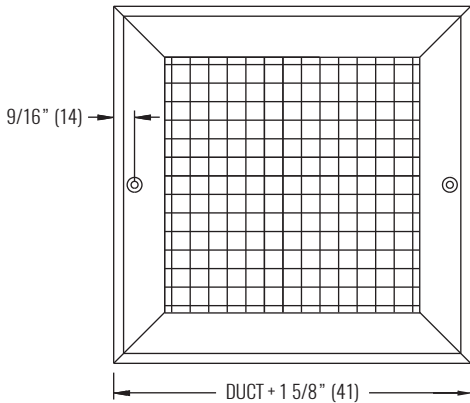


# 9EGC5

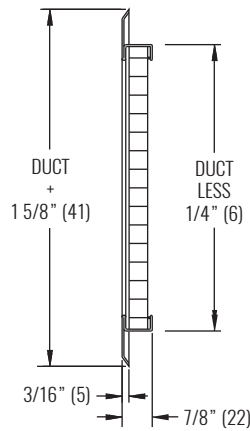
Stainless Steel Grille, Egg Crate



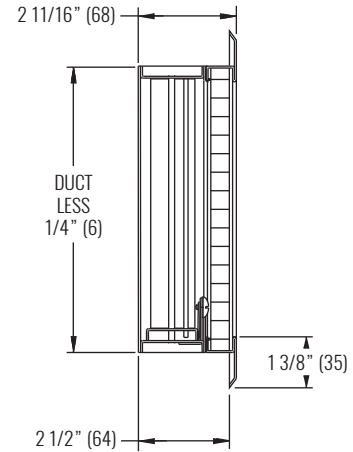
## DIMENSIONAL DATA



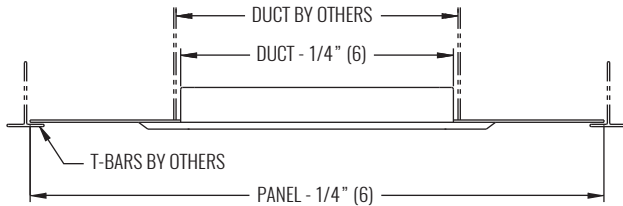
FACE VIEW



FRAME 22, SURFACE MOUNT



FRAME 22, SURFACE MOUNT WITH 90BD



FRAME 23, LAY-IN T-BAR

NOTES: Dimensions in parentheses are millimeters (mm).

## PERFORMANCE DATA

SIZE	PERFORMANCE	
	NC (< 25)	NC (25 - 40)
UNIT	CFM	CFM
6"x6"	100 - 225	256 - 350
8"x8"	150 - 375	431 - 600
10"x10"	200 - 550	638 - 900
12"x12"	300 - 775	894 - 1250
14"x14"	400 - 1025	1181 - 1650
16"x16"	500 - 1300	1500 - 2100
18"x18"	600 - 1600	1850 - 2600
20"x20"	800 - 1950	2238 - 3100
22"x10"	450 - 1125	1294 - 1800
22"x22"	900 - 2300	2650 - 3700
24"x12"	600 - 1450	1663 - 2300
24"x24"	1100 - 2700	3100 - 4300

SEE BACK SUPPLEMENT FOR DESIGN INFORMATION

NOTES: Information shown is abbreviated. See website for complete information. Throw value ranges are given for isothermal conditions, unless otherwise noted, and a terminal velocity of 50 FPM (0.25 m/s). NC ranges are based on octave band 2 - 7 sound power levels minus a room absorption of 10dB, re 10<sup>-12</sup> Watts. Data was obtained from tests conducted in accordance with ANSI/ASHRAE Standard 70, ISO Standard 5219, and ISO Standard 3741.