

## MODEL

- AFH - Flat-faced, ceiling mounted, low velocity displacement diffuser with heating and cooling changeover

## FEATURES

- 20 gauge front panel
- Dual plenum chambers allow heating/cooling changeover
- Heating supplied by 1" Designflo® (DFL) linear slot diffuser with adjustable pattern controllers (available in 1-slot or 2-slot configurations)

## INLET SIZES <sup>1</sup>

- 6"x6"
- 12"x6"
- 18"x6"
- 24"x6"
- 30"x6"
- 36"x6"

## FRAME STYLES

- F22 - Surface mount <sup>2</sup>
- F23 - Lay-in T-bar

## PANEL SIZES

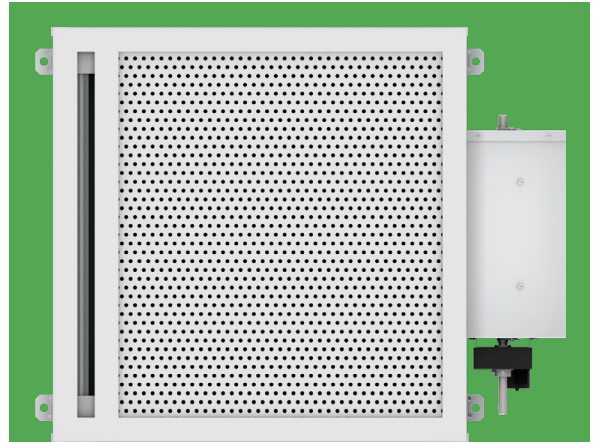
- 24"x24"
- 48"x24"

## COMPATIBLE OPTIONS AND ACCESSORIES

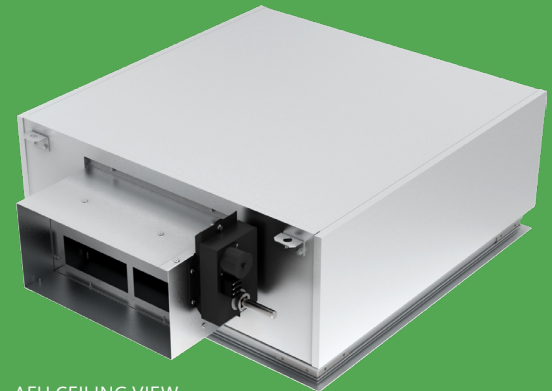
- Plenum insulation
- Electric actuator
- Inlet airflow sensor

### NOTES:

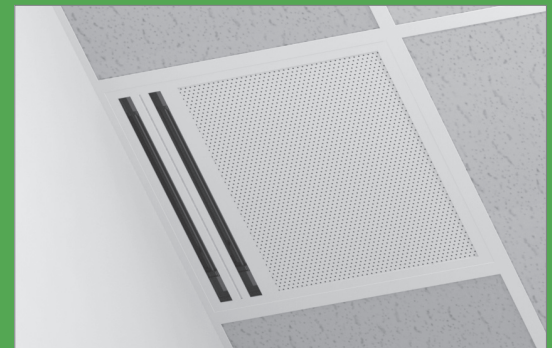
- <sup>1</sup> Inlet sizes 24, 30, and 36 are NOT available on panel size 24"x24". The inlet is always opposite of slot location.
- <sup>2</sup> Frame style F22 includes a separate plaster frame (model 5HCF23), shipped loose for field installation.



AFH 1-SLOT CONFIGURATION

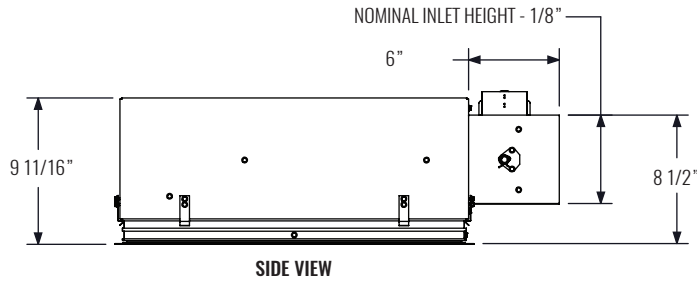


AFH CEILING VIEW

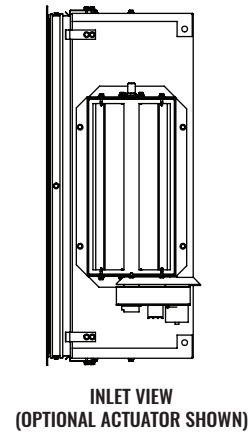
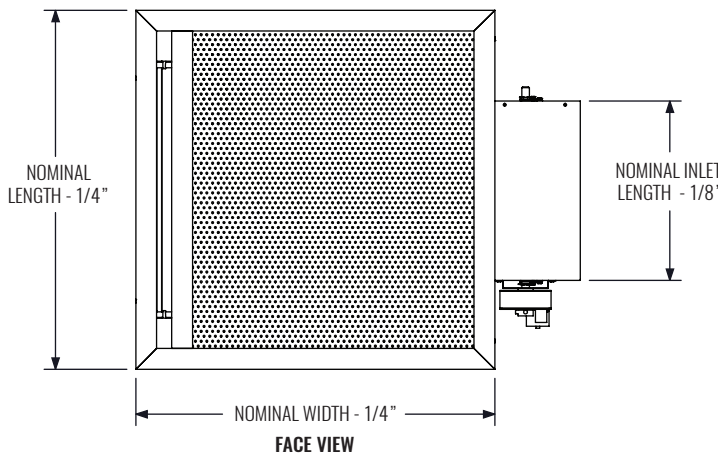


AFH 2-SLOT CONFIGURATION

## DIMENSIONAL DATA



DIMENSIONS		
PANEL SIZE	NOMINAL DUCT SIZE	DEPTH
24" x 24"	6" x 6"	6"
	12" x 6"	
	18" x 6"	
48" x 24"	24" x 6"	6"
	30" x 6"	
	36" x 6"	



## PERFORMANCE AND DESIGN DATA

SIZE	PERFORMANCE		
	NOMINAL W x H	CFM RANGE	NC RANGE
<b>COOLING MODE</b>			
24" x 24"	30 - 121	7 - 18	2 - 5
24" x 48"	67 - 268	8 - 28	4 - 6

SIZE		PERFORMANCE			
SLOT SIZE	# OF SLOTS	CFM RANGE	NC RANGE	1-WAY THROW MIN (ft)	1-WAY THROW MAX (ft)
<b>HEATING MODE</b>					
1"	(1) 24"	30 - 121	8 - 30	2 - 4 - 9	12 - 15 - 21
1"	(1) 48"	67 - 268	8 - 35	3 - 7 - 14	18 - 22 - 30
1"	(2) 24"	30 - 121	7 - 19	1 - 1 - 6	8 - 12 - 21
1"	(2) 48"	67 - 268	7 - 25	1 - 3 - 10	13 - 19 - 31

DESIGN	
PARAMETERS	COOLING
SUPPLY AIR TEMPERATURE	65 - 68°F
RECOMMENDED FACE VELOCITY	40 FPM

NOTES: Information shown is abbreviated. See website for complete information. Performance shown is based on the following operating conditions: 75°F, 50% relative humidity room design temperature. The "Near Zone Range" provides the distance in feet, measured from the face of the diffuser to where the discharge air drops down to 1" above floor level. Throw values are given for terminal velocities of 150, 100, and 50 FPM. NC values are based on octave band 2 - 7 sound power levels minus a room absorption of 10dB, re 10<sup>-12</sup> Watts. Data was obtained from tests conducted in accordance with the following: ANSI/ASHRAE Standard 70, ISO Standard 5219, and ISO Standard 3741. Diffuser was mounted in a 9 ft. ceiling with no sidewall entrainment. Adjacent Zone size represents the throw distance in feet from on the floor directly under the diffuser to a terminal velocity of 40 FPM measured at 1" above the floor.