

MODEL

- KVPE - Vertical stack fan coil unit, exposed cabinet

FEATURES

- Galvanized steel construction
- Durable powder coat paint
- 1/2" thick fiberglass, foil faced fiberglass, or cellular foam insulation
- Integral filter rack with 1" throwaway, synthetic media MERV 6, or pleated MERV8 filter
- Manual or motorized outside air damper (optional)
- Riser slot knockouts
- Single or double deflection discharge grille(s)

COILS

- Cooling - chilled water (3 or 4 rows)
- Heating - hot water reheat (1 or 2 rows)
- 5 total rows of cooling and heating coils maximum
- 3/8" O.D. seamless copper tubes (0.012" tube wall thickness)
- Stainless steel coil casing (optional)
- High efficiency aluminum fin surface
- Removable for service
- Manual air vents
- Automatic air vents (optional)

DRAIN PANS

- Single wall, galvanized steel or stainless steel, externally insulated - fire retardant and antimicrobial
- Positively sloped to drain connection
- Easily removable for cleaning
- Condensate overflow switch (optional)
- 7/8" O.D. primary drain connection
- P-trap factory installed

FAN/MOTOR ASSEMBLIES

- Forwardly curved, DWDI centrifugal type
- 115, 208-230, 220 and 277V, 1-phase, 3-speed PSC motors
- 115, 208-230, 220 and 277V, 1-phase, 3-speed EC motors
- Quick disconnect motor connections
- Removable fan/motor deck for service

ELECTRICAL

- Electric reheat available
- Electrical enclosure with access door for field wiring terminations
- Terminal block for field connections
- Unit and remote mounted three speed fan switches (optional)
- SCR fan speed controller (optional)
- Main fusing (optional)
- Disconnect switch, toggle, or door interlocking (optional)
- Silent electric heat relays and fan relay (optional)



PIPING PACKAGES

- Factory installed
- 1/2" piping size
- 2-way and 3-way 2 position or floating point control valves
- Isolation ball valves with memory stop
- Stainless steel braided hoses (threaded swivel connections)
- Automatic fixed flow control (optional)
- Unions and P/T ports (optional)
- Analog, digital display or programmable thermostats with remote, unit or ADA mounting options

RISERS

- Type-M or L copper with swaged connections
- 3/4" to 3" diameters
- 1/2" and 3/4" closed cell insulation
- Type-M copper condensate riser
- Riser extensions
- Riser cover
- Ship in advance risers

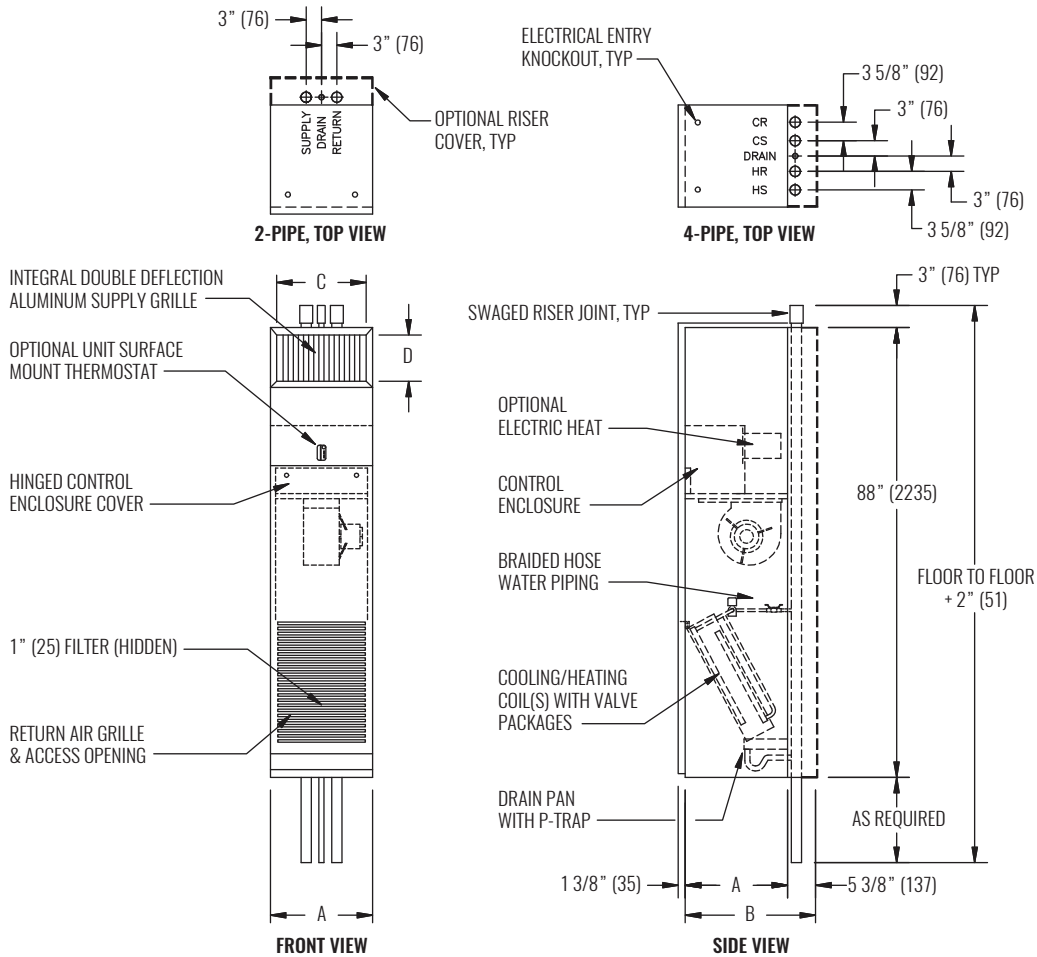
CERTIFICATIONS

- cETL Listed Electric Heat Units - Adherence to UL/ANSI Standard 1995
- AHRI 440 certified performance data

WEB SEARCH: KVPE



DIMENSIONAL DATA



NOTE: Dimensions in parentheses are in millimeters (mm). See table below for dimensional references. Thermostat is shipped loose and may be unit surface mounted or remote wall mounted. All units are back riser, front single supply. Floor and ceiling trim furnished and installed by others.

PERFORMANCE AND DIMENSIONAL DATA

SIZE	PERFORMANCE			DIMENSIONS			
UNIT SIZE	CFM RANGE	TOTAL COOLING CAPACITY RANGE (MBH)	HEATING CAPACITY RANGE (MBH)	A	B	C	D
03	330 - 337	8 - 11	21 - 31	18" (457)	23 3/8" (594)	16" (406)	8" (203)
04	443 - 451	11 - 14	24 - 39	18" (457)	23 3/8" (594)	16" (406)	8" (203)
06	557 - 577	16 - 18	32 - 33	20" (508)	25 3/8" (645)	18" (457)	12" (305)
08	800 - 836	19 - 24	39 - 40	20" (508)	25 3/8" (645)	18" (457)	12" (305)
10	911 - 960	23 - 27	53 - 82	24" (610)	29 3/8" (746)	22" (559)	14" (356)
12	1171 - 1206	28 - 33	61 - 62	24" (610)	29 3/8" (746)	22" (559)	14" (356)

NOTES: Information shown is abbreviated. See website for complete information. Data is based on 115/1/60 3-speed PSC motor on high fan speed with 0.05" ESP. Cooling coil: 75°F DB and 63°F WB EAT, 45°F EWT, 55°F LWT. Heating coil: 70°F DB EAT, 180°F EWT, 160°F LWT. CFM and coil performance ranges will vary depending on coil combination selected.

© Copyright Krueger 2018