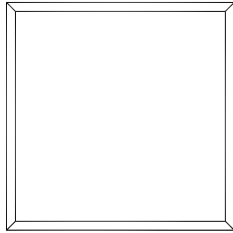


# KRUEGER

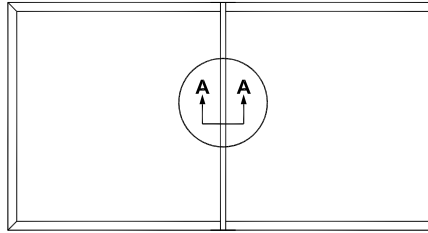
Excellence in Air Distribution

## Oversize Grilles and Registers for Ducts or Openings Larger than 48"

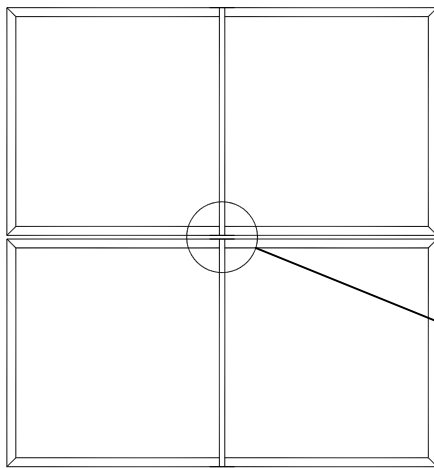
### Joining Multiple Sections with Aluminum Mullions



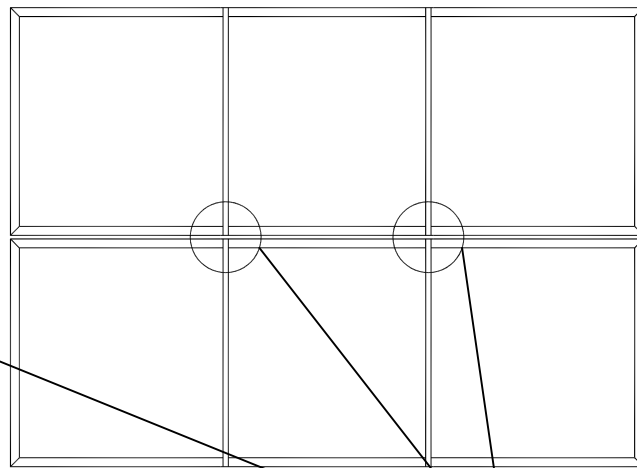
6" - 48" Wide



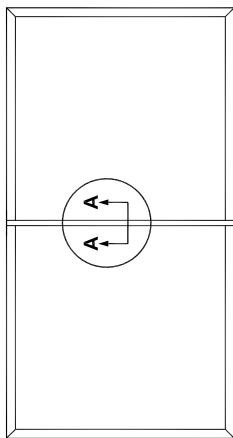
49" - 96" Wide



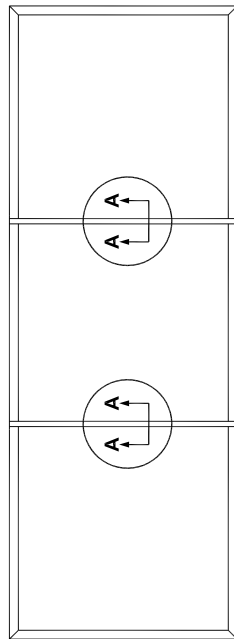
49" - 96" Wide and 49" - 96" High



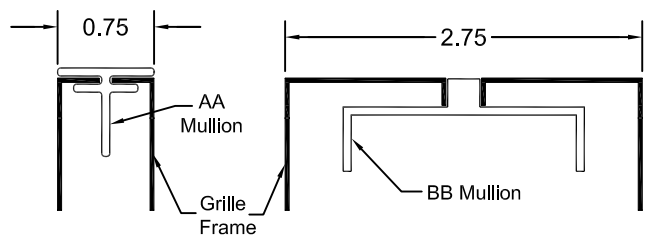
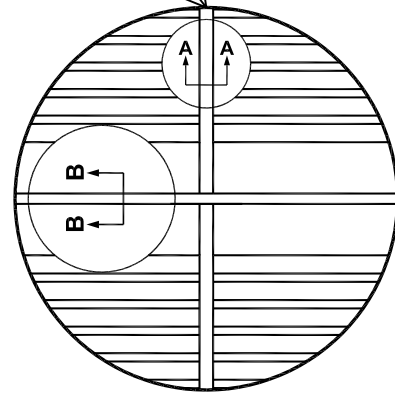
97" - 144" Wide and 49" - 96" High



6" - 48" Wide and  
49-96" Tall



6" - 48" Wide and  
97-144" Tall



DETAIL A-A

DETAIL B-B

**NOTE:** Detail A-A is used for vertical joints. The frames of both vertical sides of the joint are sheared and then butted together. Alignment tabs serve to keep the face surfaces parallel. Detail B-B is used for horizontal joining. Horizontal frames are installed full width with an aluminum mullion in between each frame. This page does not apply to filter grilles. This page is for frame 22 grilles and registers only.