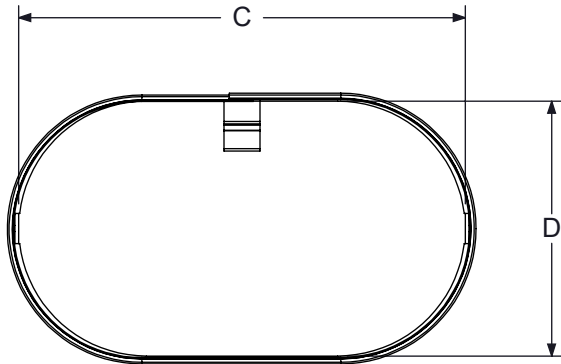


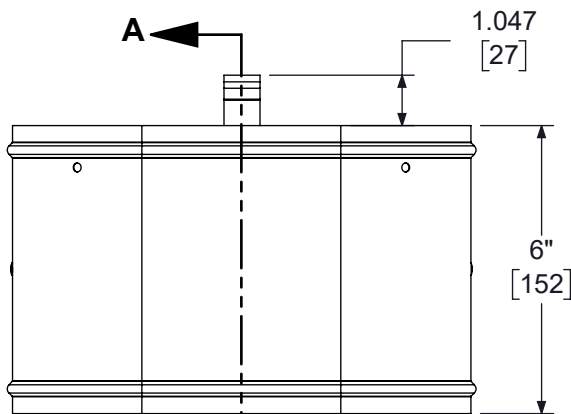
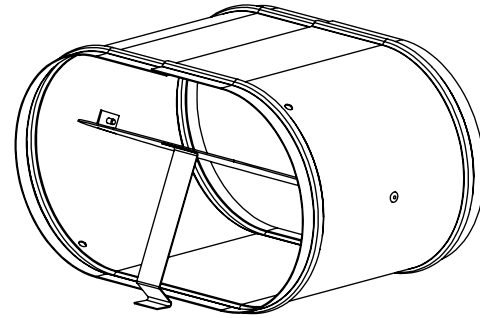
## DFP QD

### DFP MODEL QUADRANT DAMPER DAMPER ACCESSORY

## SUBMITTAL SHEET

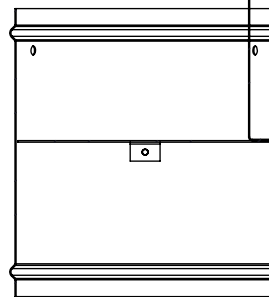


TOP VIEW

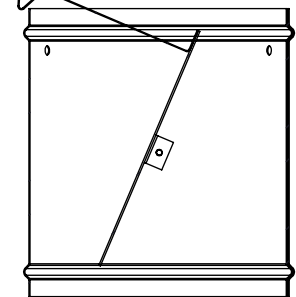


FRONT VIEW

CLOSED POSITION  
 VIEW



OPEN POSITION  
 VIEW



SECTION A-A

#### MATERIAL:

- SHELL/BLADE HOUSING CONSTRUCTED OF 24 GA. GALVANIZED STEEL.
- DAMPER BLADE CONSTRUCTED OF 20 GA. GALVANIZED STEEL. SINGLE BLADE RIVETED TO SHELL HOUSING.
- DAMPER BLADE UNDERSIZED 1/32" FROM SHELL DIMENSIONS. MAY RESULT IN LACK OF AIRTIGHT SEAL EVEN WHEN FULLY CLOSED.
- DAMPER ACTUATOR CONSTRUCTED OF 24 GA. GALVANIZED STEEL.

#### NOTES:

- DAMPER SHIPS SEPARATELY FOR FIELD MOUNTING.
- STANDARD MILL FINISH.
- DAMPER SHIPS IN CLOSED POSITION TO PREVENT SHIPPING DAMAGE.

**SEE PAGE 2 FOR  
 INSTALL VIEW**

| OVAL SIZE | C           | D          |
|-----------|-------------|------------|
| 06        | 6.38 [162]  | 5.38 [137] |
| 08        | 9.50 [241]  | 5.38 [137] |
| 10        | 12.63 [321] | 5.38 [137] |
| 12        | 14.28 [363] | 8.00 [203] |

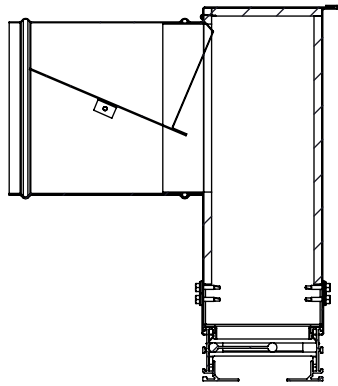
#### DIMENSIONS:

- DIMENSIONS ARE SHOWN AS INCHES [MM] UNLESS NOTED OTHERWISE.

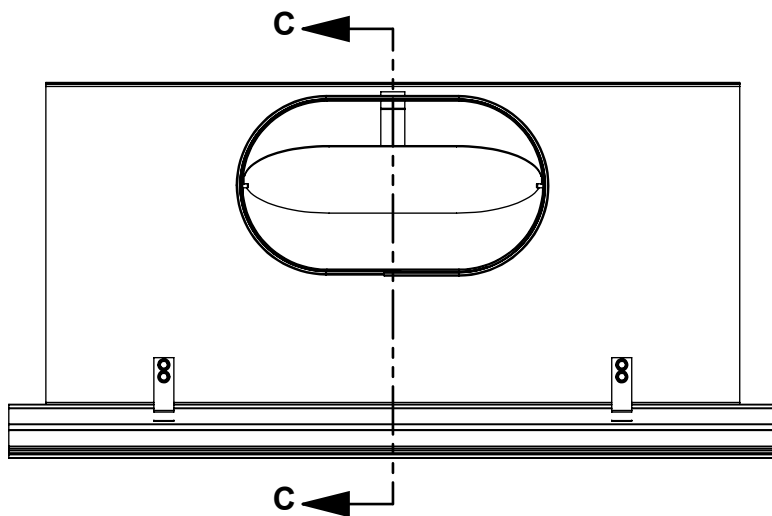
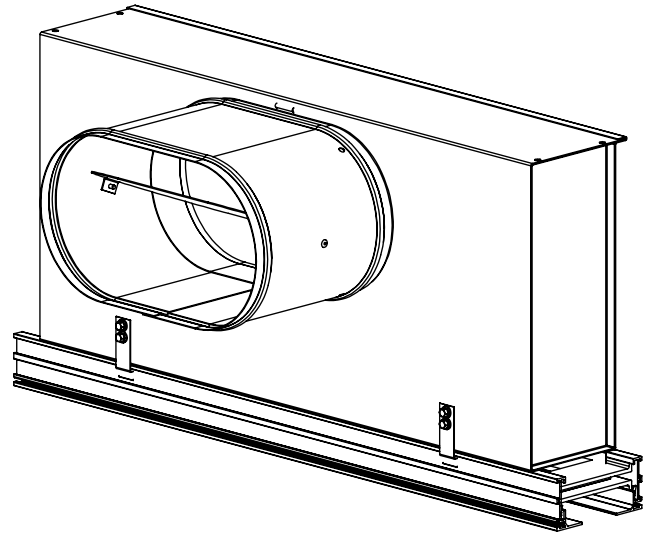
## DFP QD

### DFP MODEL QUADRANT DAMPER DAMPER ACCESSORY

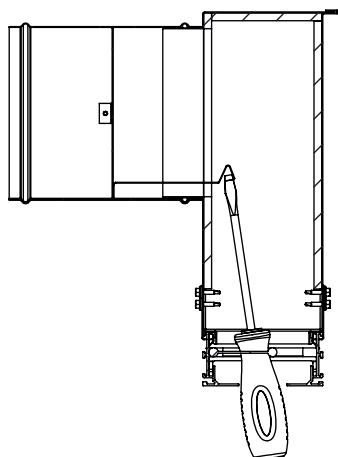
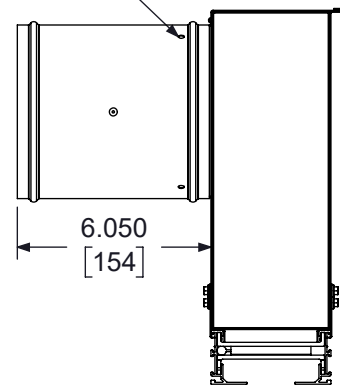
## SUBMITTAL SHEET



SECTION C-C



ATTACHMENT HOLES  
 4 PLCS



#### NOTES:

- ATTACH QUADRANT DAMPER TO PLENUM INLET. POSITION THE LEVER INSIDE THE PLENUM ON THE BOTTOM OF THE INLET COLLAR
- SCREW THROUGH ATTACHMENT HOLES TO SECURE DAMPER TO INLET (ENSURE SCREWS DO NOT INTERFERE WITH ROTATION OF DAMPER BLADE)
- ADJUST DFL PATTERN CONTROLLERS TO ALLOW FOR SCREWDRIVER INSERTION FOR ADJUSTMENT
- USE SCREWDRIVER TO PUSH OR PULL DAMPER ACTUATOR THROUGH DFL FACE