

SURFACE MOUNT DIFFUSER INSTALLATION INSTRUCTIONS



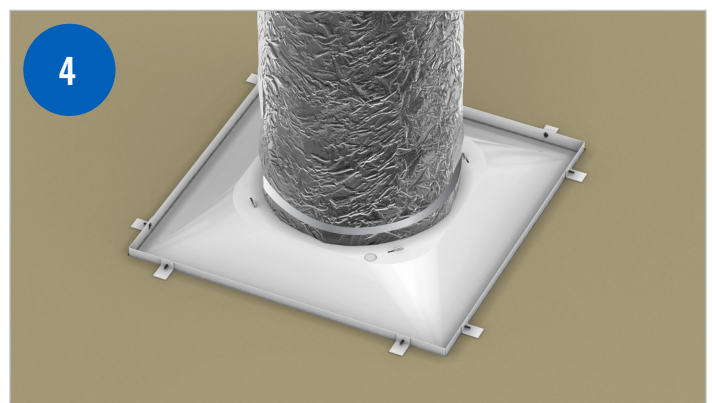
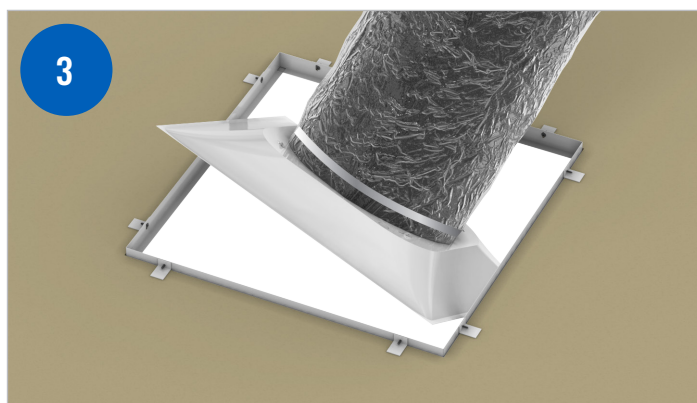
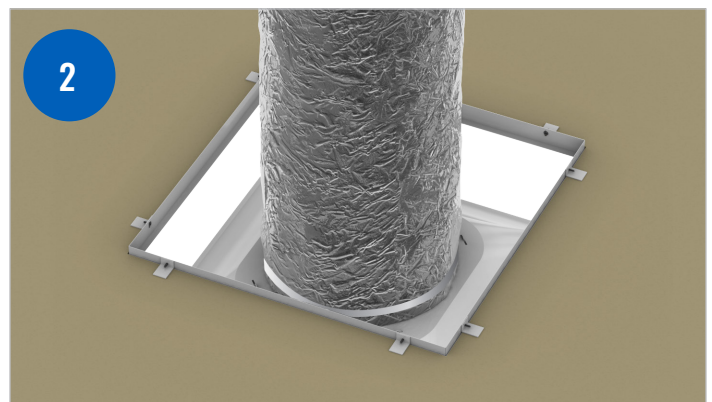
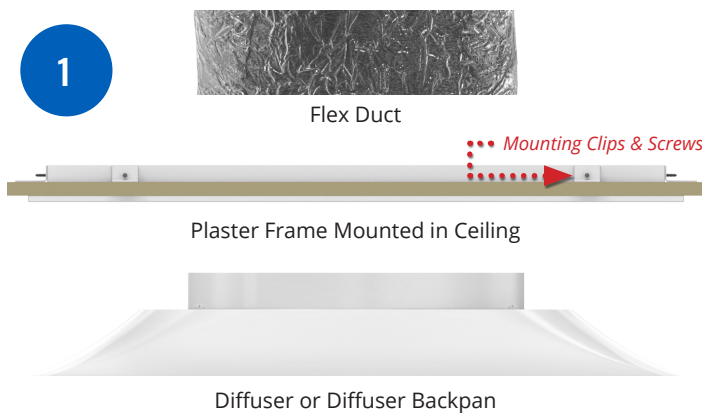
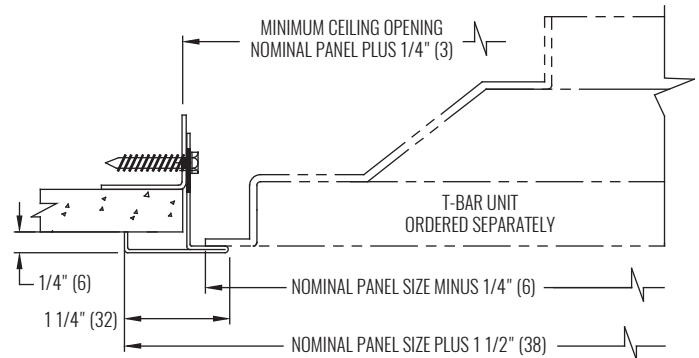
OPTION #1 - SECURE DIFFUSER WITH A PLASTER FRAME (5HCF23/HCF23)

OVERVIEW

- Diffuser can be installed after all other ceiling components. Plaster frame is installed into the ceiling.
- Plaster Frame remains installed in ceiling, but diffuser can be removed without damaging ceiling opening.

INSTALLATION

1. Mount 5HCF23/HCF23 Plaster Frame into the ceiling using factory provided screws and clips.
2. Connect the flex duct to the neck of diffuser (or diffuser backpan if plaque face or removable core).
3. Move the diffuser through the 5HCF23/HCF23 Plaster Frame opening.
4. Lay the diffuser into the 5HCF23/HCF23 Plaster Frame. Attach diffuser face or core as necessary.



NOTES:

- * For Prism, 1400 Series, 1450 Series diffuser models, the Surface Mount (F22) option ALWAYS includes aluminum mounting frame and will use this method of installation.
- ** KSD & DVD diffuser models MUST use a plaster frame due to core not being removable.

SURFACE MOUNT DIFFUSER INSTALLATION INSTRUCTIONS



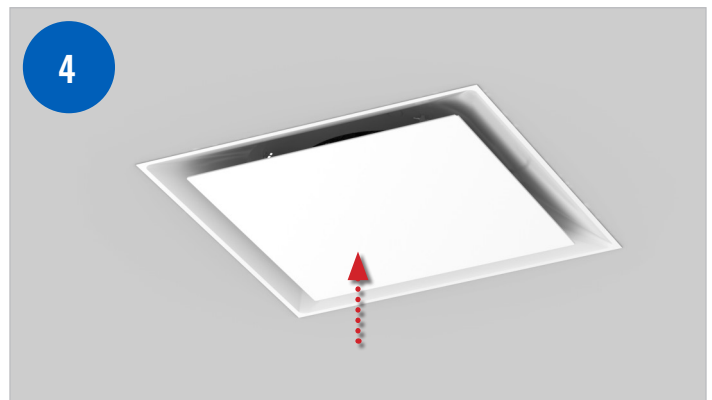
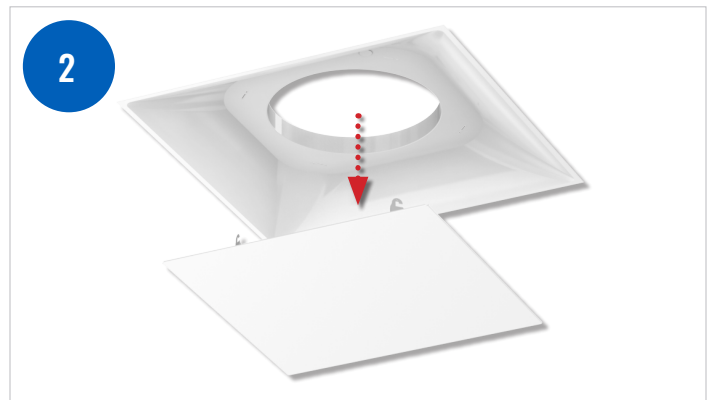
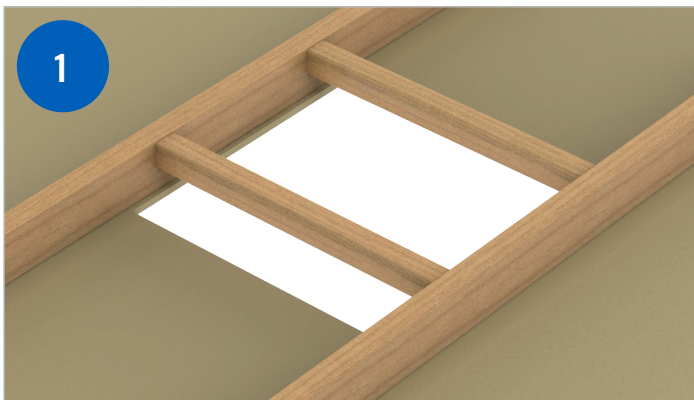
OPTION #2 - SECURE DIFFUSER TO SUB-FRAMING

OVERVIEW

- No extra accessories required for install.
- Only a single border visible from the room-side.
- Only applicable for removable face or core diffusers.

INSTALLATION

1. Install support framing above ceiling opening. Framing should provide an opening that is 1 inch greater than the neck size and be positioned high enough to allow the edges of the of the diffuser/backpan to press firmly against the ceiling.
2. Remove core or face from diffuser.
3. Attach flex duct to the neck of the diffuser, then centrally position the diffuser in the framed opening, leaving a 1/2" gap on each side of the neck. Drive screws vertically through the backpan into the framing. (Screws and washers by others.)
4. Re-attach diffuser core or face to diffuser backpan.



SURFACE MOUNT DIFFUSER INSTALLATION INSTRUCTIONS



OPTION #3 - SECURE DIFFUSER TO HARD DUCT

OVERVIEW

- No extra accessories required for install.
- Only a single border visible from the room-side.
- Only applicable for removable face or core diffusers.

INSTALLATION

1. Remove core or face from diffuser.
2. The hard duct should be placed snugly over the diffuser neck, fitting flush to the top of the backpan.
3. Drive 4 screws horizontally through the neck of the diffuser. (Screws and washers by others.)
4. Re-attach diffuser core to diffuser backpan.

