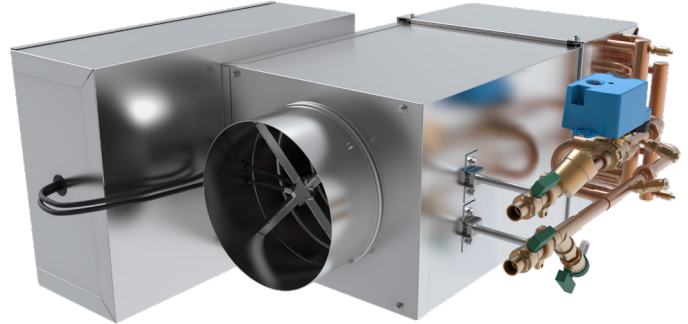


Why choose a factory mounted valve package?

- Valve packages are typically assembled piece-by-piece in the field by plumbers. Doing so takes significant time to individually sweat and connect each valve component together and then attach to the terminal unit water coil. This time is not only costly to the owner, but also to the contractor, who could be working on other projects.
- Other equipment, such as fan coil units, already benefit from factory-mounted valve packages to enhance efficiency and savings. The LMHS-VP is the solution for unlocking similar savings on large projects that employ single duct terminal units.



Faster Install Time and Labor Savings

- Factory mounted valve packages can save 2-3 hours of field labor per unit, which may equate to as much as \$500 per unit. Multiply this across tens or hundreds of terminal units; it can lead to significant savings.
- Labor shortages compel contractors to strategically allocate their field resources. By minimizing the labor hours required for each terminal unit on a project, contractors can expedite their progress and quickly transition to the next assignment. Additionally, factory-mounted valve packages help mitigate the impact of labor shortages, reducing the risk of delays that could affect project timelines.

Factory Quality

- Product quality is critical. For this reason, each valve package and water coil assembly is factory leak tested at several stages during the manufacturing process. Quality inspections are also frequently performed after each step. These frequent checks ensure that a high quality and functional product is produced. Furthermore, factory personnel for valve packages are considered highly skilled labor and are trained for nine months before they are allowed to be unsupervised.
- Quality assurance doesn't end at the factory. The design of the LMHS-VP is such that the valve package is securely attached to the side of the single duct casing and includes a metal shroud that covers and protects the valve package, helping prevent damage from freight carrier mishandling.

Features

- Valves can be configured in a 2-way or 3-way configurations. 2-way valves are used to impede or shutoff water flow through the piping at the terminal unit completely. 3-way valves allow water flow to remain constant, and bypass the water coil when heating is not needed.
- Control valve actuators are available in on/off, proportional, or 3-point floating configurations, so as to fit most commonly specified control sequences.
- The autoflow control valve sets maximum allowable GPM through the water coil, making balancing easy.
- The Y-strainer removes unwanted solids from the water flow, which protects expensive valve components, such as the control valve and autoflow valve.
- Unions allow easy future valve replacements.
- Dedicated P/T ports and isolation ball valves make it easy to balance, isolate, and diagnosis performance issues.