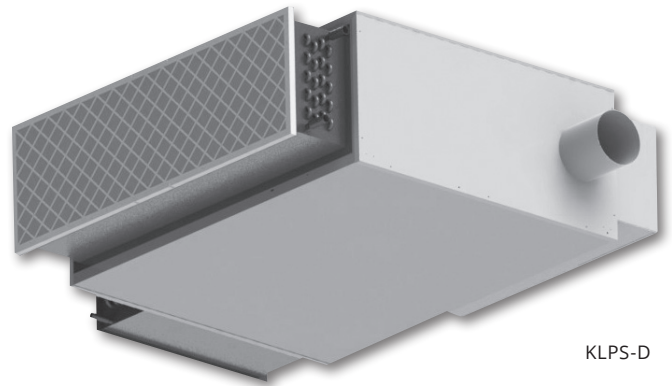


## INTRODUCTION

The KLPS-D is a chilled series fan terminal unit designed to work with a dedicated outdoor air system (DOAS). The KLPS-D offers a sensible only cooling coil installed on the induced air inlet. It comes in four sizes to accommodate any zone requirement or ceiling height restriction. The size 1 unit is only 8 5/8" and size 2 is only 9 1/2" tall, both of which are designed to handle a small zone. The size 3 unit is 11" tall and will accommodate small to medium zones and the size 5 unit is 17" tall and will handle larger zones. The primary air inlet is sized to handle the fresh air zone ventilation requirements supplied from a DOAS air handler. The return air from the ceiling plenum passes through the sensible cooling coil and mixes with a fresh air provided by the primary inlet and supplies the required amount of conditioned air into the zone. The standard hot water and electric heat options are also available making the KLPS-D the ultimate single design solution for a buildings heating and cooling needs.



KLPS-D

## MODEL

KLPS-D - DOAS Construction, Chilled Series Fan Powered Terminal Unit

## FEATURES

- Unit size 1: Ultra low profile at only 8 5/8" tall
- Unit size 2: Ultra low profile at only 9 1/2" tall
- Unit size 3: Only 11" high to accommodate installation in low height ceiling plenum spaces
- Unit size 5: Only 17" high for extra capacity applications
- Airflow capacities: Range up to 1550 CFM to allow airflow control for commercial applications
- Cooling coil on the induced air inlet provides conditioned air into the space to handle the sensible cooling load
- Heavy gage galvanized steel casing for unit strength and product durability
- Several casing liner options provide quiet and clean operation
- Fully removable, bottom access panel included with each unit for easy access to all internal components
- Control enclosure located on left-hand or right-hand side for easier installation
- Single point electrical connection minimizes number of ceiling plenum electrical connections
- Energy efficient ECM (electronically commutated motor) fan motor
- Manual adjustable speed controller or Building Management System compatible remote adjustable speed controller
- Isolated motor/blower assembly limits casing acoustical transmission
- ETL listings are under UL 60335-2-40 electrical safety
- External filter option allows quick and easy access for routine replacement. MERV 8 filter available
- Factory mounted digital controls may be customized for many building systems
- Auxiliary heat offers a wide range of options, including electric and hot water heat
- LineaHeat solid state electronic proportional control of electric heat is available with or without leaving air temperature control
- AC solid state relays offer silent operation for staged electric heat
- Revit models are available at [www.krueger-hvac.com/revit](http://www.krueger-hvac.com/revit)