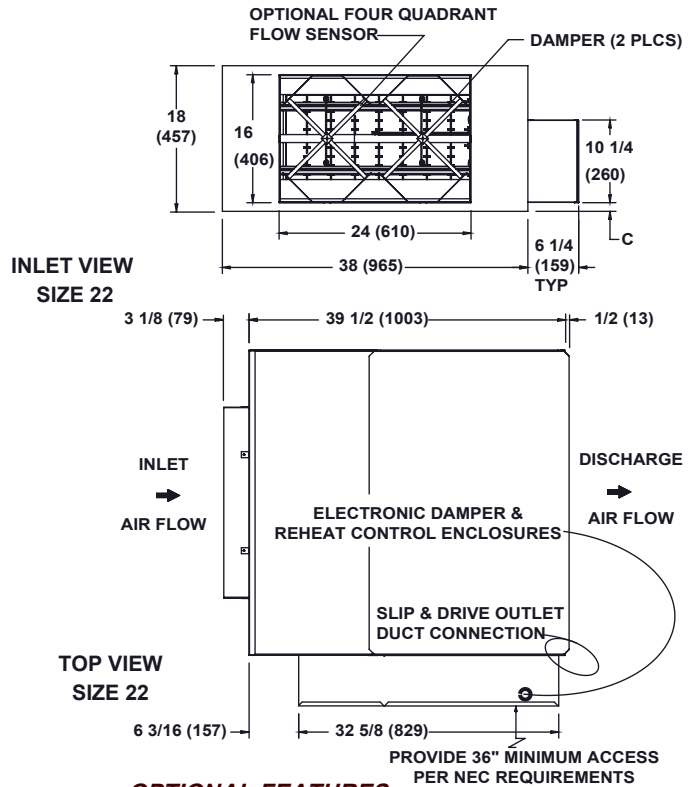
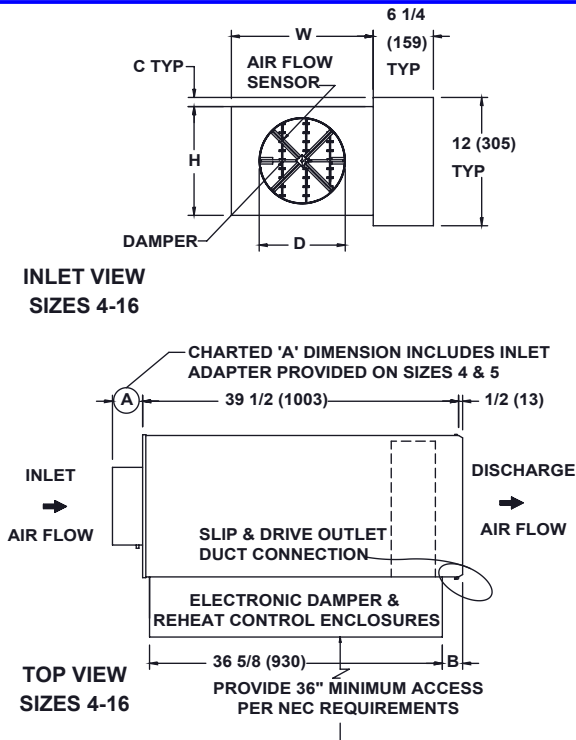


LMHS ELECTRIC HEAT - ELECTRONIC CONTROL

SUBMITTAL SHEET



STANDARD FEATURES:

- 22 Ga. Zinc coated steel construction.
- 1/2" thick dual density fiberglass insulation meeting **NFPA 90A** and **UL 181** safety requirements.
- Four quadrant averaging cross flow sensor.
- Variety of analog and digital electronic control packages for pressure independent systems.
- **ETL** listed - Adherence to **UL 429** for electrically operated valves
- **ETL** listed electric heater
- Electronic damper & reheat controls enclosure.
- Magnetic contactors are standard step controllers when electronic control systems are specified.
- Automatic reset thermal cutout
- Manual reset thermal cutout
- Positive pressure air flow switch

NOTE : RIGHT HAND CONFIGURATION SHOWN ABOVE.
 LEFT HAND IS AVAILABLE
 HORIZONTAL INSTALLATION ONLY

DIMENSIONS ARE GIVEN AS INCHES (MM)

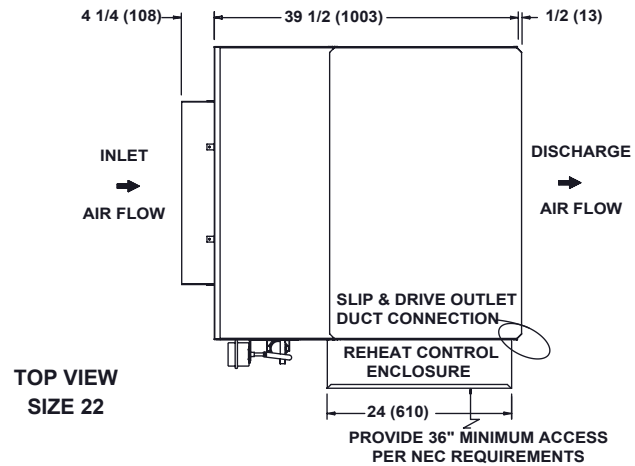
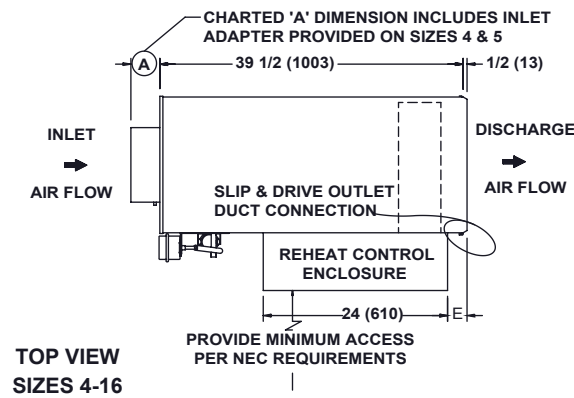
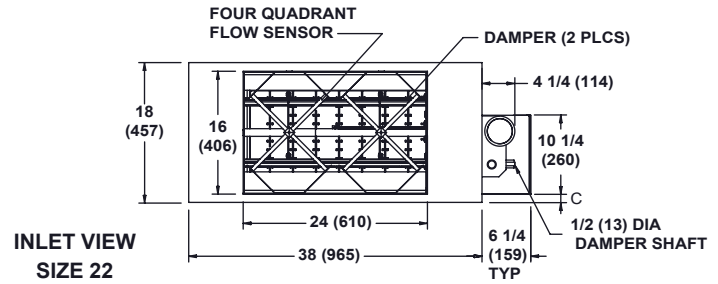
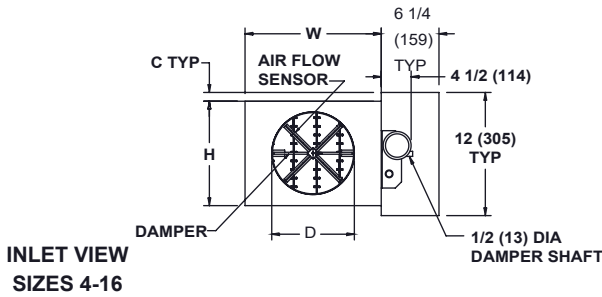
INLET SIZE	NOM MAX CFM (L/s)	W	H	A	C	D	B
4	230 (109)	12 (305)	8 (203)	5 3/8 (136)	2 (51)	3 7/8 (98)	5 1/2 (140)
5	360 (170)	12 (305)	8 (203)	5 3/8 (136)	2 (51)	4 7/8 (124)	5 1/2 (140)
6	520 (245)	12 (305)	8 (203)	3 3/8 (86)	2 (51)	5 7/8 (149)	5 1/2 (140)
7	710 (335)	12 (305)	10 (254)	3 3/8 (86)	1 (25)	6 7/8 (175)	5 1/2 (140)
8	925 (437)	12 (305)	10 (254)	3 3/8 (86)	1 (25)	7 7/8 (200)	5 1/2 (140)
9	1200 (566)	14 (356)	12 1/2 (318)	3 3/8 (86)	-	8 7/8 (225)	3 1/2 (89)
10	1450 (685)	14 (356)	12 1/2 (318)	3 3/8 (86)	-	9 7/8 (251)	3 1/2 (89)
12	2100 (991)	16 (406)	15 (381)	3 3/8 (86)	-	11 7/8 (302)	3 1/2 (89)
14	2900 (1369)	20 (508)	17 1/2 (445)	3 3/8 (86)	-	13 7/8 (352)	1 1/2 (38)
16	3700 (1746)	24 (610)	18 (457)	3 3/8 (86)	-	15 7/8 (403)	1 1/2 (38)
22	7100 (3351)	38 (965)	18 (457)	SEE ABOVE	1 1/8 (29)	SEE ABOVE	-

OPTIONAL FEATURES:

- 20 Ga. Zinc coated steel construction
- Liners: 1/2" dual density fiberglass
- 1" dual density fiberglass
- Perforated double wall 1/2"
- Perforated double wall 1"
- Right hand control & electric heat.
- Left hand control & electric heat.
- Linear averaging sensor.
- Hanger Brackets
- LineaHeat controlled SSR heat (no mercury contactor option)
- Discharge temperature sensor.
- Heater voltages:
 - 120v/1Ø
 - 208v/1Ø
 - 240v/1Ø
 - 277v/1Ø
 - 208v/3Ø/3-wire
 - 480v/3Ø/4-wire
- Dust tight construction
- Heater fused disconnect switch
- Mercury contactors
- Heater disconnect switch
- Fuse block w/ fuses for primary overload protection

LMHS SUBMITTAL SHEET

ELECTRIC HEAT PNEUMATIC - MULTI-FUNCTION CONTROL



STANDARD FEATURES:

- 22 Ga. Zinc coated steel construction.
- 1/2" thick dual density fiberglass insulation meeting **NFPA 90A** and **UL 181** safety requirements.
- Four quadrant averaging cross flow sensor.
- Pneumatic pressure independent controls
- Compressed air consumption : 1.0 scfh @ 20 psig.
- **ETL** listed electric heater
- Control enclosure houses all electric heat control components.
- PE switches with step controllers when control systems up to 15 amps are specified. At 15 amps or more magnetic contactors are standard or when remote disconnect is specified.
- Automatic reset thermal cutout
- Manual reset thermal cutout
- Positive pressure air flow switch

NOTE : RIGHT HAND CONFIGURATION SHOWN ABOVE.
 LEFT HAND IS AVAILABLE
 HORIZONTAL INSTALLATION ONLY

OPTIONAL FEATURES:

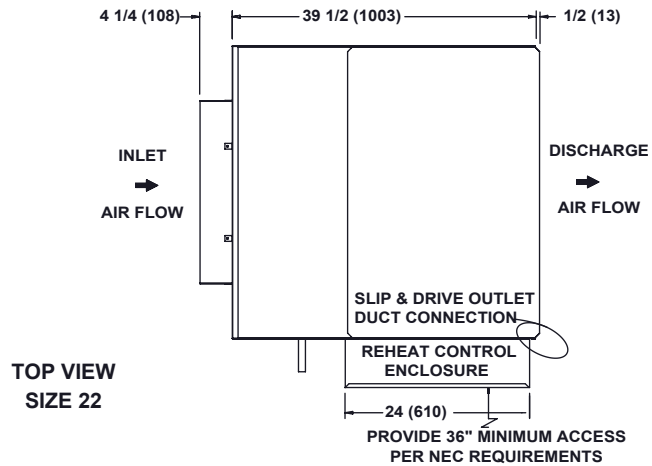
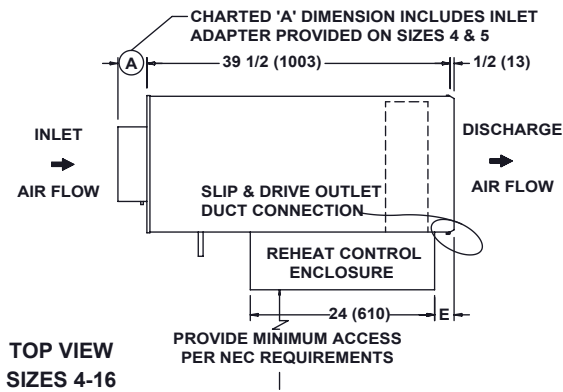
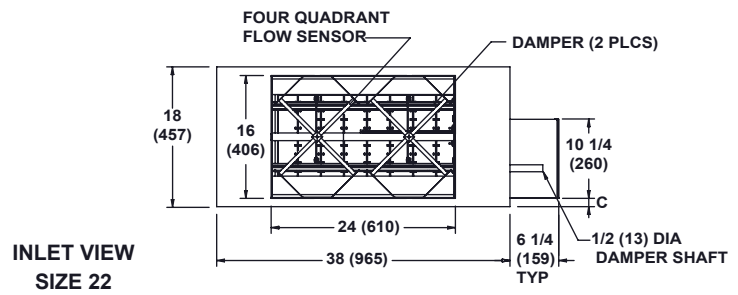
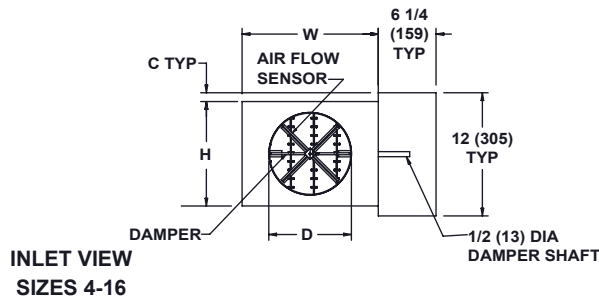
- 20 Ga. Zinc coated steel construction
- Liners: 1/2" dual density fiberglass
- 1" dual density fiberglass
- Perforated double wall 1/2"
- Perforated double wall 1"
- Right hand control & electric heat.
- Left hand control & electric heat.
- Linear averaging sensor.
- Hanger Brackets
- Heater voltages:
 - 120v/1Ø
 - 208v/1Ø
 - 240v/1Ø
 - 277v/1Ø
 - 208v/3Ø/3-wire
 - 480v/3Ø/4-wire
- Mercury contactors
- Heater disconnect switch
- Normally open damper
- Normally closed damper
- Fuse block w/ fuses for primary overload protection
- None
- Steriliner
- Sterilwall 1/2"
- Sterilwall 1"
- 1/2" Cellular - fibre free
- 1" Cellular - fibre free
- Dust tight construction
- Heater fused disconnect switch
- Direct acting thermostat
- Reverse acting thermostat

DIMENSIONS ARE GIVEN AS INCHES (MM)

INLET SIZE	NOM MAX CFM (L/s)	W	H	A	C	D	B
4	230 (109)	12 (305)	8 (203)	5 3/8 (136)	2 (51)	3 7/8 (98)	5 1/2 (140)
5	360 (170)	12 (305)	8 (203)	5 3/8 (136)	2 (51)	4 7/8 (124)	5 1/2 (140)
6	520 (245)	12 (305)	8 (203)	3 3/8 (86)	2 (51)	5 7/8 (149)	5 1/2 (140)
7	710 (335)	12 (305)	10 (254)	3 3/8 (86)	1 (25)	6 7/8 (175)	5 1/2 (140)
8	925 (437)	12 (305)	10 (254)	3 3/8 (86)	1 (25)	7 7/8 (200)	5 1/2 (140)
9	1200 (566)	14 (356)	12 1/2 (318)	3 3/8 (86)	-	8 7/8 (225)	3 1/2 (89)
10	1450 (685)	14 (356)	12 1/2 (318)	3 3/8 (86)	-	9 7/8 (251)	3 1/2 (89)
12	2100 (991)	16 (406)	15 (381)	3 3/8 (86)	-	11 7/8 (302)	3 1/2 (89)
14	2900 (1369)	20 (508)	17 1/2 (445)	3 3/8 (86)	-	13 7/8 (352)	1 1/2 (38)
16	3700 (1746)	24 (610)	18 (457)	3 3/8 (86)	-	15 7/8 (403)	1 1/2 (38)
22	7100 (3351)	38 (965)	18 (457)	SEE ABOVE	1 1/8 (29)	SEE ABOVE	-

LMHS ELECTRIC HEAT - FIELD SUPPLIED

SUBMITTAL SHEET



STANDARD FEATURES:

- 22 Ga. Zinc coated steel construction.
- 1/2" dia shaft extending from the unit casing .
- 1/2" thick dual density fiberglass insulation meeting **NFPA 90A** and **UL 181** safety requirements.
- Four quadrant averaging cross flow sensor.
- Field installation of controls
- **ETL** listed electric heater
- PE switches with step controllers when control systems up to 15 amps are specified. At 15 amps or more magnetic contactors are standard or when remote disconnect is specified.
- Control enclosure houses all electric heat control components.
- Automatic reset thermal cutout
- Manual reset thermal cutout
- Positive pressure air flow switch

NOTE : RIGHT HAND CONFIGURATION SHOWN ABOVE.
 LEFT HAND IS AVAILABLE
 HORIZONTAL INSTALLATION ONLY

DIMENSIONS ARE GIVEN AS INCHES (MM)

INLET SIZE	NOM MAX CFM (L/s)	W	H	A	C	D	B
4	230 (109)	12 (305)	8 (203)	5 3/8 (136)	2 (51)	3 7/8 (98)	5 1/2 (140)
5	360 (170)	12 (305)	8 (203)	5 3/8 (136)	2 (51)	4 7/8 (124)	5 1/2 (140)
6	520 (245)	12 (305)	8 (203)	3 3/8 (86)	2 (51)	5 7/8 (149)	5 1/2 (140)
7	710 (335)	12 (305)	10 (254)	3 3/8 (86)	1 (25)	6 7/8 (175)	5 1/2 (140)
8	925 (437)	12 (305)	10 (254)	3 3/8 (86)	1 (25)	7 7/8 (200)	5 1/2 (140)
9	1200 (566)	14 (356)	12 1/2 (318)	3 3/8 (86)	-	8 7/8 (225)	3 1/2 (89)
10	1450 (685)	14 (356)	12 1/2 (318)	3 3/8 (86)	-	9 7/8 (251)	3 1/2 (89)
12	2100 (991)	16 (406)	15 (381)	3 3/8 (86)	-	11 7/8 (302)	3 1/2 (89)
14	2900 (1369)	20 (508)	17 1/2 (445)	3 3/8 (86)	-	13 7/8 (352)	1 1/2 (38)
16	3700 (1746)	24 (610)	18 (457)	3 3/8 (86)	-	15 7/8 (403)	1 1/2 (38)
22	7100 (3351)	38 (965)	18 (457)	SEE ABOVE	1 1/8 (29)	SEE ABOVE	-

OPTIONAL FEATURES:

- 20 Ga. Zinc coated steel construction
- Liners: 1/2" dual density fiberglass None
- 1" dual density fiberglass Steriliner
- Perforated double wall 1/2" Sterilwall 1/2"
- Perforated double wall 1" Sterilwall 1"
- 1/2" Cellular - fibre free 1" Cellular - fibre free
- Right hand control & electric heat.
- Left hand control & electric heat.
- Linear averaging sensor.
- Hanger Brackets
- Heater voltages:
 - 120v/1Ø
 - 240v/1Ø
 - 208v/3Ø/3-wire
 - 208v/1Ø
 - 277v/1Ø
 - 480v/3Ø/4-wire
- Mercury contactors Dust tight construction
- Heater disconnect switch Heater fused disconnect switch
- Direct acting thermostat
- Reverse acting thermostat
- Fuse block w/ fuses for primary overload protection