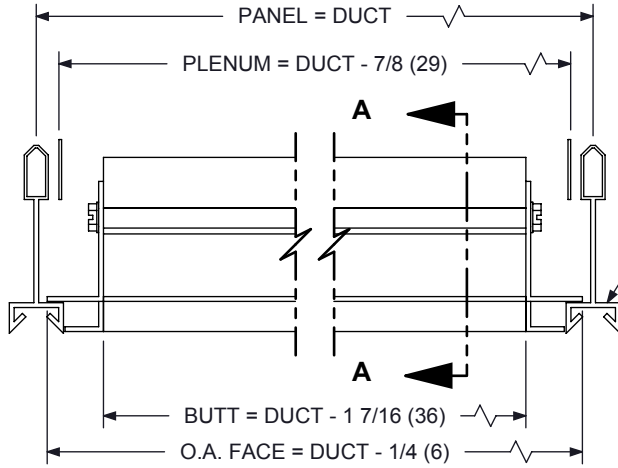


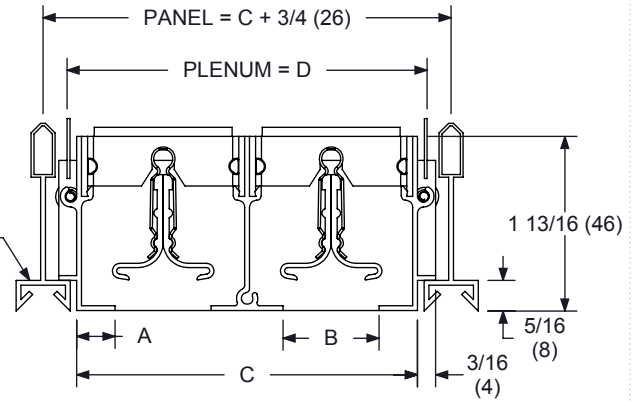
1900 SERIES LINEAR SLOT DIFFUSER FRAMESTYLE 'K' NARROW T-BAR CEILING MOUNT

JOB NAME _____
ENGINEER _____
CONTRACTOR _____
TAG _____

SUBMITTAL SHEET



SIDE VIEW



**SECTION A-A
WITH BLADES**

1950K (1/2" Spacing)				
SLOT	A	B	C	D
1	13/32 (10)	1/2 (13)	1-5/16 (33)	1-7/16 (37)
2	13/32 (10)	1/2 (13)	2-9/16 (65)	2-11/16 (68)
3	13/32 (10)	1/2 (13)	3-13/16 (97)	3-15/16 (100)
4	13/32 (10)	1/2 (13)	5-1/16 (129)	5-3/16 (132)
5	13/32 (10)	1/2 (13)	6-5/16 (160)	6-7/16 (164)
6	13/32 (10)	1/2 (13)	7-9/16 (192)	7-11/16 (195)
7	13/32 (10)	1/2 (13)	8-13/16 (224)	8-15/16 (227)
8	13/32 (10)	1/2 (13)	10-1/16 (256)	10-3/16 (259)

1975K (3/4" Spacing)				
SLOT	A	B	C	D
1	13/32 (10)	3/4 (19)	1-9/16 (40)	1-11/16 (43)
2	13/32 (10)	3/4 (19)	3-1/16 (78)	3-3/16 (81)
3	13/32 (10)	3/4 (19)	4-9/16 (116)	4-11/16 (119)
4	13/32 (10)	3/4 (19)	6-1/16 (154)	6-3/16 (157)
5	13/32 (10)	3/4 (19)	7-9/16 (192)	7-11/16 (195)
6	13/32 (10)	3/4 (19)	9-1/16 (230)	9-3/16 (233)
7	13/32 (10)	3/4 (19)	10-9/16 (268)	10-11/16 (271)
8	13/32 (10)	3/4 (19)	12-1/16 (306)	12-3/16 (310)

1910K (1" Spacing)				
SLOT	A	B	C	D
1	13/32 (10)	1 (25)	1-13/16 (46)	1-15/16 (49)
2	13/32 (10)	1 (25)	3-9/16 (90)	3-11/16 (94)
3	13/32 (10)	1 (25)	5-5/16 (135)	5-7/16 (138)
4	13/32 (10)	1 (25)	7-1/16 (179)	7-3/16 (183)
5	13/32 (10)	1 (25)	8-13/16 (224)	8-15/16 (227)
6	13/32 (10)	1 (25)	10-9/16 (268)	10-11/16 (271)
7	13/32 (10)	1 (25)	12-5/16 (313)	12-7/16 (316)
8	13/32 (10)	1 (25)	14-1/16 (357)	14-3/16 (360)

1915K (1-1/2" Spacing)				
SLOT	A	B	C	D
1	13/32 (10)	1-1/2 (38)	2-5/16 (59)	2-7/16 (62)
2	13/32 (10)	1-1/2 (38)	4-9/16 (116)	4-11/16 (119)
3	13/32 (10)	1-1/2 (38)	6-13/16 (173)	6-15/16 (176)
4	13/32 (10)	1-1/2 (38)	9-1/16 (230)	9-3/16 (233)

1920K (2" Spacing)				
SLOT	A	B	C	D
1	13/32 (10)	2 (51)	2-13/16 (71)	2-15/16 (75)
2	13/32 (10)	2 (51)	5-9/16 (141)	5-11/16 (144)
3	13/32 (10)	2 (51)	8-5/16 (211)	8-7/16 (214)
4	13/32 (10)	2 (51)	11-1/16 (281)	11-3/16 (284)

NOTES :

- Individual Sections Range from 12" (305) to 72" (1829) Long. Longer Units will Consist of Sections Butted Together with Alignment Pins
- See Form DS0710 for Length Details
- See Form DS0711 for 1900 Boot Information
- Construction is Extruded Aluminum with Steel Clips
- Standard Finish : Straight Frame - White, Blades - Back
- Standard Finish : Curved Frame - White, Deflectors - White

OPTIONS :

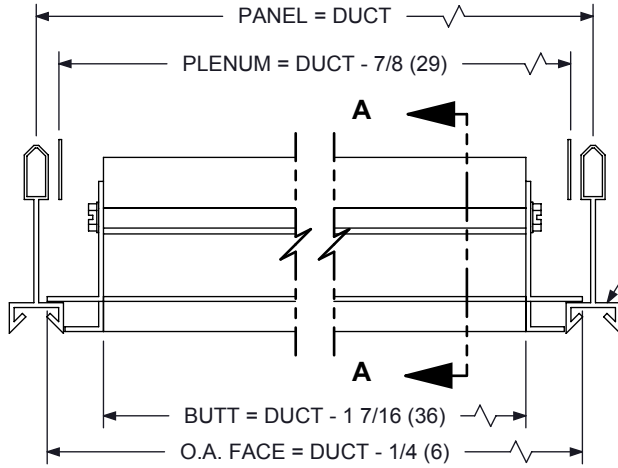
- STEEL BLANK OFF STRIPS
- NO BLADES

**DIMENSIONS GIVEN AS
INCHES (MM)**

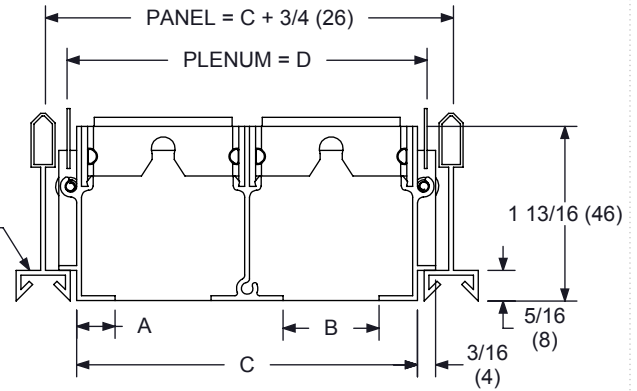
1900 SERIES LINEAR SLOT DIFFUSER FRAMESTYLE 'K' NARROW T-BAR CEILING MOUNT

JOB NAME _____
ENGINEER _____
CONTRACTOR _____
TAG _____

SUBMITTAL SHEET



SIDE VIEW



**SECTION A-A
NO BLADES**

1950K (1/2" Spacing)				
SLOT	A	B	C	D
1	13/32 (10)	1/2 (13)	1-5/16 (33)	1-7/16 (37)
2	13/32 (10)	1/2 (13)	2-9/16 (65)	2-11/16 (68)
3	13/32 (10)	1/2 (13)	3-13/16 (97)	3-15/16 (100)
4	13/32 (10)	1/2 (13)	5-1/16 (129)	5-3/16 (132)
5	13/32 (10)	1/2 (13)	6-5/16 (160)	6-7/16 (164)
6	13/32 (10)	1/2 (13)	7-9/16 (192)	7-11/16 (195)
7	13/32 (10)	1/2 (13)	8-13/16 (224)	8-15/16 (227)
8	13/32 (10)	1/2 (13)	10-1/16 (256)	10-3/16 (259)

1975K (3/4" Spacing)				
SLOT	A	B	C	D
1	13/32 (10)	3/4 (19)	1-9/16 (40)	1-11/16 (43)
2	13/32 (10)	3/4 (19)	3-1/16 (78)	3-3/16 (81)
3	13/32 (10)	3/4 (19)	4-9/16 (116)	4-11/16 (119)
4	13/32 (10)	3/4 (19)	6-1/16 (154)	6-3/16 (157)
5	13/32 (10)	3/4 (19)	7-9/16 (192)	7-11/16 (195)
6	13/32 (10)	3/4 (19)	9-1/16 (230)	9-3/16 (233)
7	13/32 (10)	3/4 (19)	10-9/16 (268)	10-11/16 (271)
8	13/32 (10)	3/4 (19)	12-1/16 (306)	12-3/16 (310)

1910K (1" Spacing)				
SLOT	A	B	C	D
1	13/32 (10)	1 (25)	1-13/16 (46)	1-15/16 (49)
2	13/32 (10)	1 (25)	3-9/16 (90)	3-11/16 (94)
3	13/32 (10)	1 (25)	5-5/16 (135)	5-7/16 (138)
4	13/32 (10)	1 (25)	7-1/16 (179)	7-3/16 (183)
5	13/32 (10)	1 (25)	8-13/16 (224)	8-15/16 (227)
6	13/32 (10)	1 (25)	10-9/16 (268)	10-11/16 (271)
7	13/32 (10)	1 (25)	12-5/16 (313)	12-7/16 (316)
8	13/32 (10)	1 (25)	14-1/16 (357)	14-3/16 (360)

1915K (1-1/2" Spacing)				
SLOT	A	B	C	D
1	13/32 (10)	1-1/2 (38)	2-5/16 (59)	2-7/16 (62)
2	13/32 (10)	1-1/2 (38)	4-9/16 (116)	4-11/16 (119)
3	13/32 (10)	1-1/2 (38)	6-13/16 (173)	6-15/16 (176)
4	13/32 (10)	1-1/2 (38)	9-1/16 (230)	9-3/16 (233)

1920K (2" Spacing)				
SLOT	A	B	C	D
1	13/32 (10)	2 (51)	2-13/16 (71)	2-15/16 (75)
2	13/32 (10)	2 (51)	5-9/16 (141)	5-11/16 (144)
3	13/32 (10)	2 (51)	8-5/16 (211)	8-7/16 (214)
4	13/32 (10)	2 (51)	11-1/16 (281)	11-3/16 (284)

NOTES :

- Individual Sections Range from 12" (305) to 72" (1829) Long. Longer Units will Consist of Sections Butted Together with Alignment Pins
- See Form DS0710 for Length Details
- See Form DS0711 for 1900 Boot Information
- Construction is Extruded Aluminum with Steel Clips
- Standard Finish : Straight Frame - White, Blades - Back
- Standard Finish : Curved Frame - White, Deflectors - White

OPTIONS :

- STEEL BLANK OFF STRIPS
- WITH BLADES

**DIMENSIONS GIVEN AS
INCHES (MM)**