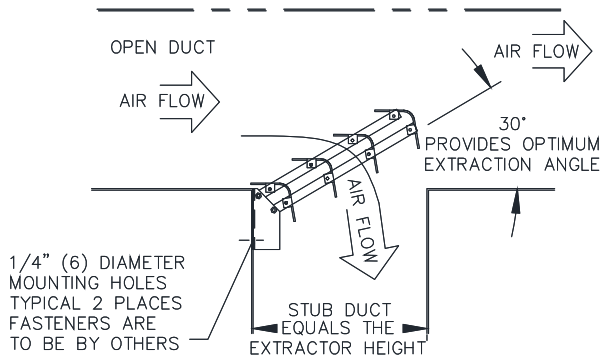
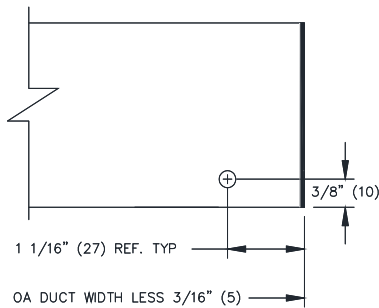


**EX8 SERIES**  
**CURVED BLADE DUCT EXTRACTORS**

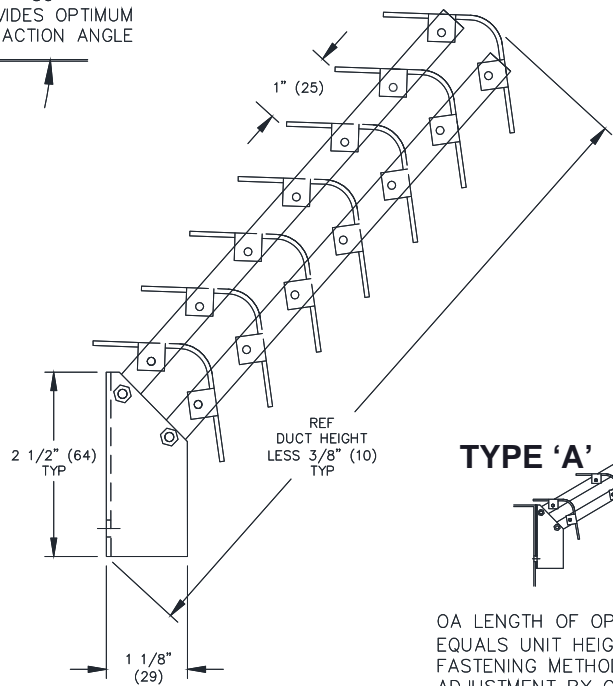
**SUBMITTAL SHEET**



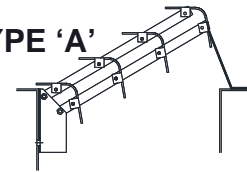
**INSTALLATION NOTES**



**MOUNTING PLATE DETAIL NTS**  
EXTRACTOR NOT SHOWN FOR CLARITY

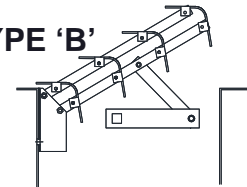


**TYPE 'A'**



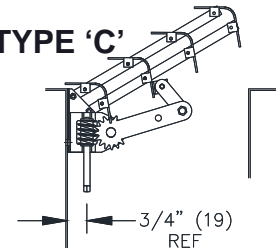
O.A. LENGTH OF OPERATOR EQUALS UNIT HEIGHT PLUS 6"(152) FASTENING METHODS AND FINAL ADJUSTMENT BY OTHERS ON SITE

**TYPE 'B'**



FASTENING METHODS BY OTHERS SEE NOTE BELOW

**TYPE 'C'**



**OPERATOR OPTIONS**

**NOTES :**

1. **EX8** 24GA. STEEL BLADES ARE SPACED ON 1" (25) CENTERS
2. AVAILABLE FINISHES :  
ALUMICAN / BLACK / BRITISH WHITE / OFF WHITE / MILL

**OPERATOR OPTIONS :**

- TYPE 'A'** MANUAL ADJUSTING ARM
- TYPE 'B'** ADAPTER FOR RIGHT ANGLE REMOTE CONTROL. OPERATOR SHIPS UNATTACHED. LOCATION TO BE DETERMINED ON SITE.
- TYPE 'C'** PROVIDES A WORM GEAR MECHANISM FOR ADJUSTMENT THROUGH FACE OF GRILLE.

**DIMENSIONS ARE GIVEN AS INCHES (MM)**