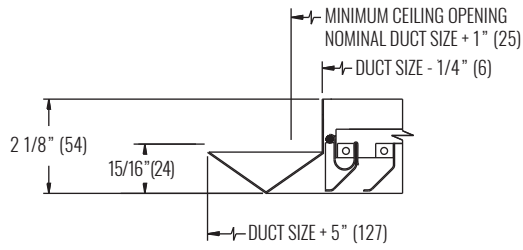


1240, 51240 SERIES

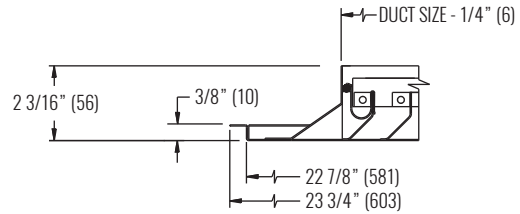
Diffuser | Modular Core



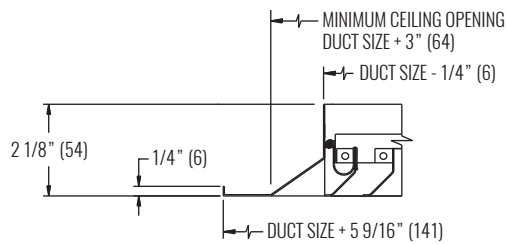
DIMENSIONAL DATA



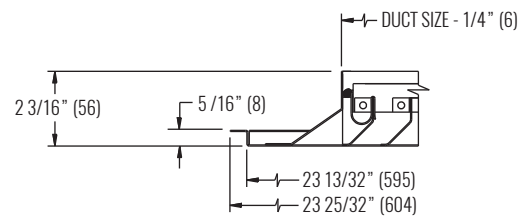
F21
SURFACE MOUNT - BEVELED



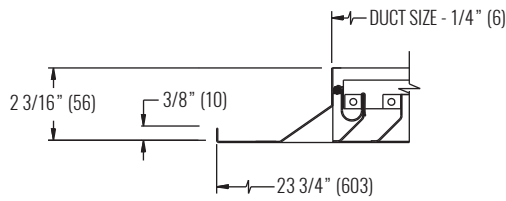
F30
DROP FACE



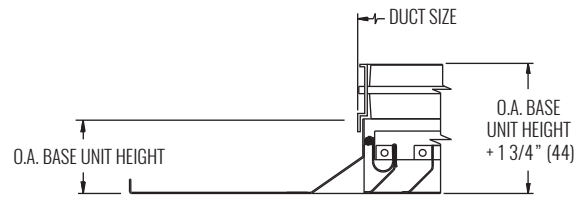
F22
SURFACE MOUNT - FLAT



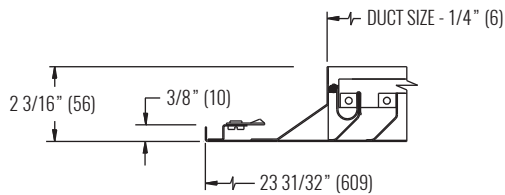
F98
NARROW-T



F23
LAY-IN T-BAR



DAMPER DETAIL

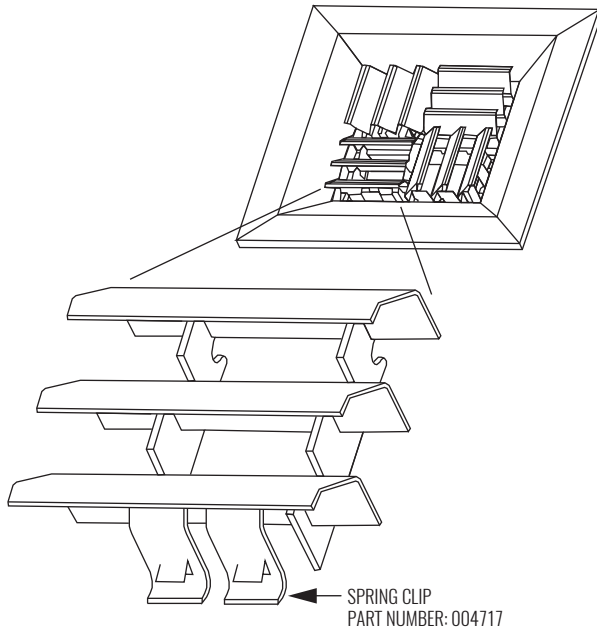


F29
CAMLOCK

NECK SIZE	AVAILABLE NECK SIZES					
	FRAME STYLE					
	SURFACE MOUNT		24" X 24" LAY-IN PANEL			
	F21	F22	F23	F29	F30	F98
6" x 6" (152 x 152)	•	•	•	•	•	•
8" x 8" (203 x 203)	•	•	•	•	•	•
10" x 10" (254 x 254)	•	•	•	•	•	•
12" x 12" (305 x 305)	•	•	•	•	•	•
14" x 14" (356 x 356)	•	•	•	•	•	•
16" x 16" (406 x 406)	•	•	•	•	•	•
18" x 18" (457 x 457)	•	•	•	•	•	•
20" x 20" (508 x 508)	•	•	•			
22" x 22" (559 x 559)	•	•				
24" x 24" (610 x 610)	•	•				

NOTES: Dimensions in parentheses are mm.
Dot indicates available neck sizes.

DIMENSIONAL DATA



To remove core, apply pressure towards the spring clip. When it has compressed completely, lift notched end of core away from frame rail.

NECK SIZE	CORE WIDTH	NO. OF BLADES	PART NUMBER
6" x 6" (152 x 152)	2.75"	3	0989800606
8" x 8" (203 x 203)	3.75"	4	0989800808
10" x 10" (254 x 254)	4.75"	5	0989801010
12" x 12" (305 x 305)	5.75"	6	0989801212
14" x 14" (356 x 356)	6.75"	7	0989801414
16" x 16" (406 x 406)	7.75"	8	0989801616
18" x 18" (457 x 457)	8.75"	9	0989801818
20" x 20" (508 x 508)	9.75"	10	0989802020
22" x 22" (559 x 559)	10.75"	11	0989802222
24" x 24" (610 x 610)	11.75"	12	0989802424

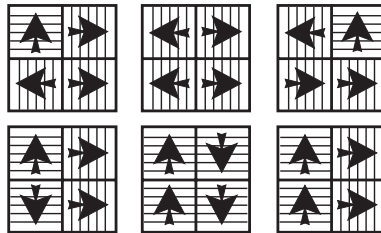
NOTE: Listed core assembly part numbers work on 1240, 1240P, and 1240PE series.

DISCHARGE AIR PATTERNS

**1 CORE THROW
(4-WAY THROW)**



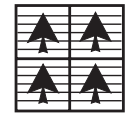
**2 CORE THROW
(2 OR 3-WAY THROW)**



**3 CORE THROW
(2-WAY THROW)**



**4 CORE THROW
(1-WAY THROW)**



NOTE: Reference page D1-3 for core detail.