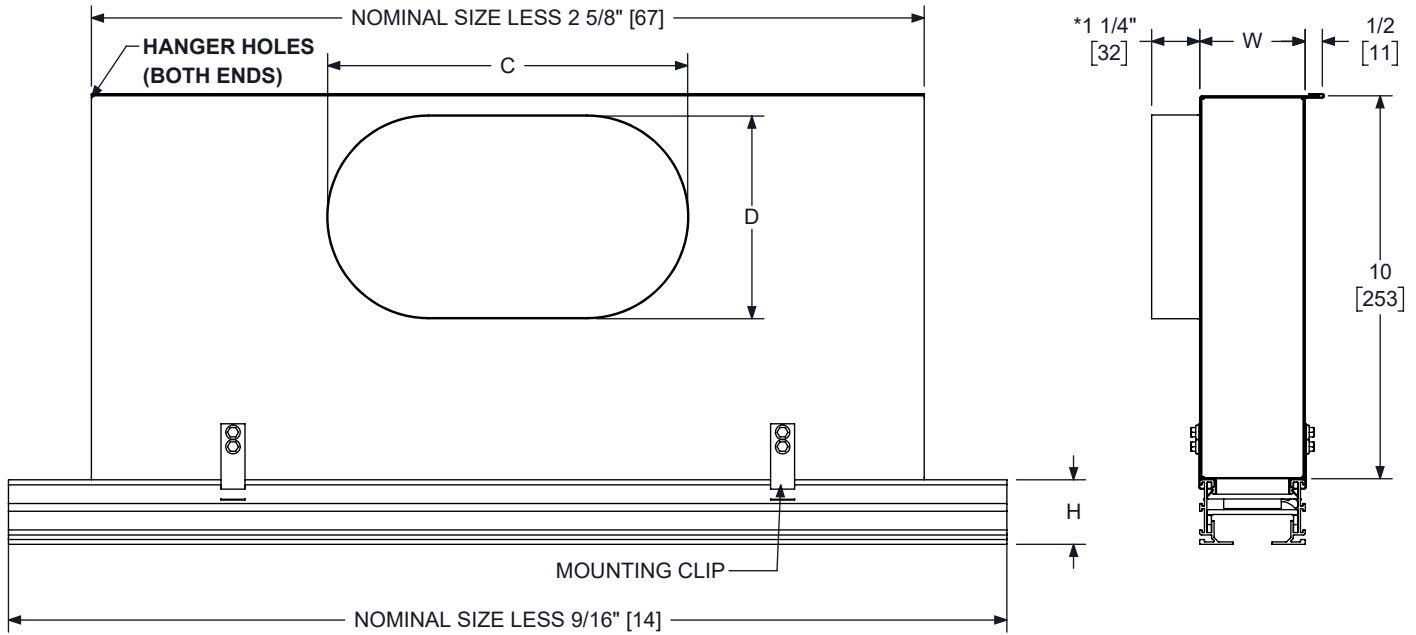


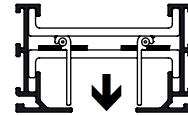
DESIGNFLO™ DFNT PLENUM BOOT
9/16" T-BAR CEILING DIFFUSER APPLICATION
SUBMITTAL SHEET

DFNT NOTES:

- PLENUM IS MILL FINISH GALVANIZED STEEL
- STANDARD FACE FINISH IS #44 WHITE WITH FLAT BLACK INTERIOR
- UNIT IS ONLY OFFERED IN FRAME STYLE AA
- UNIT COMES WITH END PLATE ON BOTH ENDS
- UNIT TO BE INSTALLED IN 9/16" T-BAR CEILING
- UNIT MEANT TO INSTALL/ FALL IN BETWEEN T-BARS

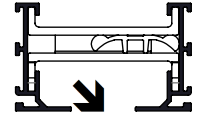
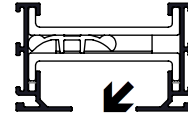
ACCESSORY OPTIONS:

- FRAME AA
- 1/4" [6], 2LB DENSITY FIBERGLASS INSULATION
- 1/4" [6], CLOSED CELL FIBER FREE INSULATION
- *QUADRANT DAMPER - ADDS 6" [152] TO INLET DEPTH. SEE FORM GC0114
- ONE SLOT DETAILS - SEE FORM GC0100
- TWO SLOT DETAILS - SEE FORM GC0102
- SC - SPLINE CLIP - SEE FORM GC0107
- SS - SPLINE SUPPORT BRACKET - SEE FORM GC0107
- US - UPPER SUPPORT BRACKET - SEE FORM GC0107

- VT**
FIXED BLADES
FRAME AA ONLY



- HT**
ADJUSTABLE
FRAME AA ONLY



INLET SIZE	C	D
<input type="checkbox"/> 6" OVAL	6 1/4 [159]	5 1/4 [133]
<input type="checkbox"/> 8" OVAL	9 3/8 [238]	5 1/4 [133]
<input type="checkbox"/> 10" OVAL	12 1/2 [318]	5 1/4 [133]
<input type="checkbox"/> 12" OVAL	14 1/8 [359]	7 7/8 [200]

 DIMENSIONS ARE GIVEN AS
 INCHES [MM]

MODEL	H	ONE SLOT		TWO SLOT		NOMINAL SIZE	UNIT LENGTH	PLENUM LENGTH
		1 W	2AB W	1 W	2AB W			
<input type="checkbox"/> DFNT10	1 11/16 [43]	2 3/4 [70]	6 1/16 [154]			24 [610] 48 [1219]	23 7/16 [595] 47 7/16 [1205]	21 3/8 [543] 45 3/8 [1153]
<input type="checkbox"/> DFNT15	1 11/16 [43]	3 3/4 [95]	8 1/16 [205]					
<input type="checkbox"/> DFNT20	1 11/16 [43]	4 3/4 [121]	10 1/16 [256]					
<input type="checkbox"/> DFNT25	2 5/16 [59]	5 3/4 [146]	12 1/16 [306]					
<input type="checkbox"/> DFNT30	2 5/16 [59]	6 3/4 [171]	14 1/16 [357]					