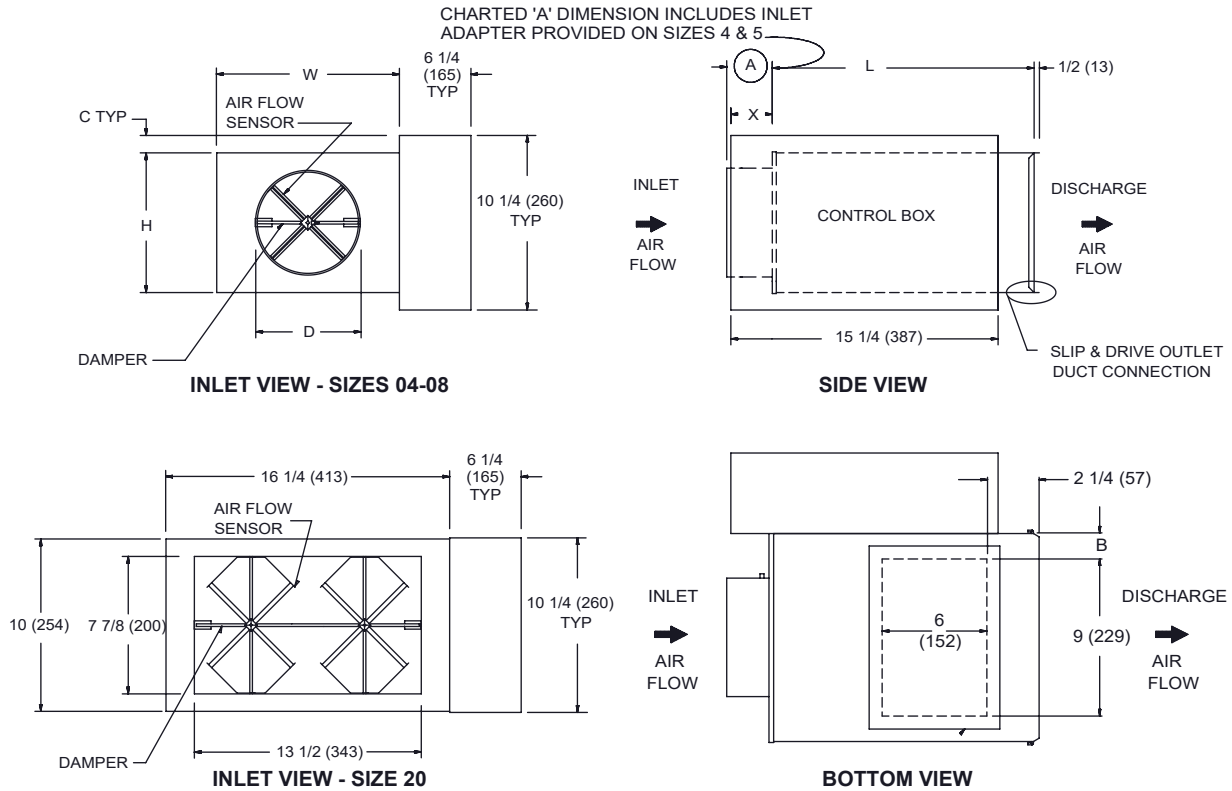


LMHS LOW PROFILE

SUBMITTAL SHEET



STANDARD FEATURES:

- 22 Ga. Zinc coated steel construction.
- **NEMA 1** steel control enclosure for electric or electronic components
- 1/2" thick dual density fiberglass insulation meeting **NFPA 90A** and **UL 181** safety requirements.
- Four quadrant averaging cross flow sensor
- Variety of electric, analog, and digital control packages for pressure dependent and pressure independent systems.
- **ETL** listed - Adherence to **UL 429** for electrically operated valves.
- **AHRI** certified sound ratings

NOTE: Right hand configuration shown, left hand available.

DIMENSIONS ARE GIVEN AS INCHES (MM)

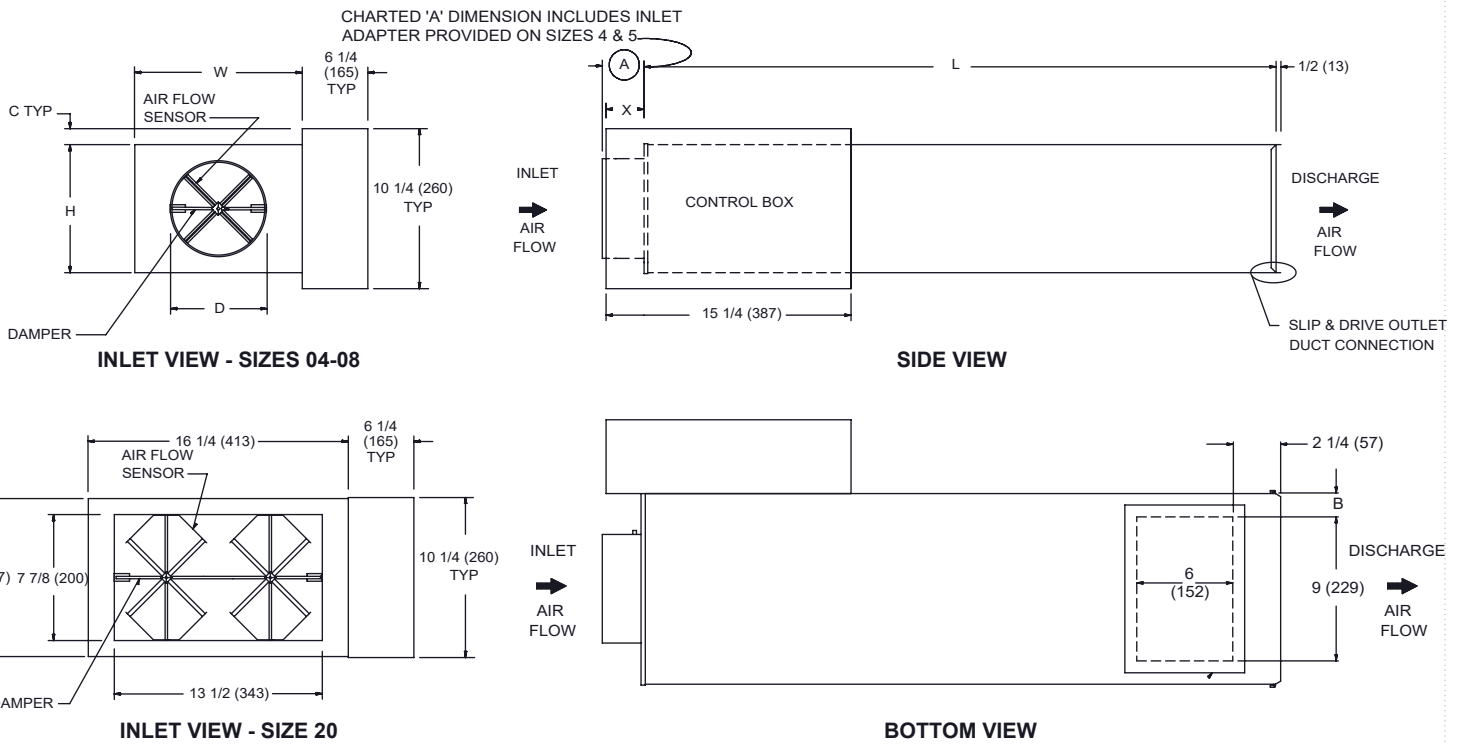
OPTIONAL FEATURES:

- 20 Ga. Zinc coated steel construction
- Liners:
 - 1/2" dual density fiberglass
 - 1" dual density fiberglass
 - Perforated double wall 1/2"
 - Perforated double wall 1"
 - 1/2" Cellular - fibre free
- None
- Steriliner
- Sterilwall 1/2"
- Sterilwall 1"
- 1" Cellular - fibre free
- Linear averaging sensor.
- 24 Volt transformer
- Disconnect switch for electronic controls
- Dust tight control enclosure.
- Left hand control enclosure.
- Right hand control enclosure.
- Bottom access panel
- Cam lock bottom access panel
- Hanger Brackets

INLET SIZE	NOM MAX CFM(L/s)	L	W	H	A	B	C	D	X
4	230 (109)	15 1/2 (394)	12 (305)	8 (203)	5 3/8 (136)	1 1/2 (38)	1 1/8 (54)	3 7/8 (98)	2 5/8 (67)
5	360 (170)	15 1/2 (394)	12 (305)	8 (203)	5 3/8 (136)	1 1/2 (38)	1 1/8 (54)	4 7/8 (124)	2 5/8 (67)
6	520 (245)	15 1/2 (394)	12 (305)	8 (203)	3 3/8 (86)	1 1/2 (38)	1 1/8 (54)	5 7/8 (149)	2 5/8 (67)
7	710 (335)	15 1/2 (394)	12 (305)	10 (254)	3 3/8 (86)	1 1/2 (38)	1/8 (3)	6 7/8 (175)	2 5/8 (67)
8	925 (437)	15 1/2 (394)	12 (305)	10 (254)	3 3/8 (86)	1 1/2 (38)	1/8 (3)	7 7/8 (200)	2 5/8 (67)
20	2100 (991)	15 1/2 (394)	16 1/4 (406)	10 (254)	2 7/8 (73)	3 5/8 (92)	1/8 (3)	N/A	2 5/8 (67)

LMHS LOW PROFILE WITH ATTENUATOR

SUBMITTAL SHEET



STANDARD FEATURES:

- 22 Ga. Zinc coated steel construction.
- **NEMA 1** steel control enclosure for electric or electronic components
- 1/2" thick dual density fiberglass insulation meeting **NFPA 90A** and **UL 181** safety requirements.
- Four quadrant averaging cross flow sensor
- Variety of electric, analog, and digital control packages for pressure dependent and pressure independent systems.
- **ETL** listed - Adherence to **UL 429** for electrically operated valves.
- **AHRI** certified sound ratings

NOTE: Right hand configuration shown, left hand available.

DIMENSIONS ARE GIVEN AS INCHES (MM)

OPTIONAL FEATURES:

- 20 Ga. Zinc coated steel construction
- Liners:
 - 1/2" dual density fiberglass
 - 1" dual density fiberglass
 - Perforated double wall 1/2"
 - Perforated double wall 1"
 - 1/2" Cellular - fibre free
- None
- Steriliner
- Sterilwall 1/2"
- Sterilwall 1"
- 1" Cellular - fibre free
- Linear averaging sensor.
- 24 Volt transformer
- Disconnect switch for electronic controls
- Dust tight control enclosure.
- Left hand control enclosure.
- Right hand control enclosure.
- Bottom access panel
 - Cam lock bottom access panel
 - Hanger Brackets

INLET SIZE	NOM MAX CFM(L/s)	L	W	H	A	B	C	D	X
4	230 (109)	39 1/2 (1003)	12 (305)	8 (203)	5 3/8 (136)	1 1/2 (38)	1 1/8 (29)	3 7/8 (98)	2 5/8 (67)
5	360 (170)	39 1/2 (1003)	12 (305)	8 (203)	5 3/8 (136)	1 1/2 (38)	1 1/8 (29)	4 7/8 (124)	2 5/8 (67)
6	520 (245)	39 1/2 (1003)	12 (305)	8 (203)	3 3/8 (86)	1 1/2 (38)	1 1/8 (29)	5 7/8 (149)	2 5/8 (67)
7	710 (335)	39 1/2 (1003)	12 (305)	10 (254)	3 3/8 (86)	1 1/2 (38)	1/8 (3)	6 7/8 (175)	2 5/8 (67)
8	925 (437)	39 1/2 (1003)	12 (305)	10 (254)	3 3/8 (86)	1 1/2 (38)	1/8 (3)	7 7/8 (200)	2 5/8 (67)
20	2100 (991)	39 1/2 (1003)	16 1/4 (406)	10 (254)	2 7/8 (73)	3 5/8 (92)	1/8 (3)	N/A	2 5/8 (67)