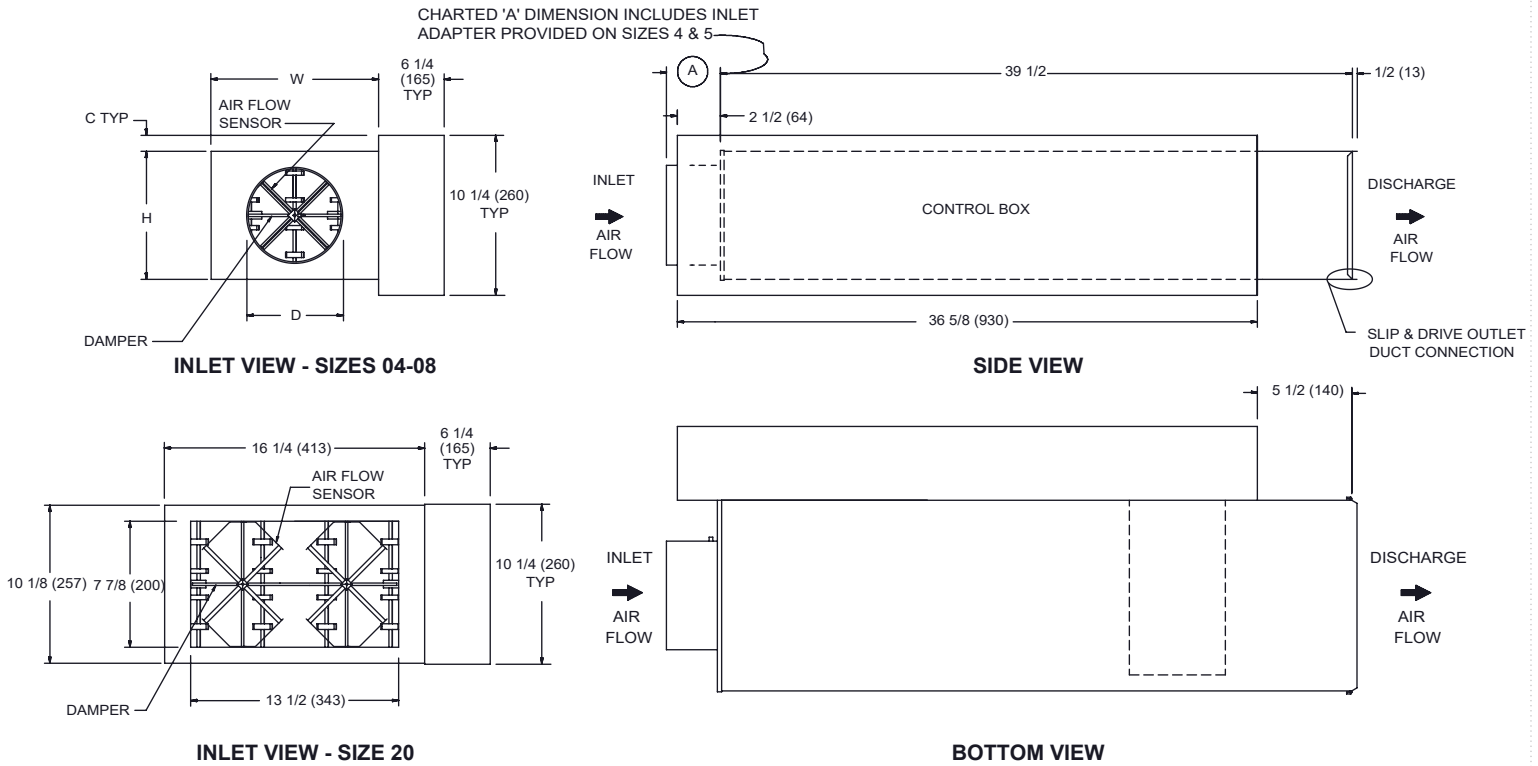


LMHS

LOW PROFILE UNIT

ELECTRIC HEAT - ELECTRIC OR ELECTRONIC CONTROL

SUBMITTAL SHEET



STANDARD FEATURES:

- 22 Ga. Zinc coated steel construction.
- 1/2" thick dual density fiberglass insulation meeting
- **NFPA 90A** and **UL 181** safety requirements.
- Four quadrant averaging cross flow sensor.
- Variety of analog and digital electronic control packages for pressure independent systems.
- **ETL** listed - Adherence to **UL 429** for electrically operated valves
- **ETL** listed electric heater
 1. Electronic damper & reheat controls enclosure.
 2. Magnetic contactors are standard step controllers when electronic control systems are specified.
 3. Automatic reset thermal cutout
 4. Manual reset thermal cutout
 5. Positive pressure air flow switch

NOTE: HORIZONTAL INSTALLATION ONLY

DIMENSIONS ARE GIVEN AS INCHES (MM)

OPTIONAL FEATURES:

- 20 Ga. Zinc coated steel construction
- Liners:
 - 1/2" dual density fiberglass
 - 1" dual density fiberglass
 - Perforated double wall 1/2"
 - Perforated double wall 1"
 - 1/2" Cellular - fibre free
 - None
 - Steriliner
 - Sterilwall 1/2"
 - Sterilwall 1"
 - 1" Cellular - fibre free
- Right hand control & electric heat.
- Left hand control & electric heat.
- Linear averaging sensor.
- Hanger Brackets
- Heater voltages:
 - 120v/1 ϕ
 - 240v/1 ϕ
 - 208v/3 ϕ /3-wire
 - 208v/1 ϕ
 - 277v/1 ϕ
 - 480v/3 ϕ /4-wire
- Mercury contactors
- Dust tight construction
- Heater disconnect switch
- Heater fused disconnect switch
- Fuse block w/ fuses for primary overload protection
- Lineaheat proportional SSR control

INLET SIZE	NOM MAX CFM(L/s)	W	H	A	C	D
4	230 (109)	12 (305)	8 (203)	5 3/8 (136)	1 1/8 (29)	3 7/8 (98)
5	360 (170)	12 (305)	8 (203)	5 3/8 (136)	1 1/8 (29)	4 7/8 (124)
6	520 (245)	12 (305)	8 (203)	3 3/8 (86)	1 1/8 (29)	5 7/8 (149)
7	710 (335)	12 (305)	10 (254)	3 3/8 (86)	1/8 (3)	6 7/8 (175)
8	925 (437)	12 (305)	10 (254)	3 3/8 (86)	1/8 (3)	7 7/8 (200)
20	2100 (991)	16 1/4 (406)	10 (254)	3 3/4 (95)	1/8 (3)	N/A