

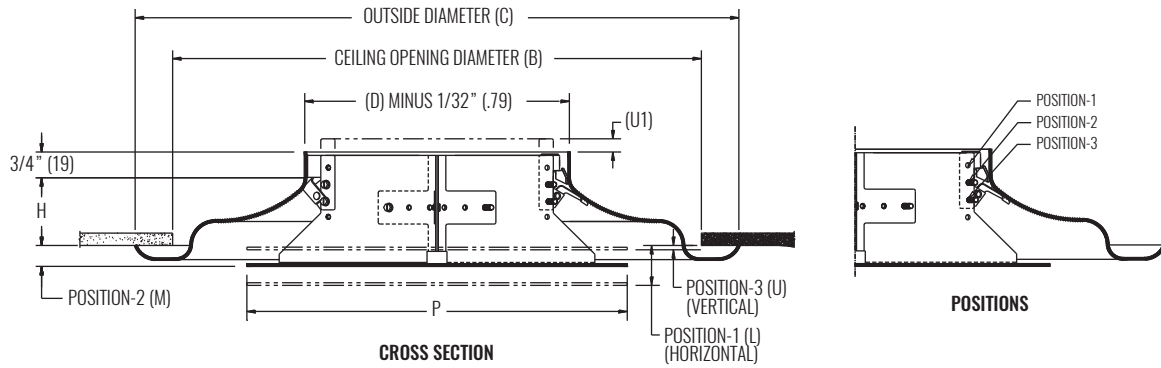
RM2PLQ, RM4PLQ

Round Diffusers, Center Plaque



DIFFUSERS | ROUND

DIMENSIONAL DATA | RM2PLQ



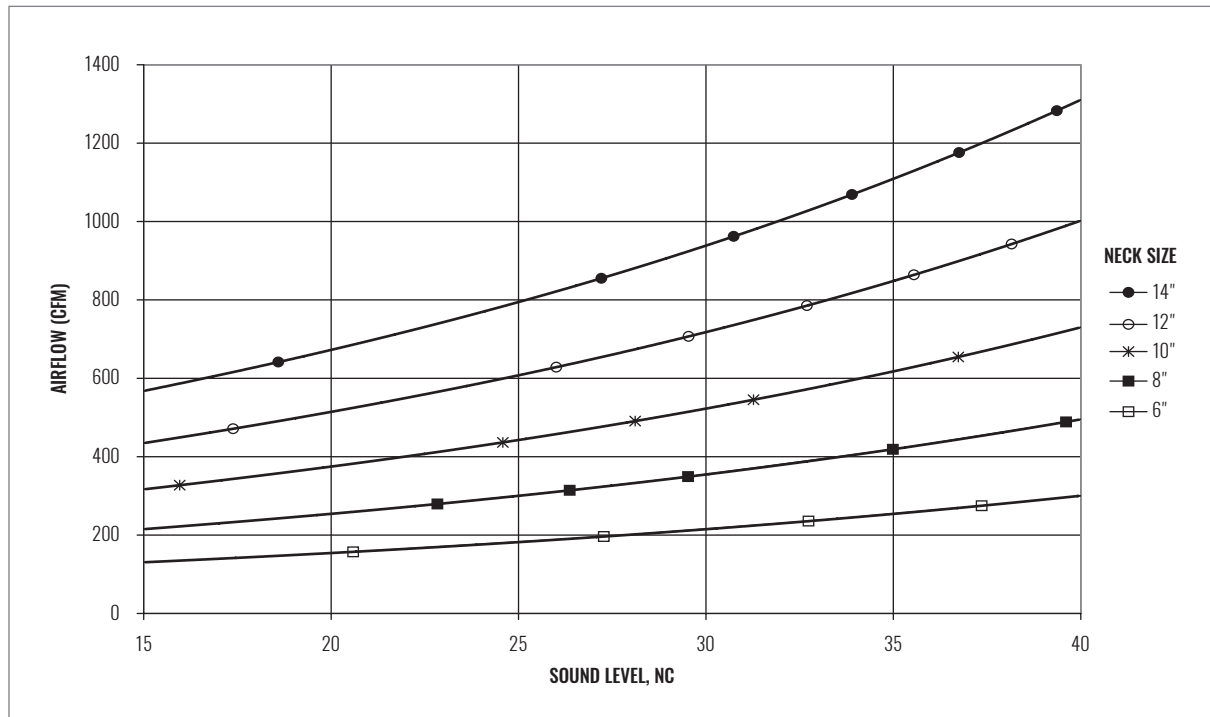
AVAILABLE NECK SIZES								
NOMINAL DUCT DIAMETER	B	C	H	P	U	U1 *	M	L
6"	12" (305)	13 1/2" (343)	1 5/8" (41)	6" (9)	1/16" (2)	1/2" (13)	5/8" (16)	1 3/16" (30)
8"	16" (406)	18" (457)	2 1/8" (54)	12" (305)	3/16" (5)	1/2" (13)	3/4" (19)	1 5/16" (33)
10"	20" (508)	22 1/2" (572)	2 5/8" (67)	15" (381)	0	1/2" (13)	9/16" (14)	1 1/8" (29)
12"	24" (635)	27" (686)	3 1/4" (83)	18" (457)	1/8" (3)	11/16" (17)	5/8" (16)	1 3/8" (35)
14"	28" (711)	31 1/2" (800)	3 3/4" (95)	21" (533)	1/16" (2)	13/16" (21)	13/16" (21)	1 9/16" (40)

NOTES: Unit shipped in position 2. Dimensions in parentheses are millimeters (mm).

* (U1) Extends above the neck when plaque is placed in position 3.

REFERENCE CHART | RM2PLQ

AIRFLOW VS. NC LEVEL (NO DAMPER)



RM2PLQ, RM4PLQ

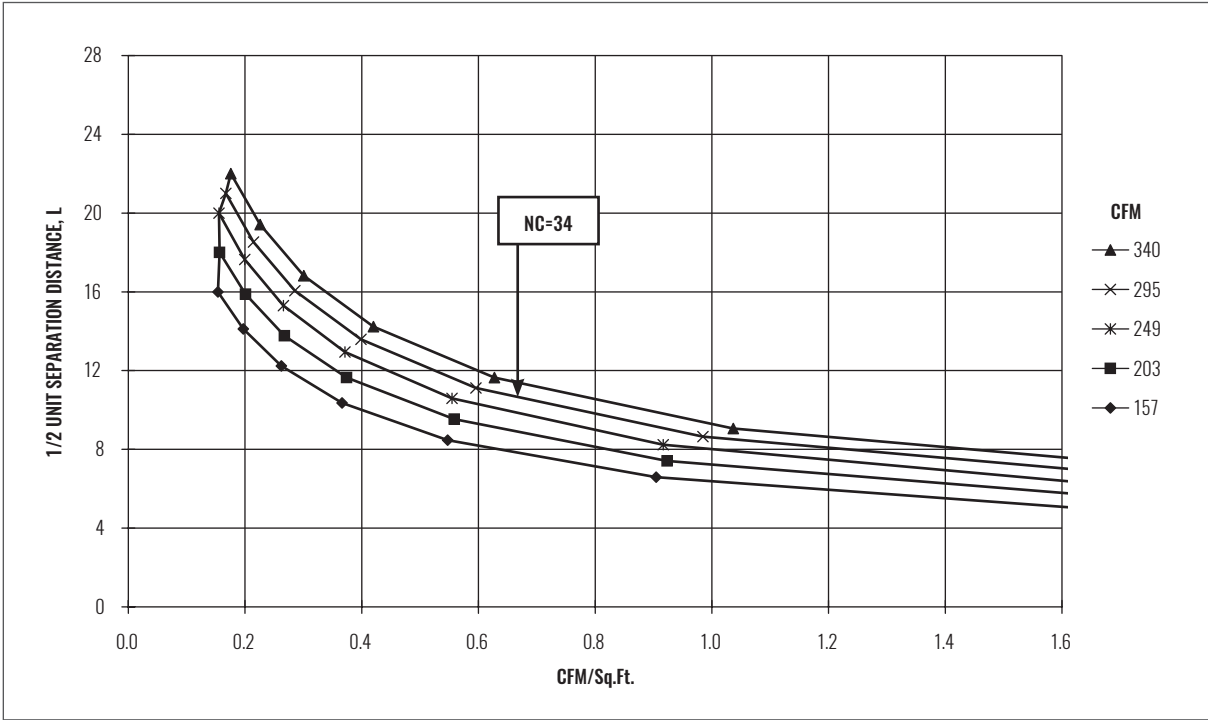
Round Diffusers, Center Plaque



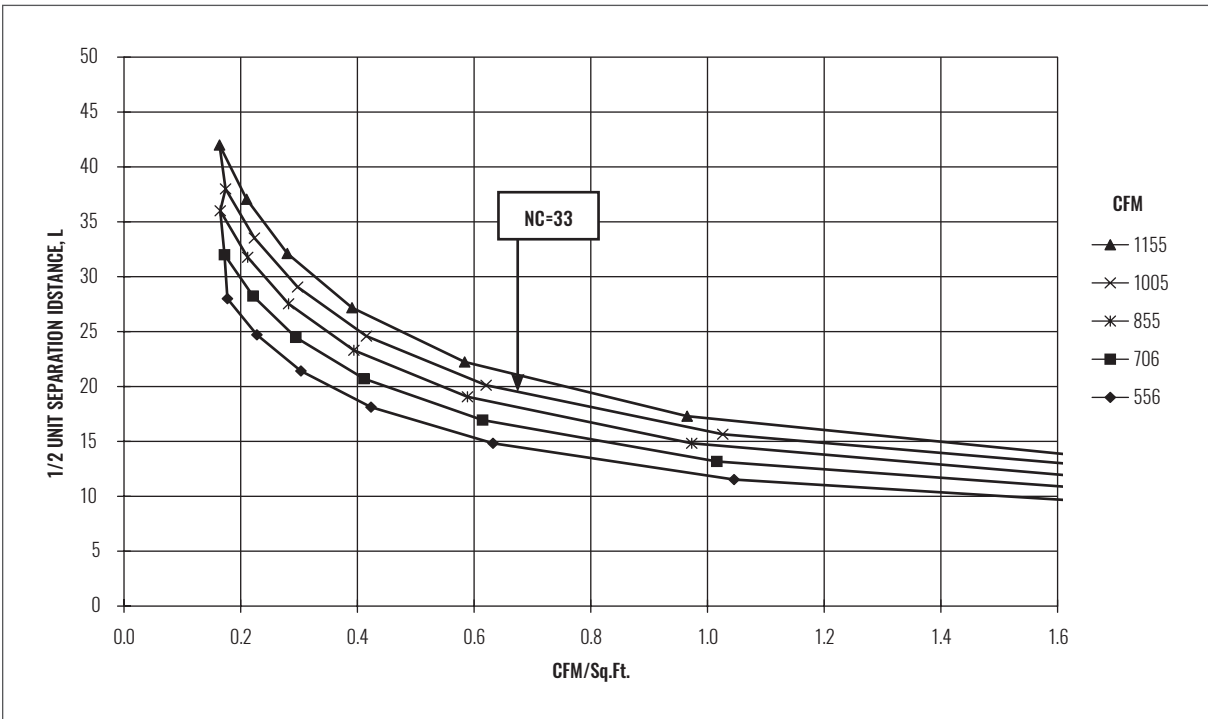
DIFFUSERS | ROUND

ADPI CHARTS | HORIZONTAL THROW

UNIT SPACING FOR 80% ADPI (6" NECK, NO DAMPER)



UNIT SPACING FOR 80% ADPI (14" NECK, NO DAMPER)



NOTES: Charts are at 20 BTUH/ft² loads. See the Engineering section of this catalog for instructions on how to read these charts and additional ADPI information.