

Introduction: CRNRR, 5CRNRR

This high capacity concentric ring nozzle with an integrated round duct reducer is designed to fit cleanly inside the end of spiral or round duct. The diffuser provides a concentrated jet of air, which can be adjusted up to 60° of axial adjustment with 360° of rotation for a variety of directional control settings. The mounting style makes this a great nozzle to use in exposed duct applications.

MODELS

CRNRR - Steel Concentric Ring Nozzle, Round Duct Reducer
 5CRNRR - Aluminum Concentric Ring Nozzle, Round Duct Reducer

FEATURES

- Steel or aluminum construction.
- Directional air pattern control. (60° axial adjustment with 360° of rotation.)
- For use in stub duct applications.

FINISHES

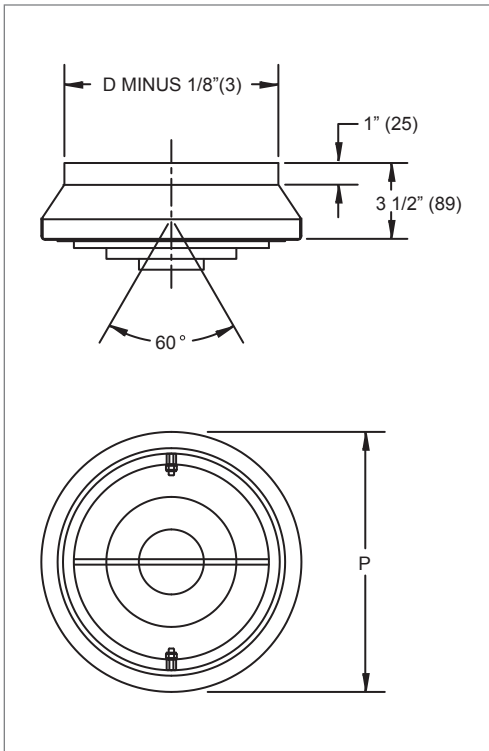
- Standard finish is #44 British White.
- Optional finishes available.



CRNRR (Face & Side View)

CRNRR, 5CRNRR Dimensional Information

CRNRR, 5CRNRR, FACE AND SIDE VIEWS



CRNRR, 5CRNRR, DIMENSIONAL DETAILS

| Nominal Size | Element Size E | Duct Size D | P |
|--------------|----------------|-------------|---------------|
| 6 | 3" (76) | 6" (152) | 8 1/8" (206) |
| 8 | 4 3/8" (111) | 8" (203) | 10 1/8" (257) |
| 10 | 5 3/4" (146) | 10" (254) | 12 1/8" (308) |
| 12 | 7 3/8" (187) | 12" (305) | 14 1/8" (359) |
| 14 | 8 5/8" (219) | 14" (356) | 16 1/8" (410) |
| 16 | 9 3/4" (248) | 16" (406) | 18 1/8" (460) |
| 18 | 10 1/2" (267) | 18" (457) | 20 1/8" (511) |

NOTE: Dimensions in parentheses are mm and rounded to the nearest 1/16".