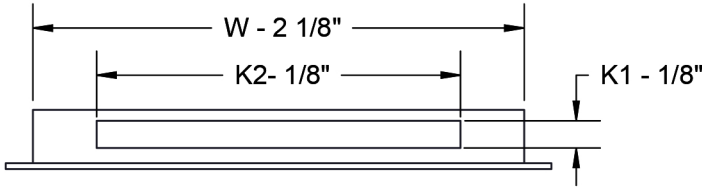
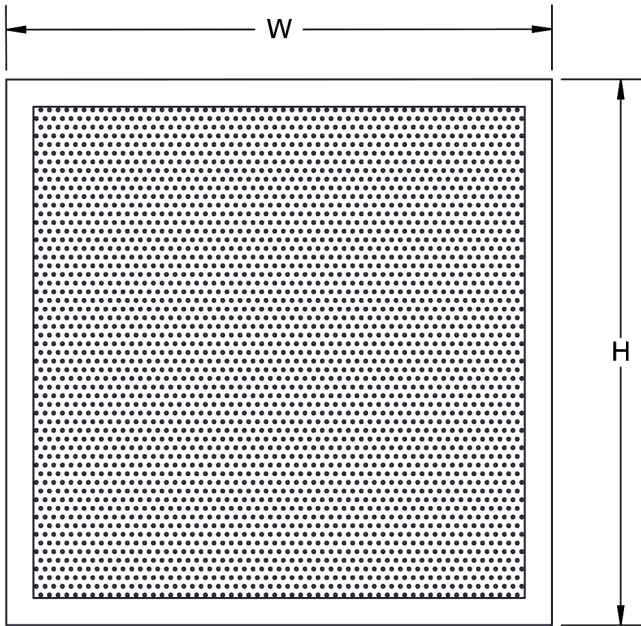


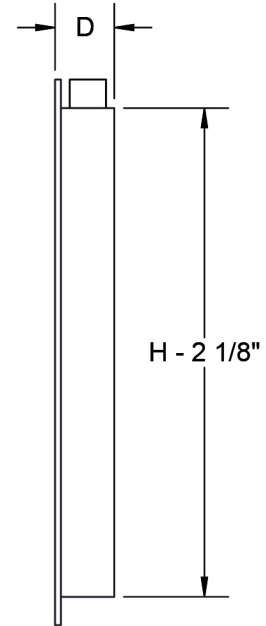
AFE - DISPLACEMENT VENTILATION



TOP VIEW



FRONT VIEW



SIDE VIEW

DIFFUSER DIMENSIONS						STANDARD FEATURES:					
AFE Size (Nominal WxH)	W	H	D	K1	K2	AFE Size (Nominal WxH)	W	H	D	K1	K2
24"x24"	23 5/8"	23 5/8"	2 5/9"	1 1/9"	15 11/16"	23"x30"	23"	30"	3 1/2"	2 1/2"	18"
24"x32"	23 5/8"	31 1/2"	2 15/16"	1 1/2"	15 11/16"	23"x36"	23"	36"	3 1/2"	2 1/2"	18"
24"x39"	23 5/8"	39 3/8"	3 3/4"	2 2/7"	15 11/16"	23"x48"	23"	48"	3 1/2"	2 1/2"	18"
24"x47"	23 5/8"	47 1/4"	4 1/2"	3 1/16"	15 11/16"	24"x30"	24"	30"	3 1/2"	2 1/2"	18"
15"x24"	15"	24"	3 1/2"	2 1/2"	12"	24"x36"	24"	36"	3 1/2"	2 1/2"	18"
15"x30"	15"	30"	3 1/2"	2 1/2"	12"	24"x48"	24"	48"	3 1/2"	2 1/2"	18"
15"x36"	15"	36"	3 1/2"	2 1/2"	12"	30"x24"	30"	24"	3 1/2"	2 1/2"	18"
15"x48"	15"	48"	3 1/2"	2 1/2"	12"	36"x24"	36"	24"	3 1/2"	2 1/2"	18"
23"x24"	23"	24"	3 1/2"	2 1/2"	18"	48"x24"	48"	24"	3 1/2"	2 1/2"	18"

STANDARD FEATURES:

- 20 GA. front panel.
- Horizontal low velocity discharge at floor level.
- Easy integration into wall structure
- Detachable panel enables cleaning of the unit and duct work.
- Rectangular duct connection at top/bottom of the unit.

OPTIONAL FEATURES:

- Finish _____
- Material
 - Galvanized
 - Stainless Steel
- Front Panel Thickness
 - 20 GA. Front Panel
 - 16 GA. Front Panel
- Plenum
 - None (Face Only)
 - Plenum