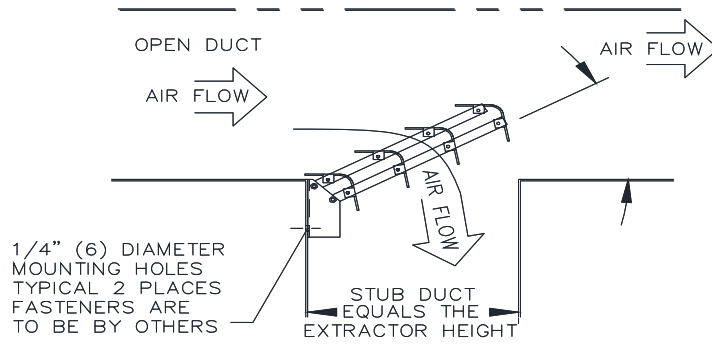
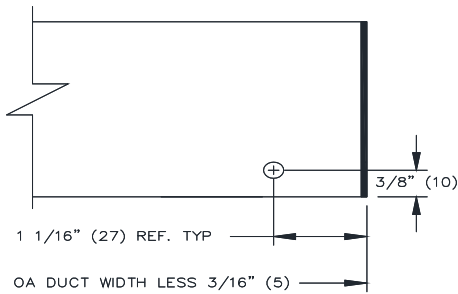


EX88 SERIES
CURVED BLADE DUCT EXTRACTORS

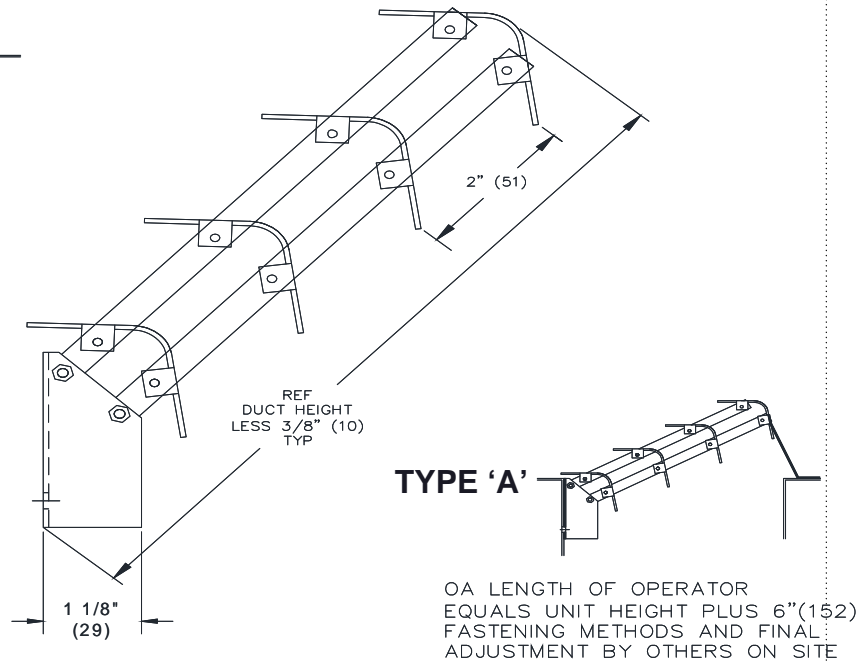
SUBMITTAL SHEET



INSTALLATION NOTES



MOUNTING PLATE DETAIL NTS
EXTRACTOR NOT SHOWN FOR CLARITY



TYPE 'A'

OA LENGTH OF OPERATOR EQUALS UNIT HEIGHT PLUS 6" (152) FASTENING METHODS AND FINAL ADJUSTMENT BY OTHERS ON SITE

TYPE 'B'

FASTENING METHODS BY OTHERS SEE NOTE BELOW

TYPE 'C'

NOTES :

1. EX88 24GA. STEEL BLADES ARE SPACED ON 2" (51) CENTERS
2. AVAILABLE FINISHES :
ALUMICAN / BLACK / BRITISH WHITE / OFF WHITE / MILL

OPERATOR OPTIONS :

- TYPE 'A'** MANUAL ADJUSTING ARM
- TYPE 'B'** ADAPTER FOR RIGHT ANGLE REMOTE CONTROL. OPERATOR SHIPS UNATTACHED. LOCATION TO BE DETERMINED ON SITE.
- TYPE 'C'** PROVIDES A WORM GEAR MECHANISM FOR ADJUSTMENT THROUGH FACE OF GRILLE.

OPERATOR OPTIONS

DIMENSIONS ARE GIVEN AS INCHES (MM)