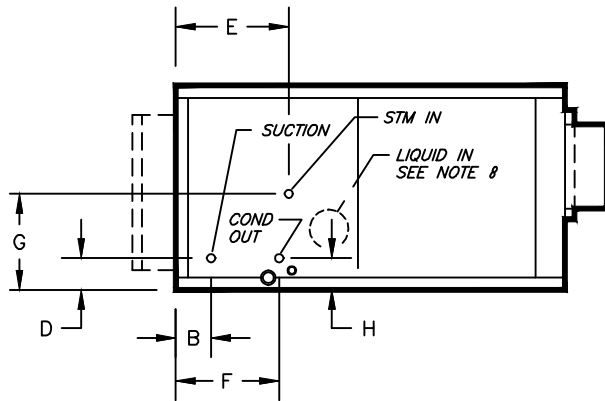
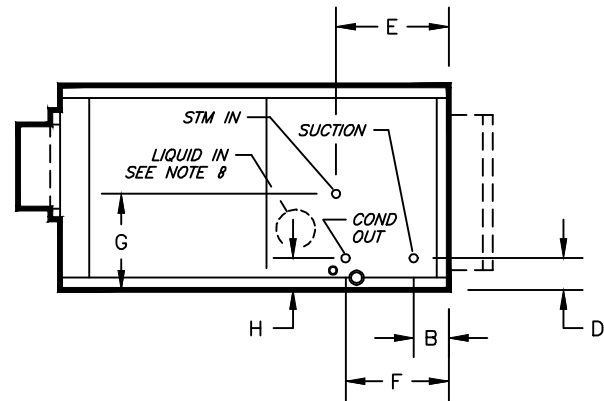
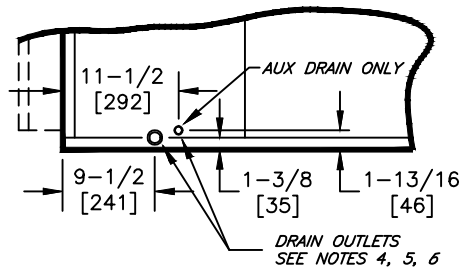


KBH, KBV - HORIZONTAL & VERTICAL BLOWER COIL
 COIL CONNECTION LOCATION - 2 ROW STEAM COIL IN RE-HEAT WITH 4 ROW DX COIL IN COOLING

SUBMITTAL SHEET

RIGHT HAND

LEFT HAND

TYPICAL DRAIN LOCATIONS

RE-HEAT WITH 4 ROW COOLING						
SIZE	STEAM CONNECTION	CONDENSATE CONNECTION	E	F	G	H
08	1-1/8 [29]	7/8 [23]	13 [330]	10 [254]	10-1/4 [261]	2-3/4 [70]
12						
16	1-3/8 [35]	1-1/8 [29]	13-1/8 [333]		11-1/2 [293]	2-7/8 [74]
20					12-3/4 [324]	
30	1-5/8 [42]			9-7/8 [251]	12-3/4 [324]	
40	2-1/8 [54]	1-3/8 [35]	13-1/4 [337]	9-3/4 [248]	14 [356]	3 [77]

NOTES:

- ALL DIMENSIONS ARE INCHES [MM]
- ALL DIMENSIONS ARE $\pm 1/2"$ [13]
- METRIC VALUES ARE SOFT CONVERSION
- STANDARD GALVANIZED IAQ DRAIN PAN HAS 1-1/8" ODM COPPER CONNECTION ON ONE SIDE. STAINLESS STEEL IAQ DRAIN PAN HAS 1" GALVANIZED SCH. 40 THREADED STEEL CONNECTION ON ONE SIDE ONLY. OPTIONAL AUX CONNECTION IS 3/8" GALVANIZED SCH. 40 THREADED STEEL ON SAME SIDE AS COIL HAND.
- OPTIONAL FLAT GALVANIZED DRAIN PAN HAS 1-1/8" ODM COPPER CONNECTION. OPTIONAL AUX CONNECTION IS 5/8" ODM COPPER. STANDARD AND AUX CONNECTIONS ARE ON BOTH SIDES. CAP UNUSED CONNECTIONS.
- HEATING-ONLY UNITS MAY NOT INCLUDE A DRAIN PAN UNDER HEATING COIL. SEE ACTUAL ORDER DOCUMENTS.
- HORIZONTAL UNIT SHOWN. COIL CONNECTION LOCATIONS ARE TYPICAL FOR VERTICAL UNITS RELATIVE TO LOWER BOTTOM CORNER AT ENTERING AIR SIDE
- CONNECTION AT REFRIGERANT DISTRIBUTOR IS INTERNAL TO ALLOW PROPER INSTALLATION OF EXPANSION VALVE
- ALL CONNECTIONS ARE ODM COPPER SWEAT UNLESS OTHER NOTED
- FIELD PIPING SHOULD BE BASED ON JOB REQUIREMENTS, NOT UNIT CONNECTION SIZE

Revision Date: 12/14

Form: BCS11-WC55

Replaces: NEW