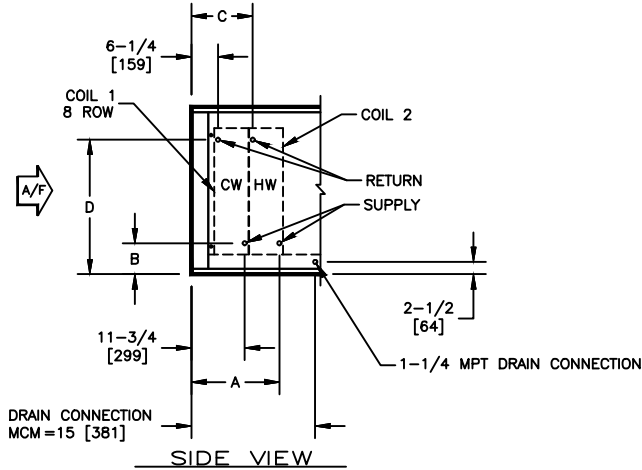


KBM - AIR HANDLER, MODULAR

COIL CONNECTION LOCATION - 8 ROW WATER COIL IN COOLING WITH WATER RE-HEAT COIL

SUBMITTAL SHEET



SIZE	COIL 2							
	1 ROW				2 ROW			
	A	B	C	D	A	B	C	D
02	16-1/2 [420]	6-1/4 [159]	14-1/4 [362]	16-3/4 [425]	16-1/4 [413]	6-1/4 [159]	14-1/4 [362]	16-3/4 [425]
03	16-1/2 [420]	6-1/4 [159]	14-1/4 [362]	16-3/4 [425]	16-1/4 [413]	6-1/4 [159]	14-1/4 [362]	16-3/4 [425]
04	16-1/2 [420]	6-1/2 [165]	14-1/4 [362]	17 [432]	16-1/4 [413]	6-1/2 [165]	14-1/4 [362]	17 [432]
06	16-1/2 [420]	6-1/2 [165]	14-1/4 [362]	24-1/2 [622]	16-1/4 [413]	6-1/2 [165]	14-1/4 [362]	24-1/2 [622]
08	16-1/2 [420]	6-3/4 [171]	14-1/4 [362]	29-3/4 [756]	16-1/4 [413]	6-3/4 [171]	14-1/4 [362]	29-3/4 [756]
10	16-1/2 [420]	7-1/4 [185]	14-1/4 [362]	29-1/2 [749]	16-1/4 [413]	7-1/4 [185]	14-1/4 [362]	29-1/2 [749]
12	16-1/2 [420]	7-1/4 [185]	14-1/4 [362]	35-1/4 [895]	16-1/4 [413]	7-1/4 [185]	14-1/4 [362]	35-1/4 [895]
14	16-1/2 [420]	7-1/4 [185]	14-1/4 [362]	37-3/4 [959]	16-1/4 [413]	7-1/4 [185]	14-1/4 [362]	37-3/4 [959]
17	16-1/2 [420]	7-1/2 [191]	14-1/4 [362]	38 [965]	16-1/4 [413]	7-1/2 [191]	14-1/4 [362]	38 [965]

NOTES:

1. ALL DIMENSIONS ARE INCHES [MM]
2. ALL DIMENSIONS ARE ±1/8" [3]
3. METRIC VALUES ARE SOFT CONVERSION
4. SEE SELECTION PROGRAM FOR CONNECTION SIZES
5. CHILLED WATER COILS ARE ONLY AVAILABLE IN 4, 6, OR 8 ROWS
6. HOT WATER COILS ARE ONLY AVAILABLE IN 1, 2, 3, OR 4 ROWS
7. MODULE MCM CAN HAVE UP TO A TOTAL OF 10 ROWS OF COIL

Revision Date: 12/14	Form: AHMS05-WC12	Replaces: NEW
----------------------	-------------------	---------------