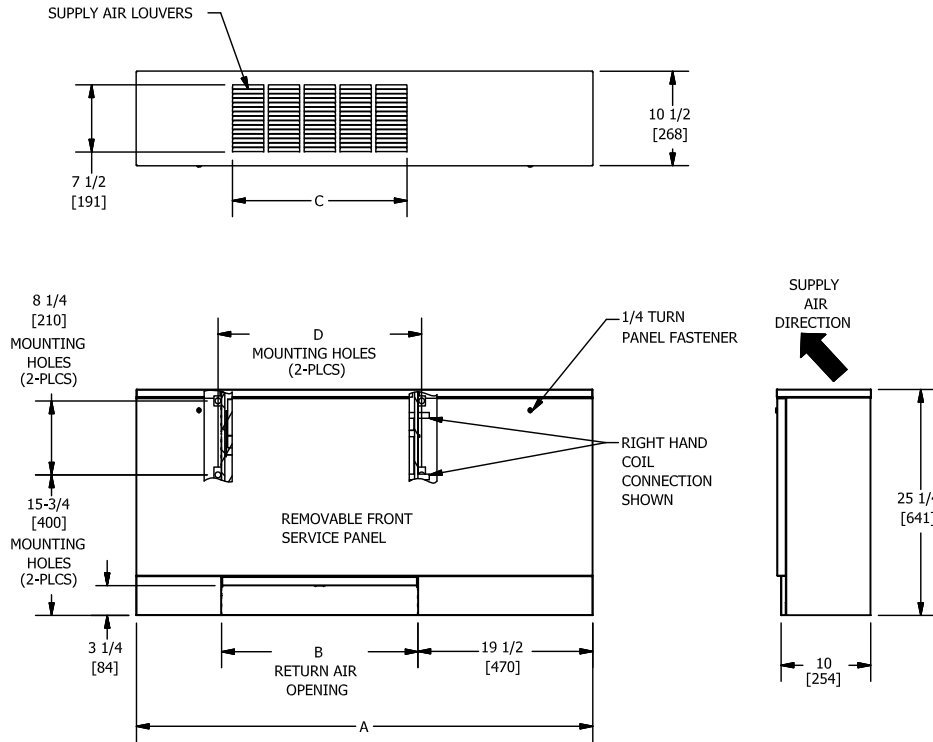


KVFF- VERTICAL FAN COIL
 VERTICAL FAN COIL, EXTENDED

SUBMITTAL SHEET



UNIT MODEL	A	B	C	D
2	50 [1270]	22 [559]	19-1/2 [495]	22-3/4 [578]
3	54 [1371]	26 [660]	23-1/2 [597]	26-3/4 [679]
4	60 [1524]	32 [813]	27-1/2 [699]	32-3/4 [832]
6	70 [1778]	42 [1067]	39-1/2 [1003]	42-3/4 [1086]
8	72 [1829]	44 [1118]	39-1/2 [1003]	44-3/4 [1137]
10	86 [2184]	58 [1473]	55-1/2 [1410]	58-3/4 [1492]
12	94 [2388]	66 [1676]	63-1/2 [1613]	66-3/4 [1695]

NOTES:

1. ALL DIMENSIONS ARE INCHES [MILLIMETERS]. ALL DIMENSIONS ARE +/-1/4" [6MM]. METRIC VALUES ARE SOFT CONVERSION
2. JUNCTION BOX SIZE AND LOCATION VARIES WITH UNIT FEATURES. CONTROL OPTIONS MAY BE LIMITED.
3. PROVIDE SUFFICIENT CLEARANCE TO ACCESS ELECTRICAL CONTROLS AND COMPLY WITH APPLICABLE CODES AND ORDINANCES
4. STANDARD CABINET FINISH IS "PEARL WHITE SATIN"
5. PARAMETRIC DESIGN AVAILABLE TO INCREASE HEIGHT OR WIDTH (SEE PARAMETRIC OFFERINGS DRAWING)
6. FALSE BACK EXTENSION AVAILABLE
7. SOME CONTROL OR PIPING PACKAGE OPTIONS MAY REQUIRE EXTENDED END POCKETS AND/OR EXTENDED DRAIN PANS (SEE EXTENDED END POCKET DRAWING)

Revision Date: 04/15	Form: FCS03-KVFF03	Replaces: NEW
----------------------	--------------------	---------------