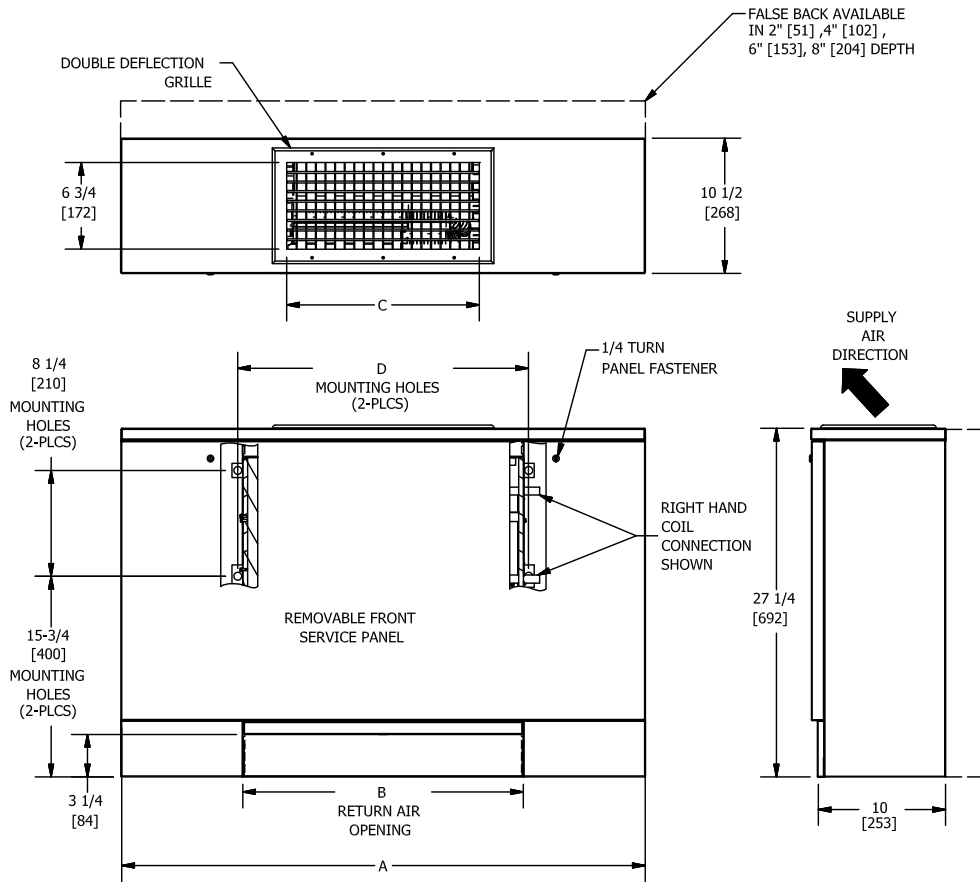


**KVFF- VERTICAL FAN COIL**  
 VERTICAL FAN COIL, DD GRILLE, FALSE BACK

**SUBMITTAL SHEET**



UNIT MODEL	A	B	C	D
2	40 [1016]	22 [559]	15-1/16 [383]	22-3/4 [578]
3	44 [1117]	26 [660]	19-1/16 [484]	26-3/4 [679]
4	50 [1270]	32 [813]	25-1/16 [637]	32-3/4 [832]
6	60 [1524]	42 [1067]	35-1/16 [891]	42-3/4 [1086]
8	62 [1574]	44 [1118]	37-1/16 [941]	44-3/4 [1137]
10	76 [1930]	58 [1473]	51-1/16 [1297]	58-3/4 [1492]
12	84 [2133]	66 [1676]	59-1/16 [1500]	66-3/4 [1695]

- NOTES:
1. ALL DIMENSIONS ARE INCHES [MILLIMETERS]. ALL DIMENSIONS ARE +/-1/4" [6MM]. METRIC VALUES ARE SOFT CONVERSION
  2. JUNCTION BOX SIZE AND LOCATION VARIES WITH UNIT FEATURES. CONTROL OPTIONS MAY BE LIMITED.
  3. PROVIDE SUFFICIENT CLEARANCE TO ACCESS ELECTRICAL CONTROLS AND COMPLY WITH APPLICABLE CODES AND ORDINANCES
  4. STANDARD CABINET FINISH IS "PEARL WHITE SATIN"
  5. PARAMETRIC DESIGN AVAILABLE TO INCREASE HEIGHT OR WIDTH. (SEE PARAMETRIC OFFERINGS DRAWING)
  6. FALSE BACK SHIPS LOOSE FOR FIELD INSTALLATION
  7. SOME CONTROL OR PIPING PACKAGE OPTIONS MAY REQUIRE EXTENDED END POCKETS AND/OR EXTENDED DRAIN PANS (SEE EXTENDED END POCKET DRAWING)

Revision Date: 04/15	Form: FCS03-KVFF09	Replaces: NEW
----------------------	--------------------	---------------