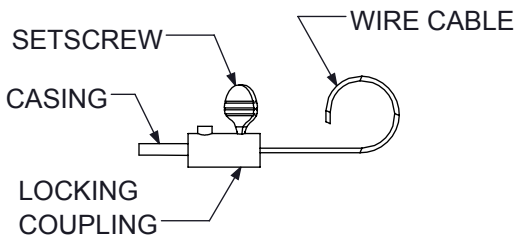


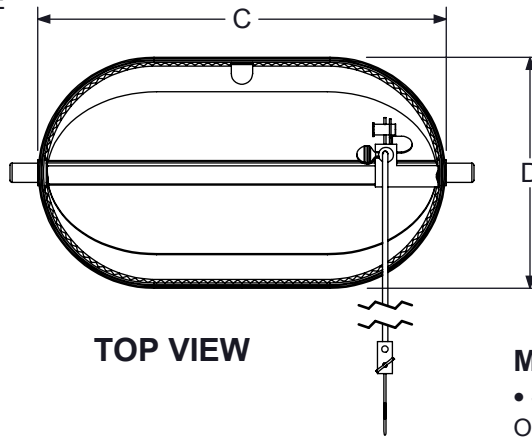
## COD

### CABLE OPERATED DAMPER OVAL CONSTRUCTION

## SUBMITTAL SHEET

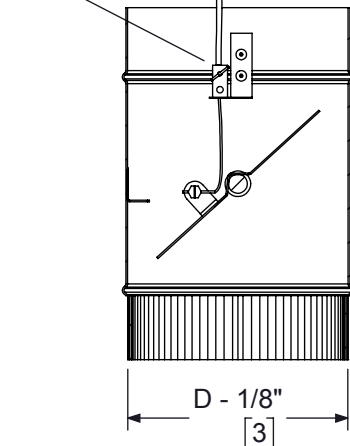
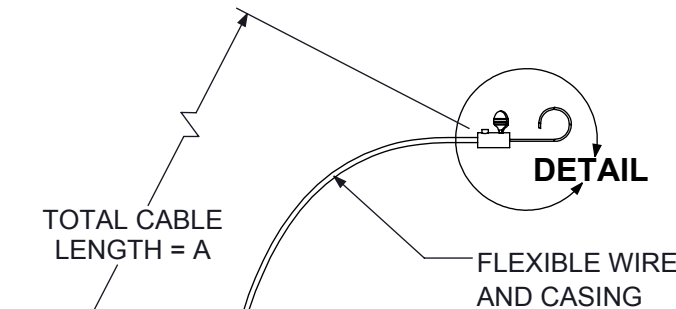


**LOCKING COUPLING AND  
 SETSCREW DETAIL**

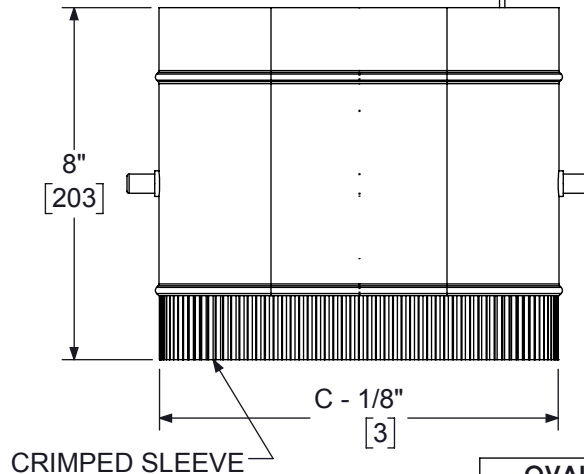


**TOP VIEW**

A - AVAILABLE CABLE LENGTHS
36" [914]
48" [1219]
60" [1524]
72" [1829]
84" [2134]
96" [2438]



**SIDE SECTION VIEW**



**FRONT VIEW**

**MATERIAL:**

- SHELL/BLADE HOUSING CONSTRUCTED OF 24 GA. GALVANIZED STEEL.
- DAMPER BLADE CONSTRUCTED OF 20 GA. GALVANIZED STEEL. SINGLE BLADE WITH "V" FORMED STIFFENER.
- DAMPER BLADE UNDERSIZED 1/4" FROM SHELL DIMENSIONS. MAY RESULT IN LACK OF AIRTIGHT SEAL EVEN WHEN FULLY CLOSED.
- CABLE OPERATED SHAFT IS 1/2" PLATED STEEL.

**NOTES:**

- DAMPER SHIPS SEPARATELY FOR FIELD MOUNTING.
- STANDARD MILL FINISH.
- CABLE OPERATOR EXITS STRAIGHT (UNCRIMPED) END OF SLEEVE FOR STANDARD OVAL CONSTRUCTION COD ONLY. DIRECTION CAN BE SWITCHED UPON REQUEST. CONTACT FACTORY.
- OVAL INLET TYPE
  - B - LINEAR SLOT PLENUMS (DFP, DFB, DFNT, 1900BOOT)
  - P - PLENUM SLOT DIFFUSERS. (PTBA, PTBS, PTBSS, PTBSSFB).

**SEE PAGE 2 FOR  
 ROUND COD**

**DIMENSIONS:**

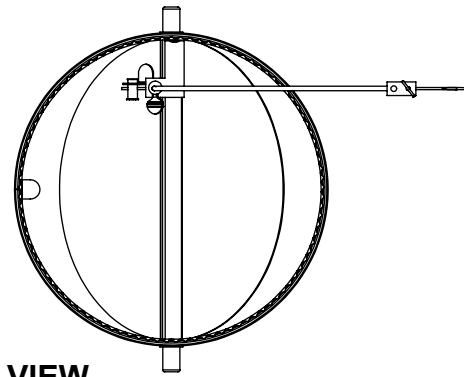
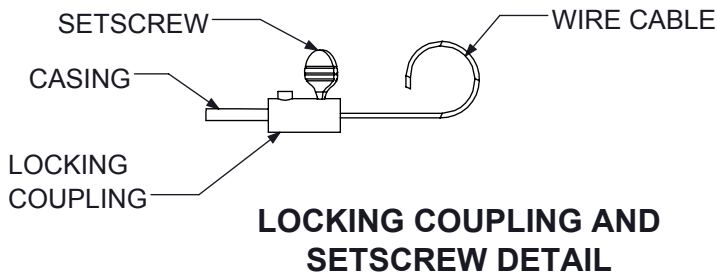
- DIMENSIONS ARE SHOWN AS INCHES [MM] UNLESS NOTED OTHERWISE.

OVAL SIZE	INLET TYPE	C	D
06	B, P	6 1/4" [159]	5 1/4" [133]
08	B, P	9 3/8" [238]	5 1/4" [133]
10	B, P	12 1/2" [317]	5 1/4" [133]
12B (DFP, 1900BOOT)	B	14 1/8" [362]	7 7/8" [203]
12P (Plenum Slots)	P	15 1/2" [394]	5 1/4" [133]

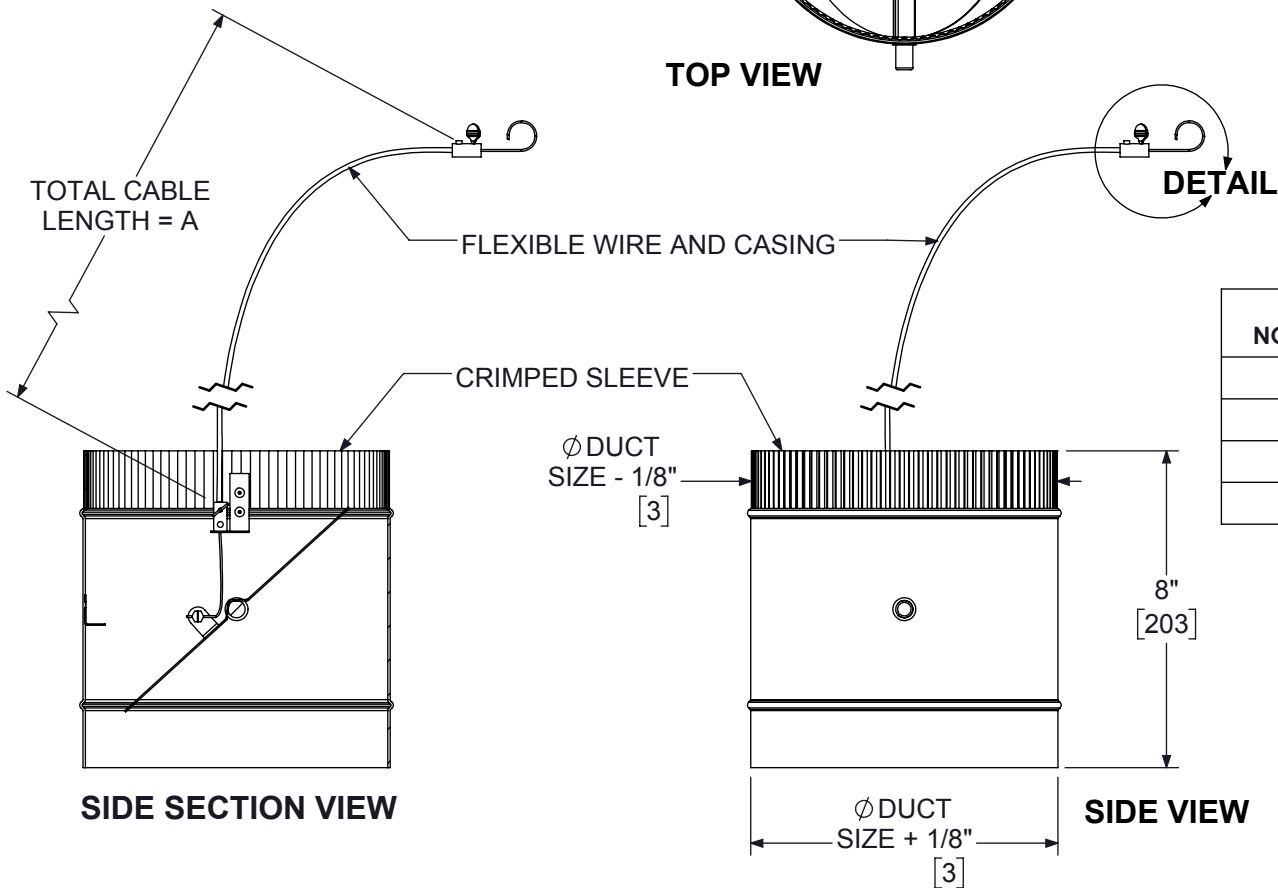
## COD

### CABLE OPERATED DAMPER ROUND CONSTRUCTION

## SUBMITTAL SHEET



A - AVAILABLE CABLE LENGTHS
36" [914]
48" [1219]
60" [1524]
72" [1829]
84" [2134]
96" [2438]



AVAILABLE NOMINAL SIZES
06
08
10
12

#### MATERIAL:

- SHELL CONSTRUCTION IS 24 GA. GALVANIZED STEEL FOR NOMINAL 6" ROUND UNITS AND 20 GA. GALVANIZED STEEL FOR NOMINAL 8" ROUND TO 12" ROUND UNITS.
- SINGLE BLADE WITH "V" FORMED STIFFENER TYPE DAMPER BLADE CONSTRUCTED OF 20 GA. GALVANIZED STEEL.
- DAMPER BLADE IS UNDERSIZED 1/4" FROM SHELL DIMENSIONS. MAY RESULT IN LACK OF AIRTIGHT SEAL EVEN WHEN FULLY CLOSED.
- CABLE OPERATED SHAFT IS 1/2" PLATED STEEL.
- DIMENSIONS ARE SHOWN AS INCHES [MM] UNLESS NOTED OTHERWISE.

#### NOTES:

- DAMPER SHIPS SEPARATELY FOR FIELD MOUNTING.
- STANDARD MILL FINISH.
- CABLE OPERATOR EXITS CRIMPED END OF SLEEVE FOR STANDARD ROUND CONSTRUCTION COD ONLY. DIRECTION CAN BE SWITCHED UPON REQUEST. CONTACT FACTORY.
- DAMPER BLADE WILL PROTRUDE FROM TOP AND BOTTOM OF 8" SHELL FOR 10" AND 12" ROUND NECK SIZES WHEN FULLY OPEN.