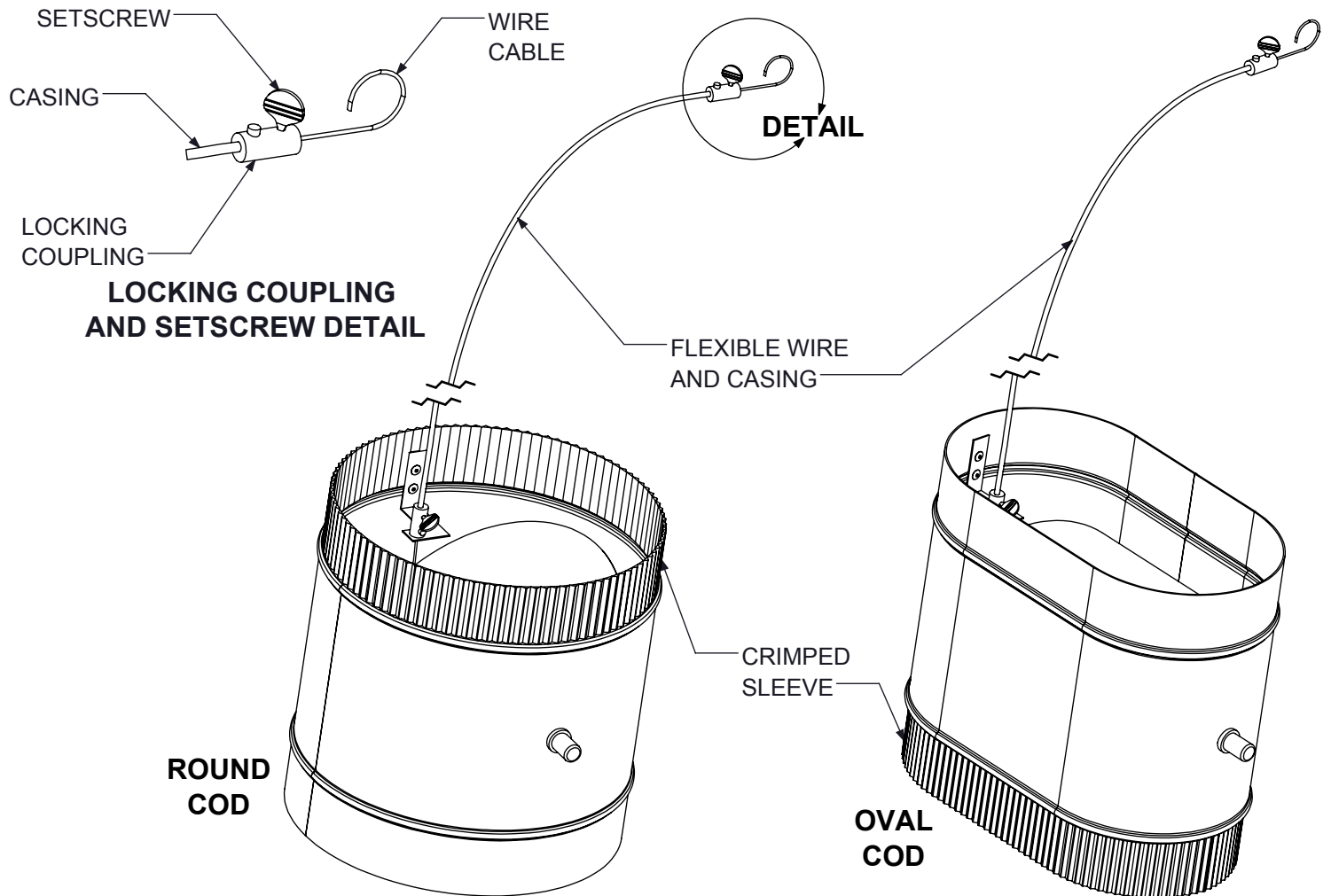


COD

CABLE OPERATED DAMPER INSTALLATION AND OPERATION



WIRE CABLE AND SETSCREW OPERATION:

1. TWIST SETSCREW TO LOOSEN WIRE CABLE WITHIN LOCKING COUPLING.
2. PUSH / PULL WIRE CABLE TO CHANGE DAMPER POSITION UNTIL DESIRED AIRFLOW IS ACHIEVED.
3. TWIST SETSCREW TO TIGHTENED WIRE CABLE WITHIN LOCKING COUPLING AND HOLD DAMPER POSITION.
4. WIRE CABLE CAN BE RELOCATED OUT OF SIGHT INSIDE LINEAR SLOT DIFFUSER OR ROUND NECK DIFFUSER OR GRILLE.

ROUND COD INSTALLATION AND OPERATION:

- DAMPER TO BE INCORPORATED INTO DUCTING UPSTREAM OF ROUND NECK DIFFUSER OR GRILLE. ALL NECESSARY MOUNTING HARDWARE IS BY OTHERS.
- CABLE OPERATOR AND SETSCREW TO BE ACCESSIBLE THROUGH FACE OF ROUND NECK DIFFUSER/GRILLE.
- KRUEGER RECOMMENDS PURCHASE OF ADHESIVE BACKED CLIP (BY OTHERS) TO RETAIN CABLE WITHIN BACKPAN OF DIFFUSER WHILE NOT IN USE.
- CABLE OPERATOR EXITS CRIMPED END OF SLEEVE FOR STANDARD ROUND CONSTRUCTION COD ONLY. DIRECTION CAN BE SWITCHED UPON REQUEST. CONTACT FACTORY.

OVAL COD INSTALLATION AND OPERATION:

- OVAL DAMPER TO SLIP OVER COLLAR OF OVAL INLET OF PLENUM AND SECURED VIA SHEET METAL SCREWS (BY OTHERS).
- CABLE OPERATOR AND SETSCREW TO BE ACCESSIBLE THROUGH FACE OF LINEAR SLOT DIFFUSER.
- KRUEGER RECOMMENDS PURCHASE OF ADHESIVE BACKED CLIP (BY OTHERS) TO RETAIN CABLE WITHIN LINEAR SLOT WHILE NOT IN USE.
- CABLE OPERATOR EXITS STRAIGHT (UNCRIMPED) END OF SLEEVE FOR STANDARD OVAL CONSTRUCTION COD ONLY. DIRECTION CAN BE SWITCHED UPON REQUEST. CONTACT FACTORY.