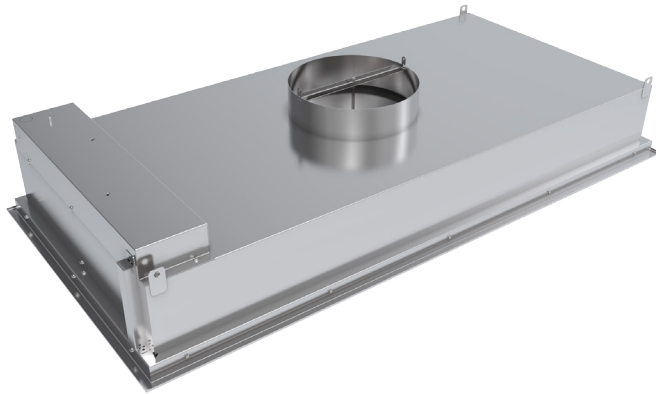




5100 shown with LED light option.



## INTRODUCTION

The Krueger 5100 series of diffusers are the next generation low velocity, non-aspirating, unidirectional flow diffusers for critical environments. Designed to comply with industry standard ASHRAE 170, the 5100 series is commonly used in operating rooms as the primary diffuser array providing a clean piston of air over the patient during surgical procedures.

The 5100 series creates a low velocity, evenly distributed, downward moving “piston” of conditioned air. Unidirectional flow minimizes air induction, reducing the opportunity for air borne pathogens to be re-entrained and pollute the clean discharge air. Installed over the operating table in a hospital operating room, these diffusers help protect the patient from contaminated room secondary air. The only appreciable amount of room air entrainment occurs at the boundaries of the moving air mass, outside the confines of the operating table. As a result, the patient is effectively isolated from residual room air.

The advantages of laminar flow technology provide similar benefits in other clean room applications, such as research laboratories, animal laboratories, food processing plants, pharmaceutical laboratories and protective environment rooms.

## MODEL

**5100** - Laminar Flow Panel; Aluminum and Stainless Steel Construction

## FEATURES

- Low velocity, non-aspirating
- Fully welded plenum body and diffuser face
- Quick opening (1/4 turn) fasteners permit complete removal of the face
- Built-in, face accessible, adjustable trim disk for even air distribution and field balancing
- Safety cables (2) prevent accidental dropping of face
- 13% free area perforated face is standard, larger free area perforated faces are available for larger capacity units
- Frame Styles: Surface mount (F22) and lay-in T-bar (F23) for 1.00” and 1.50” tee widths
- Integral earthquake hanger tabs
- Optional integral LED lights
- Standard finish depends on ordered options; optional finish is Antimicrobial White