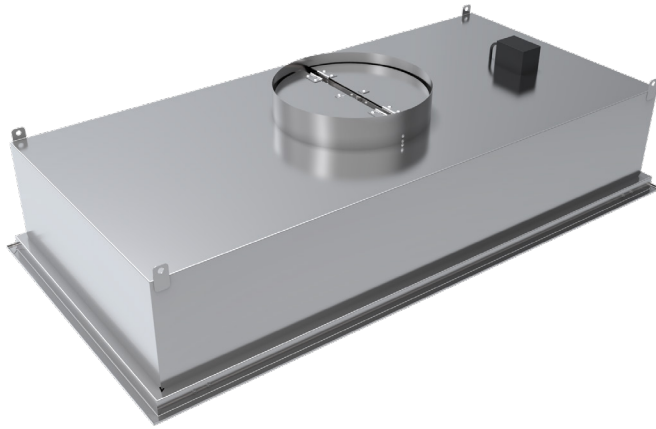


5100HF

Laminar Flow Diffuser | Enhanced | HEPA Filter



5100HF shown with LED light option.



INTRODUCTION

The 5100HF series of laminar diffusers is a convenient critical room solution, as each unit is ASHRAE 170 compliant and comes with a HEPA/ULPA filter that is ready for field installation.

These units work by delivering a low velocity, non-aspirating, unidirectional flow of clean supply air into the space. This airflow pattern minimizes room air induction, which reduces the opportunity for air borne pathogens to be re-entrained and pollute the critical space. For this reason, they are commonly used in operating rooms as the primary diffuser array, where they provide a clean piston of air over the patient during surgical procedures.

Outside of the critical space, the only appreciable amount of room air entrainment occurs at the boundaries of the moving air mass, which are located outside the confines of the critical space (ie: operating table). As a result, the patient is effectively isolated from residual room air.

The advantages of laminar flow technology provide similar benefits in other clean room applications, such as research laboratories, animal laboratories, food processing plants, pharmaceutical laboratories and protective environment rooms.

MODEL

5100HF - Laminar Flow Panel with Gel Seal HEPA/ULPA Filter and Filter Brackets, Aluminum and Stainless Steel Construction

5FILTER - HEPA or ULPA filter for 5100HF (Order as a spare or replacement part only.)

FEATURES

- Low velocity, non-aspirating
- Fully welded plenum body and diffuser face
- HEPA (optional ULPA) filter with room-side filter access
- Quick opening (1/4 turn) fasteners allow face removal
- Built-in, face accessible, adjustable trim disk for even air distribution and field balancing
- Safety cables (2) prevent accidental dropping of face
- 13% free area perforated face is standard, larger free area perforated faces are available for larger capacity units
- Frame Styles: Surface mount (F22) and lay-in T-bar (F23) for 1.00" and 1.50" tee widths
- Integral earthquake hanger tabs
- Optional room-side accessible cable operated damper
- Optional integral LED lights
- Standard finish depends on ordered options; optional finish is Antimicrobial White