

MODEL

- SHRPLQ - Steel, plaque ceiling diffuser with slots

FEATURES

- Available in 1, 2, or 3 slots
- Core is removable from face of diffuser
- Round duct connections
- Excellent choice for variable air volume systems

INLET SIZES

- Round: 6" - 14" (2" increments)

FRAME STYLES

- F23 - Lay-in T-bar
- F98 - 5/16" step down

PANEL SIZES

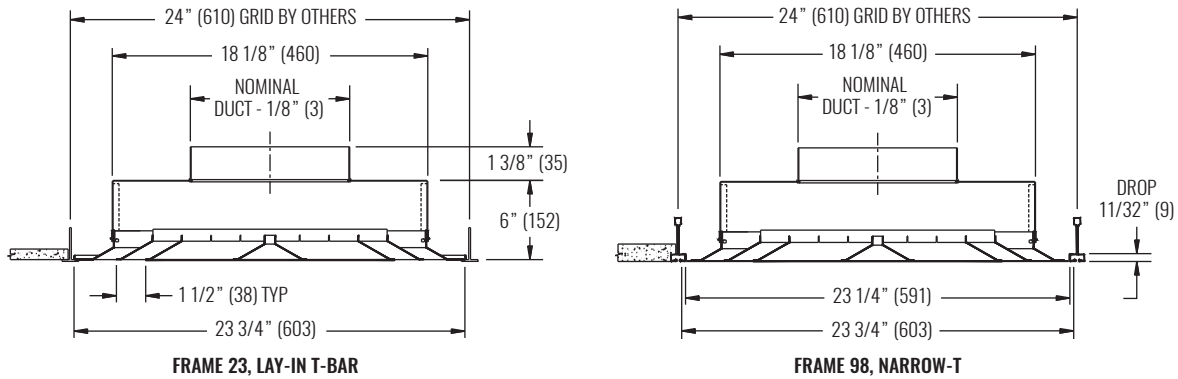
- 24"x24"

COMPATIBLE OPTIONS AND ACCESSORIES

- PR10 - Steel, radial opposed blade damper
- PRN100 - Steel, radial fan damper
- RP12 - Steel, butterfly bladed damper
- PRD10 - Steel, radial opposed blade damper (duct mount)
- PRD100 - Steel, radial fan damper (duct mount)
- PR12 - Steel, butterfly bladed damper (duct mount)
- RSG15 - Steel, round straightening grid (duct mount)
- PRSG15 - Steel, round straightening grid
- OBDDM - Steel, square or rectangular damper (duct mount)
- EX8 - Steel duct extractor with 1" blade spacing (duct mount)
- EX88 - Steel duct extractor with 2" blade spacing (duct mount)
- HCF23 - Steel, hard ceiling frame (F23 only)
- 5HCF23 - Aluminum, hard ceiling frame (F23 only)



DIMENSIONAL DATA



NOTES: Dimensions in parentheses are millimeters (mm).

PERFORMANCE AND DESIGN DATA

SIZE		PERFORMANCE - HORIZONTAL THROW				DESIGN		
PANEL	NOMINAL INLET	NC (< 25)		NC (25 - 40)		CFM @ NC=30	SPACING @ 0.6 CFM/sf (ft)	MINIMUM CFM/sf
		CFM	THROW (ft)	CFM	THROW (ft)			
1-SLOT								
24"x24"	6"	39 - 147	3 - 10	160 - 255	11 - 15	190	18	0.40
	8"	70 - 200	5 - 13	209 - 349	13 - 17	250	20	0.40
	10"	55 - 250	4 - 15	259 - 464	15 - 20	310	23	0.45
2-SLOT								
24"x24"	6"	78 - 205	4 - 10	220 - 365	11 - 18	250	20	0.40
	8"	140 - 280	7 - 13	300 - 489	14 - 20	350	24	0.42
	10"	164 - 350	8 - 17	380 - 610	18 - 23	440	27	0.44
	12"	157 - 420	8 - 19	471 - 785	20 - 26	520	29	0.46
3-SLOT								
24"x24"	8"	175 - 340	7 - 13	366 - 600	14 - 23	420	26	0.45
	10"	218 - 418	9 - 16	450 - 718	18 - 25	530	30	0.48
	12"	236 - 500	9 - 20	550 - 942	22 - 28	670	33	0.55
	14"	214 - 605	8 - 23	650 - 1065	23 - 30	750	35	0.55

NOTES: Information shown is abbreviated. See website for complete information. Dimensions in parentheses are millimeters (mm). Throw value ranges are given for isothermal conditions, unless otherwise noted, and a terminal velocity of 50 FPM (0.25 m/s). NC ranges are based on octave band 2 - 7 sound power levels minus a room absorption of 10dB, re 10⁻¹² Watts. Data was obtained from tests conducted in accordance with ANSI/ASHRAE Standard 70, ISO Standard 5219, and ISO Standard 3741. Design spacing is recommended distance between diffusers in an open plan office based on ADPI > 80%, 9ft ceiling, and 55°F discharge at 30 NC and 0.6 CFM/sf. Minimum CFM/sf is based on recommended spacing at 80% ADPI. Design recommendations not applicable to vertical throw. "N/A" in design table denotes situations which do not result in ADPI>80% and are therefore not recommended.