

MODEL

- 7000 - Aluminum, combination supply/return ceiling diffuser

FEATURES

- Provides quick single point air distribution for rooftop air conditioning packages
- Egg crate frame is removable for ease of cleaning
- Anti-sweat gasket
- Supply slots are constructed of aluminum extrusions with staked corner chevrons
- Center return air section is 1/2" square aluminum egg crate, clipped in place
- Factory mounted insulated plenum with mounting supports and turning vane

INLET SIZES¹

- Round: 16", 18"
- Square: 18"x28", 18"x36", 48"x24", 24"x54"

FRAME STYLES

- F23 - Lay-in T-bar
- F98 - 5/16" step down

PANEL SIZES

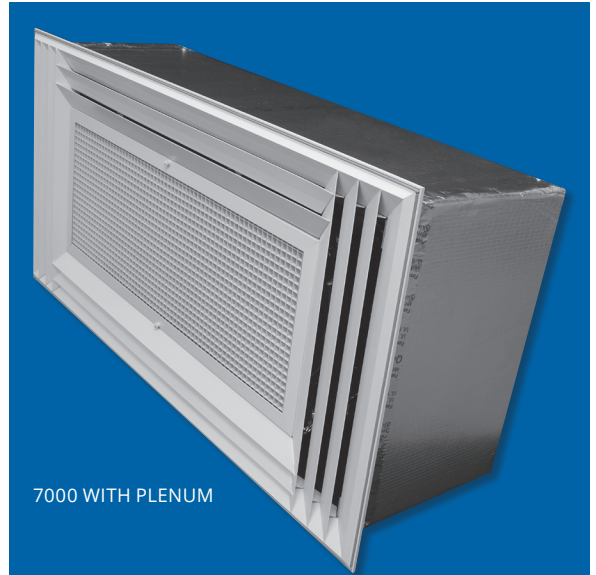
- 48"x24"
- 48"x36"
- 48"x48"
- 60"x60"

COMPATIBLE OPTIONS AND ACCESSORIES

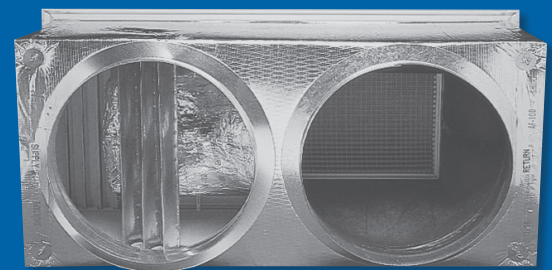
- OBDDM - Steel, square or rectangular damper (duct mount)
- HCF23 - Steel, hard ceiling frame (F23 only)
- 5HCF23 - Aluminum, hard ceiling frame (F23 only)

NOTES:

- ¹ Inlet option depends on panel size.



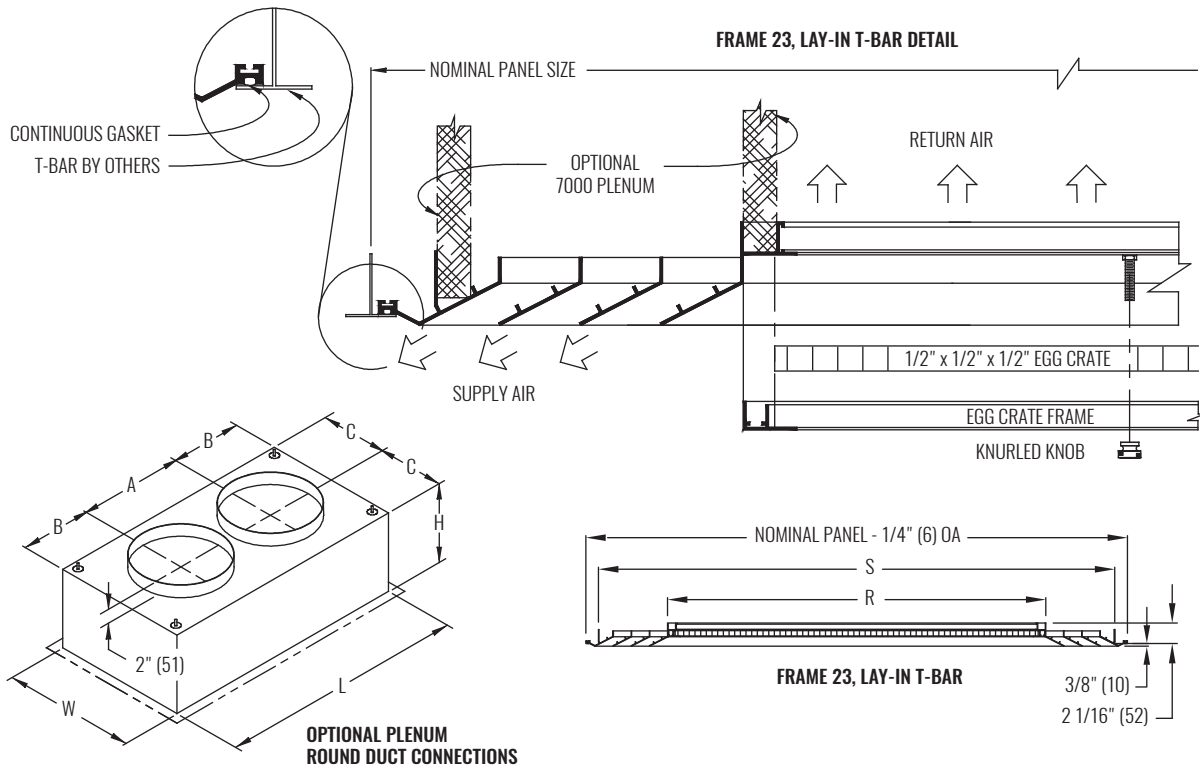
7000 WITH PLENUM



OPTIONAL ROUND PLENUM



DIMENSIONAL DATA



NOTES: Dimensions in parentheses are millimeters (mm). 'OA' is overall length. See table below for dimensional references.

PERFORMANCE AND DIMENSIONAL DATA

SIZE		PERFORMANCE - HORIZONTAL THROW				DIMENSIONS							
PANEL	NOMINAL INLET	NC (< 25)		NC (25 - 40)		L	W	H	A	B	C	S	R
		CFM	THROW (ft)	CFM	THROW (ft)								
48"x24"	16" ROUND	279 - 977	5 - 18	1070 - 1953	19 - 25	45" (1143)	21" (533)	13 1/2" (343)	22 1/2" (572)	11 1/4" (286)	10 1/2" (522)	21"x45" (533x1143)	11 5/8"x33" (295x838)
	18" ROUND	353 - 1130	6 - 19	1271 - 2472	20 - 28	45" (1143)	21" (533)	13 1/2" (343)	22 1/2" (572)	11 1/4" (286)	10 1/2" (522)	21"x45" (533x1143)	11 5/8"x33" (295x838)
36"x48"	18"x28"	700 - 1700	8 - 22	1850 - 3570	23 - 33							33"x45" (838x1143)	19"x33" (483x838)
48"x48"	18"x36"	900 - 1993	9 - 24	2186 - 4050	25 - 35							45"x45" (1143x1143)	33"x33" (838x838)
60"x60"	48"x24"	800 - 2960	3 - 27	3120 - 5920	28 - 43							57"x57" (1448x1448)	45"x45" (1143x1143)
	24"x54"	938 - 3239	3 - 27	3410 - 6563	28 - 45							57"x57" (1448x1448)	45"x45" (1143x1143)

NOTES: Information shown is abbreviated. See website for complete information. Dimensions in parentheses are millimeters (mm). Throw value ranges are given for isothermal conditions, unless otherwise noted, and a terminal velocity of 50 FPM (0.25 m/s). NC ranges are based on octave band 2 - 7 sound power levels minus a room absorption of 10dB, re 10⁻¹² Watts. Data was obtained from tests conducted in accordance with ANSI/ASHRAE Standard 70, ISO Standard 5219, and ISO Standard 3741.

© Copyright Krueger 2018